

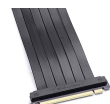
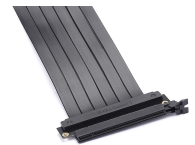


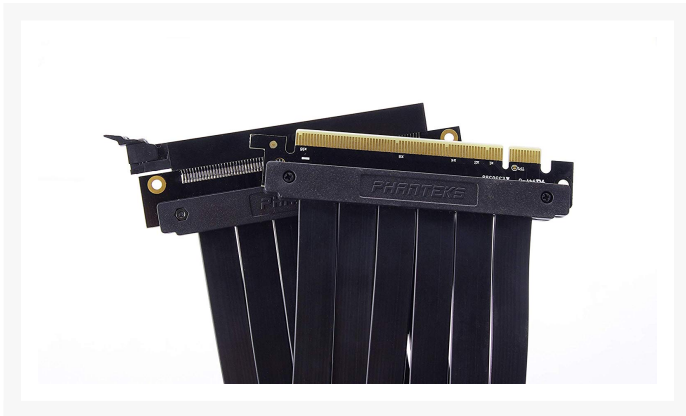
PHANTEKS

Phanteks PH-CBRS_FL30 – 300mm Pci-E X16 Riser Cable 180 Degree Adapter, Slim Design, EMI Shielded, Compatible with Enthoo Elite Chassis

\$29.99

Product Images





Short Description

This 30 cm long riser cable from *PHANTEKS* allows the PCI-Express x16 slot on a motherboard to be relocated elsewhere, or even positioned outside of the case entirely. This could make sense in scenarios where you need to swap in- and out GPUs on a regular basis to prevent the board's slot from getting damaged, or simply want more free space for expansion cards.

Description

This 30 cm long riser cable from *PHANTEKS* allows the PCI-Express x16 slot on a motherboard to be relocated elsewhere, or even positioned outside of the case entirely. This could make sense in scenarios where you need to swap in- and out GPUs on a regular basis to prevent the board's slot from getting damaged, or simply want more free space for expansion cards.

Even modding projects where cases may not strictly adhere to the common ATX form-factor may benefit from this riser cable, or perhaps where users wish to place a PCI-Express expansion card in an unusual location. With the *PH-CBRS-FL30* for example, a vertically mounted graphics card can be connected to the motherboard in a chassis that is already equipped with a vertical PCI expansion slot at the factory. The 180-degree riser cable connects the PCIe slot directly to the contacts. This allows the card's cooler to show its full

potential.

Specifications

Cable type	extension
Connector 1 (internal)	PCIe (16x) PLUG
Connector 2 (internal)	PCIe (16x) SOCKET
Cable length	more than 230 cm
Cable length (exact)	30 cm
Cable colour	black
Connector colour	black
Cable sleeved	no
Standard / Spezifikation	PCIe 1.0, PCIe 2.0, PCIe 3.0

Additional Information

Brand	Phanteks
SKU	PH-CBRS-FL30
Weight	0.2500
Color	Black
Cable Type	PCI-E 16X Riser Ribbon Extender
Length	300mm
Vendor SKU/EAN	886523001478

