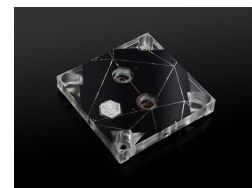




Bitspower Touchaqua CPU Block Summit MS (Intel) -Digital RGB

\$75.99

Product Images



Short Description

Part of the Summit series, the MS CPU water block brings a unique style to your PC with a stylish top plate design and bright Digital RGB LED lighting, without compromising on efficiency. Compatible with Z370 (LGA 1151 socket) and X299 (LGA 2066 socket), the Summit MS is fabricated with the same high-quality materials and precise craftsmanship the users came to expect from Bitspower.

Description

Part of the Summit series, the MS CPU water block brings a unique style to your PC with a stylish top plate design and bright Digital RGB LED lighting, without compromising on efficiency. Compatible with Z370 (LGA 1151 socket) and X299 (LGA 2066 socket), the Summit MS is fabricated with the same high-quality materials and precise craftsmanship the users came to expect from Bitspower.

Features

1. Brings a unique style to your PC with a stylish top plate design
2. Fantasy light can be changed as you want.
3. Block top cover made by hi-quality acrylic.
4. Block base made by hi-quality copper C1100.
5. RoHS compliant.

Specifications

- Block top color : Black
- Brackets color : Silver
- LED color: Digital RGB
- Thread : G1/4" x 2
- Dimension (LxWxH) : 95 x95 x31.9 mm

LED Strip Management By Bitspower Digital RGB And Certified By ASUS AURA Sync, GIGABYTE RGB Fusion, MSI Mystic Light Sync, ASRock Polychrome and Razer Chroma

Compatibility :

1. Intel LGA 775 / 1156 / 1155 / 1150 / 1151
2. Intel LGA 2011 / 2011-v3
3. Intel LGA 2066

Included :

- 1Set of mounting screw
- 1Set of mounting spring
- 1Pcs of CPU backplate

Attention: Bitspower recommends the use of purified water for the loop.

Bitspower reserves the right to change the product design and interpretations. These are subject to change without notice. Product colors and accessories are based on the actual product.

Additional Information

Brand	Bitspower
SKU	BPTA-CPUMS-DRGB
Weight	2.0000
Color	Black
Block CPU Type	Intel
Block Style	Copper-Plexi
Vendor SKU/EAN	4712914781604

