

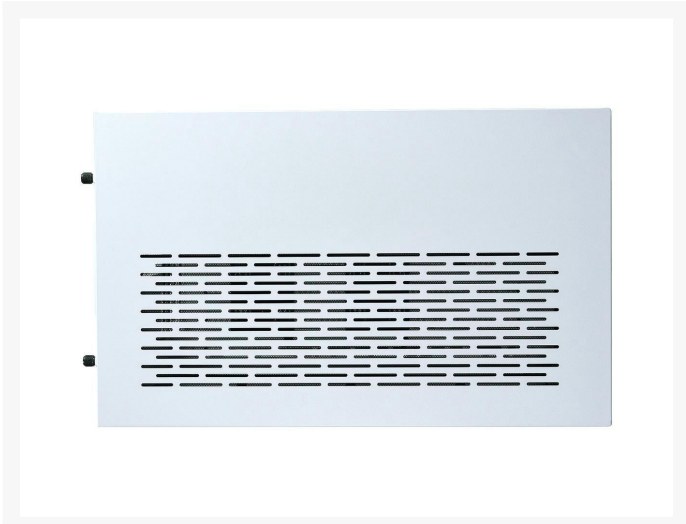
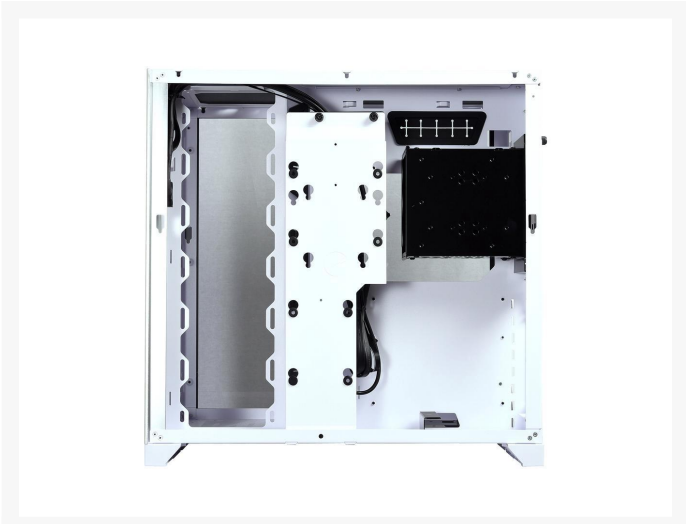


# Lian Li PC-O11DX 011 Dynamic Tempered Glass on The Front Chassis Body SECC ATX Mid Tower Gaming Computer Case - White

\$139.99

## Product Images





## Short Description

---

The O11 DYNAMIC is the combination of modern design and art. Through years of researching, collecting feedback and redesigning; We have successfully craft the best edition of the dual chamber chassis.

## Description

---

The O11 DYNAMIC is the combination of modern design and art. Through years of researching, collecting feedback and redesigning; We have successfully craft the best edition of the dual chamber chassis.

## Features

---

- Display your hardware like Modern Architecture

Experience the full view seamless front and side tempered glasses like a show room.

- USB 3.1 Type-C, Test the limit of transferring Speed  
Type-C(USB 3.1) 1280MB/S
- Patent Designed Glass Mounting Mechanism  
The two bolt on the steel pieces adhering on the glass secure the panel with ease.
- The potential of housing Multiple Radiators  
Top/Bottom/Side can be mounted for up to three 360 Radiators without interference
- Dual PSUs Capability for efficiency  
The drive caddy can be swapped for second PSUs or can be switched to the lower position.
- Extended Compatibility for extreme usage  
MINI-ITX/M-ATX/ATX/E-ATX Motherboard, no limit, no interference
- The Combination of the glass and aluminum,  
Wide front glass combines with brush aluminum in proper proportion.
- Double Layer Cable Management Design  
The angled motherboard tray and the back side cable management bar conceal the and exclude any cable mess.
- 6 Hard Drive Capability  
Support up to 6 SSD, and 3 HDD
- 4 x Dust Filter, Complete Dust Protection  
Bottom/top/ Side panels are all equipped with magnetic dust filters to prevent any dust infiltration.
- 0.8mm SECC, Sturdy Build Construction  
The Chassis' body Structure is made out of 0.8mm thick SECC; Offer Sturdy and Strong Foundation.

## Specifications

---

Brand

LIAN LI

Model

PC-O11DW

## Details

Type

ATX Mid Tower

Color

White

#### Case Material

Tempered glass on the front ,and left sides .Chassis body SECC

#### With Power Supply

No

#### Power Supply Mounted

Rear

#### Motherboard Compatibility

Micro ATX / ATX / E-ATX

#### Side Panel Window

Yes

## Expansion

#### Internal 3.5" Drive Bays

2 x 3.5" drive bay or 6 x 2.5"

#### Expansion Slots

8

## Front Panel Ports

#### Front Ports

2 x USB 3.0 / 1 x USB 3.1 Type-C / HD Audio

## Cooling System

#### Fan Options

Top: 3 x 120mm or 2 x 140mm fan

Middle: 3 x 120mm fan

Bottom: 3 x 120mm fan

#### Radiator Options

120x 360mm / 120x 240mm / 140x 280mm

## Dimensions & Weight

#### Max GPU Length Allowance

420 mm

#### Max CPU Cooler Height Allowance

155 mm

Max PSU Length  
255 mm

Dimensions (H x W x D)  
17.70" x 10.80" x 17.70"

Weight  
21.10 lbs.

## Additional Information

---

Brand	Lian-Li
SKU	PC-O11DW
Weight	32.0000
Color	White
Chassis Form Factor	Mid-Tower
Side Panel	Window
Material	Steel
PSU Wattage	No PSU

