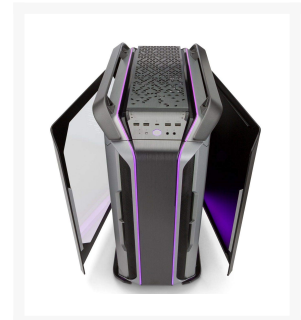




Cooler Master Cosmos C700M Computer Case - Siler/Gray/Black

\$479.99

Product Images







Short Description

Boasting a curved tempered-glass side panel, addressable RGB lighting, and four included cooling fans, the Cosmos C700M Full Tower Case from Cooler Master is built with a steel frame and supports E-ATX, ATX, Micro-ATX, and Mini-ITX motherboards.

The C700M packs in eight expansion slots, a 5.25" drive bay, and four 3.5"/2.5" drive bays. I/O options include a single USB-C 3.1 Gen 2 port, four USB 3.0/USB 3.1 Gen 1 ports, a combo audio jack, and a dedicated microphone jack. The C700M also comes with four 140mm fans plus support for a liquid cooling system, as well as the option to mount your graphics card vertically or horizontal.

Description

Boasting a curved tempered-glass side panel, addressable RGB lighting, and four included cooling fans, the Cosmos C700M Full Tower Case from Cooler Master is built with a steel frame and supports E-ATX, ATX, Micro-ATX, and Mini-ITX motherboards.

The C700M packs in eight expansion slots, a 5.25" drive bay, and four 3.5"/2.5" drive bays. I/O options include a single USB-C 3.1 Gen 2 port, four USB 3.0/USB 3.1 Gen 1 ports, a combo audio jack, and a dedicated microphone jack. The C700M also comes with four 140mm fans plus support for a liquid cooling system, as well as the option to mount your graphics card vertically or horizontal.



Make It Yours.

RAISING THE BAR(S)

COSMOS C700M



Cosmos C700M

Raising The Bar(s)

The Cosmos series is known for pushing the limits of Cooler Master's case technology. The freedom in layout organization and the support for unique graphics card mounting make custom building accessible right out of the box.

Since the chassis is only as complex as builders need it to be, there will always be room to creatively experiment. The COSMCosmos OS frame allows for sandbox-level versatility.

- Highly Versatile Layout
- Graphics Card Mounting with Riser Cable
- ARGB Lighting
- Extensive Cable Cover System
- Versatile Liquid Cooling Support
- Aluminum Panels & Handles
- Dual Curved Tempered Glass Side Panel
- Rich Connectivity



Make It Yours.

We're all about the things that make building a PC such a rewarding experience. The sense of achievement. The joy of making and creating something uniquely yours in form and function and, of course, the thrill of bringing your creation to life without melting your components.

Features



ARGB Lighting

Two parallel strips of addressable RGB lighting run continuously from the top panel to the front panel, with ambient ARGB lighting on the bottom that reflects against the aluminum bars.



Rich Connectivity

The advanced I/O panel comes with a 4-Pole headset jack (audio+mic), USB 3.1 (Gen 2) Type-C port, four additional USB 3.0 ports, PWM fan speed button, and an addressable RGB control button.



Dual Curved Tempered Glass Side Panel

A panoramic tempered glass side panel, with two curved edges, offer a wide view of the system build.



Versatile Liquid Cooling Support

A flat radiator bracket design offers more versatility for liquid cooling with the ability to be mounted on the top, front, or bottom of the frame. The two included brackets can each support a 420mm radiator, with the ability to mount fans and a radiator on either side of the bracket.

Features

Multiple Layout Options

The C700M's frame design and multi-functional brackets support a conventional, chimney, inverse layout, or a fully customized layout.

Addressable RGB Lighting

Two parallel strips of addressable RGB lighting run continuously from the top panel to the front panel, with ambient ARGB lighting on the bottom that reflects against the aluminum bars.

Curved Tempered Glass Side Panel

A tempered glass side panel with two curved edges offers a wide view of the system build.

Graphics Card Mounting with Riser Cable

The graphics card bracket can be mounted vertically or horizontally on either the PSU midplate or on the M. Port, a modular mounting system that expands mounting options for hardware and brackets. The bracket can be rotated from 0 to 90°. Also included is a 400mm riser cable for connecting a vertically mounted graphics card to the motherboard.

USB and I/O Options

The C700M's I/O panel comes with a USB 3.1 Gen 2 Type-C port, which supports data transfers up to 10 Gb/s, plus four USB 3.1 Gen 1/3.0 ports (USB 3.1 Gen 1 and USB 3.0 are synonymous), which each offer a maximum throughput of 5 Gb/s. Also included is a four-pole combo audio jack, a dedicated mic jack, a PWM (pulse-width modulation) fan speed button, and an addressable RGB control button.

Cable Cover System

The three included covers can be placed on either the M. Port or on the mid-plate, with the ability to mount SSD storage or a reservoir.

Aluminum Panels and Handles

Brushed aluminum spans the top panel and front panel, with cast aluminum handles and feet that provide protection and support for carrying the case.

Liquid Cooling Support

A flat radiator bracket design lets you mount liquid cooling on the top, front, or bottom of the frame. The two included brackets can each support a 420mm radiator, with the ability to mount fans and a radiator on either side of the bracket.

Specifications

Cooler Master Cosmos C700M Specs

Compatibility

Motherboard Support	ATX, E-ATX, Micro-ATX, Mini-ITX
External Drive Bays	1 x 5.25"
Internal Drive Bays	4 x 2.5/3.5"
Additional Drive Mounting	1 x 2.5/3.5" (Motherboard Tray)
Expansion Slots	8 x Full Height
Maximum GPU Length	19.29" / 490 mm
CPU Cooler Height	7.80" / 198 mm

Cooling

Fan Mounting (Front)	3 x 120 mm Or 3 x 140 mm
Fan Mounting (Rear)	1 x 120 mm Or 1 x 140 mm
Fan Mounting (Side)	<i>None</i>
Fan Mounting (Top)	3 x 120 mm Or 3 x 140 mm
Fan Mounting (Bottom)	2 x 120 mm Or 2 x 120 mm
Fans Included (Front)	3 x 140 mm (1200 rpm)
Fans Included (Rear)	1 x 140 mm (1200 rpm)
Maximum Radiator Size (Front)	420 mm
Maximum Radiator Size (Rear)	140 mm
Maximum Radiator Size (Top)	420 mm
Maximum Radiator Size (Bottom)	240 mm
Fan Mounting (Internal)	<i>None</i>
Fans Included (Internal)	<i>None</i>

I/O

Connections	4 x USB Type-A (USB 3.1 / USB 3.2 Gen 1) 1 x USB Type-C (USB 3.1 / USB 3.2 Gen 2)
Audio Connections	1 x 3.5 mm Input 1 x 3.5 mm Output
Display Connections	<i>None</i>
Physical	
Windowed Panel	Yes
Material	Steel
Built-In Lighting	Yes
Security	<i>None</i>
Dimensions (W x H x D)	12 x 25.6 x 25.6" / 304.8 x 650.24 x 650.24 mm
Packaging Info	
Package Weight	62.5 lb
Box Dimensions (LxWxH)	29.75 x 29.25 x 16.25"

Additional Information

Brand	Cooler Master
SKU	MCC-C700M-MG5N-S00
Weight	75.0000
Color	Black/Silver
Chassis Form Factor	Full Tower
Side Panel	Window
Motherboard Support	ATX, E-ATX, Micro ATX, Mini ITX
Material	Aluminum/Steel
PSU Wattage	No PSU
Vendor SKU/EAN	4719512075036

