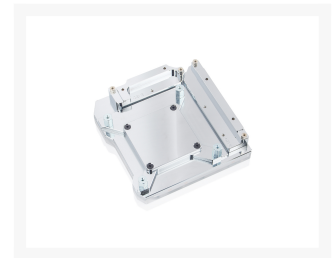
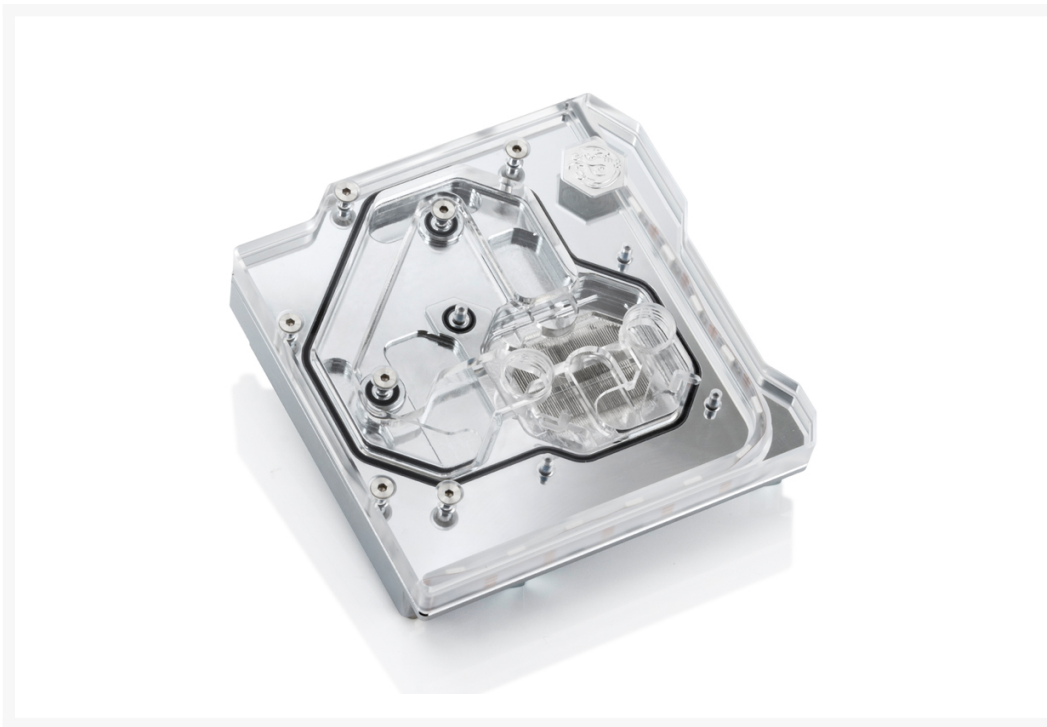




Bitspower Mono Block for ROG Maximus XI Gene

\$155.95

Product Images



Short Description

The most important components of your motherboards deserve to receive the best heat management possible, which is why Bitspower expertly designed the Intel Z390 series mono block to simultaneously cool the CPU and VRMs. Featuring a direct water injection design, the CPU is firstly chilled with the coldest water, then the liquid is redirected over the VRMs, keeping everything at a low temperature for maximum performance.

Description

Bitspower Mono Block for ROG Maximus XI Gene

The most important components of your motherboards deserve to receive the best heat management possible, which is why Bitspower expertly designed the Intel Z390 series mono block to simultaneously cool the CPU and VRMs. Featuring a direct water injection design, the CPU is firstly chilled with the coldest water, then the liquid is redirected over the VRMs, keeping everything at a low temperature for maximum performance.

Made of clear acrylic, the top layer of the mono block offers not only an efficient water channel design, but also a unique look to complement your PC style, while the base layer is made of high quality copper and molded to tightly fit over the CPU and VRMs, offering the best heat transfer possible. Additionally, the Bitspower Intel Z390 series mono block is equipped with Bitspower Digital RGB LEDs, the Z390 series mono block is sure to become the center piece of your rig with its easy to control light effects.

Features

1. Block TOP Cover Made of Hi-Quality Acrylic.
2. Block Base Made of Hi-Quality C1100 Copper.
3. Block Base with High Durability Nickel Finished in Silver.
4. RoHS Compliant.

Specifications

- Thread : G1/4" x 2
- Dimension (LxWxH) : 115 x118 x27.6 mm
- LED Color : Digital RGB

LED Strip Management By Bitspower Digital RGB And Certified By ASUS AURA Sync, GIGABYTE RGB Fusion, MSI Mystic Light Sync, ASRock Polychrome and Razer Chroma

Included :

- 1 set of BP-MBASMIG
- 1 set of Thermal PAD
- 1 set of Mounting Screws/Accessories.

Compatibility :

- ROG Maximus XI Gene

*** Bitspower reserves the right to change the product design and interpretations. These are subject to change without notice. Product colors and accessories are based on the actual product. ***

Additional Information

Brand	Bitspower
SKU	BP-MBASMXIG
Weight	1.5000
Color	Clear
Block Style	Nickel-Plexi
Vendor SKU/EAN	4712914782038

