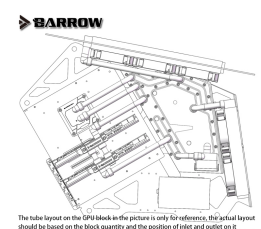
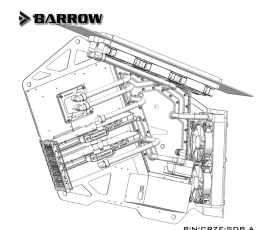
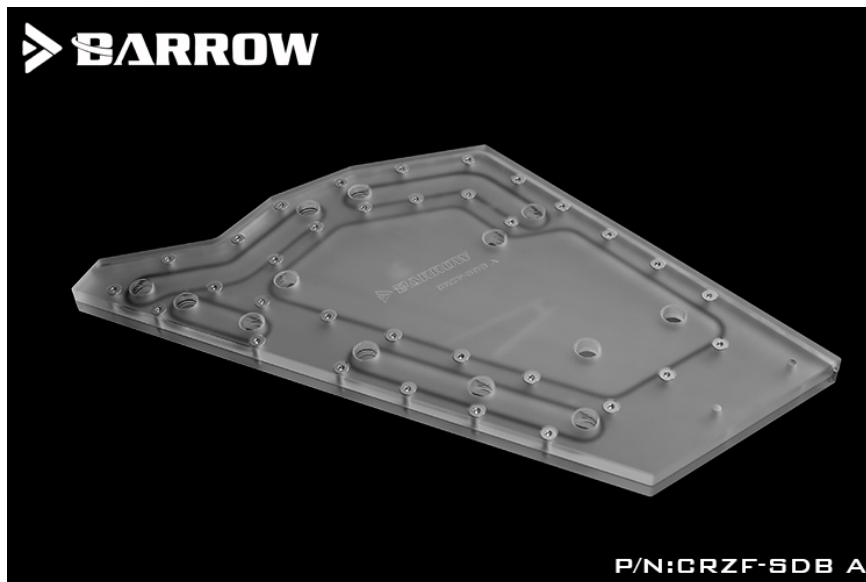




BARROW Barrow LRC2.0 water channel integrated board for COUGAR CONQUEROR open type case

Special Price
\$60.59 was
\$169.95

Product Images



Short Description

This water channel board from Barrow is made out of acrylic and is made specifically for the COUGAR CONQUEROR.

Description

This water channel board from Barrow is made out of acrylic and is made specifically for the COUGAR CONQUEROR.

Please Note: The water channels within these waterway plates may update without notice. Overall demension of waterway will stay the same

Specifications

Compatible CPU block



P/N:LTYK3-04 V2



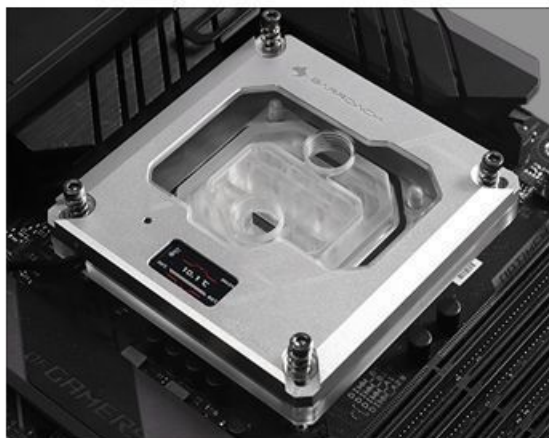
P/N:LTYKB-04N-V2



P/N:LTYKB-ARK



P/N:LTFHB-04N V2



P/N:FBLTFHI-04N V2

Recommending Parts

Name	Model	Quantity
BARROW G1/4" 90°Rotary Adapter (Male to Female)	TWT90-V2.5	9
BARROW Dual G1/4" Adjustable Aqua Link Pipe (22-31MM)	TSSXK-A01	1
BARROW Dual G1/4" Adjustable Aqua Link Pipe (41-69MM)	TSSXK-B01	1
BARROW Compression Fitting - OD: 14mm Rigid Tubing (Smooth)	TLGYKN-14	16
BARROW G1/4 Male to Female Extender - 10mm	TNYZ-G10	1
BARROW G1/4 Male to Female Extender - 20mm	TNYZ-G20	2
BARROW G1/4 Male to Female Extender - 40mm	TNYZ-G40	2
BARROW Multicolor New CD Composite plate Finish Stop Plug Fitting	TLCDDT-V1	2
Barrow Flat push type check valve (Male to Female)	TTLPPFG	1
Barrow 2016 New Manual automatic integrated Exhaust valve	TPQZ-V2	1
Barrow Remote type 8 lines RGB light controller (Aurora)	DK201	1
BARROW Manual controller general 1 points 4 expansion line	ARKZXS1-4	1
Barrow 240MM Double-s series Radiator (Thick:34MM)	DABEL-A 240	1
Barrow 360MM Double-s series Radiator (Thick:34MM)	DABEL-A 360	1
Barrow New Edition Water Cooling Liquid 473ML	SLYS-V2	2
Barrow 14*10 Normal temperature type PETG Tube	PG1410-L	8
BARROW DDC bracket	BTCBJ-DDF	1
Barrow 17W pump metal heat sink kit-PWM control speed type built-in RGB	SPB17-S V2	1
Barrow Aurora RGB adjustable annular lighting effect hydraulic bearing PWM cooling fan	BF03-PR	6
The above list only shows the applicable fittings specifications. Players can purchase other products according to the above product specifications		

COUGAR Waterway plate CRZF-SDB A edition add integrated board compatible:

- ROG RAMPAGE VI EXTREME OMEGA
- ROG RAMPAGE VI EXTREME
- MSI MEG Z390 GODLIKE

The motherboard models that the water channel integrated board compatible with are:

- ROG STRIX Z390-E GAMING
- ROG STRIX Z390-H GAMING
- ROG STRIX Z370-F GAMING
- ROG MAXIMUS X HERO
- ROG MAXIMUS X HERO (WI-FI AC)
- ROG MAXIMUS IX HERO
- ROG STRIX Z370-E GAMING
- ROG STRIX Z370-H GAMING

- ROG STRIX Z370-F GAMING
- ROG STRIX B360-F GAMING
- ROG STRIX Z270F GAMING
- ROG STRIX Z270E GAMING
- ROG STRIX Z270H GAMING
- ROG MAXIMUS XI EXTREME
- ROG MAXIMUS XI GENE
- ROG Maximus XI Hero
- ROG Maximus XI Hero Black Ops
- ROG MAXIMUS VIII EXTREME/ASSEMBLY
- PRIME Z370-A
- PRIME Z390-A
- PRIME Z390-P
- TUF Z390-PRO GAMING
- TUF Z370-PRO GAMING
- MAXIMUS VIII HERO
- MAXIMUS VIII RANGER
- Z170 PRO GAMING
- Z170-AR

We recommend using the above models of motherboards and more compatible motherboards will be updating at any time.

Additional Information

Brand	Barrow
SKU	CRZF-SDB-A
Weight	4.0000
Color	Clear
Reservoir Type	Distribution plate
Vendor SKU/EAN	6937826612985
Special Price	\$60.59

