

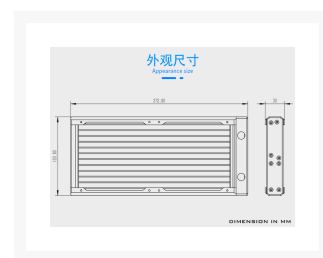


BARROWCH

BARROWCH Chameleon Fish removable 240 radiator with temperature display screen POM Edition - Black

\$72.50

Product Images



Short Description

The Barrowch Chameleon Fish comes in either 120, 240 or 360 lengths. Comes with temperature display screen that can be changed to either side of the radiator. It has a changeable water chamber that can be changed from PMMA to POM or vice versa. You also have the ability to change out the aluminum alloy borders to various colors to match the color scheme of your build.

Description

The Barrowch Chameleon Fish comes in either 120, 240, 360, and 480mm lengths. Comes with temperature display screen that can be changed to either side of the radiator. It has a changeable water chamber that can be changed from PMMA to POM or vice versa. You also have the ability to change out the aluminum alloy borders to various colors to match the color scheme of your build.

Barrow and Barrowch was established in 2010. It is an export-oriented and domestically-manufactured manufacturing enterprise specializing in computer and industrial water cooling equipment and precision hardware components. The advanced design concept and internal structure are deeply loved by domestic and foreign enthusiasts of water cooling players.

- Dual pass radiator designed for computer liquid cooling
- High liquid and air flow design
- Copper fin spacing optimized for high flow fans
- Slim height for easy mounting
- Perfect for all overclocking and silent projects
- Integrated OLED LCD Screen

Features

实时温度检测

Real-time temperature detection

冷排单侧集成OLED显示屏，可实现对冷排整体温度的实时检测



显示随心换

Display can be changed at will

屏幕显示方向可按照冷排实际安装方向，进行按需调整

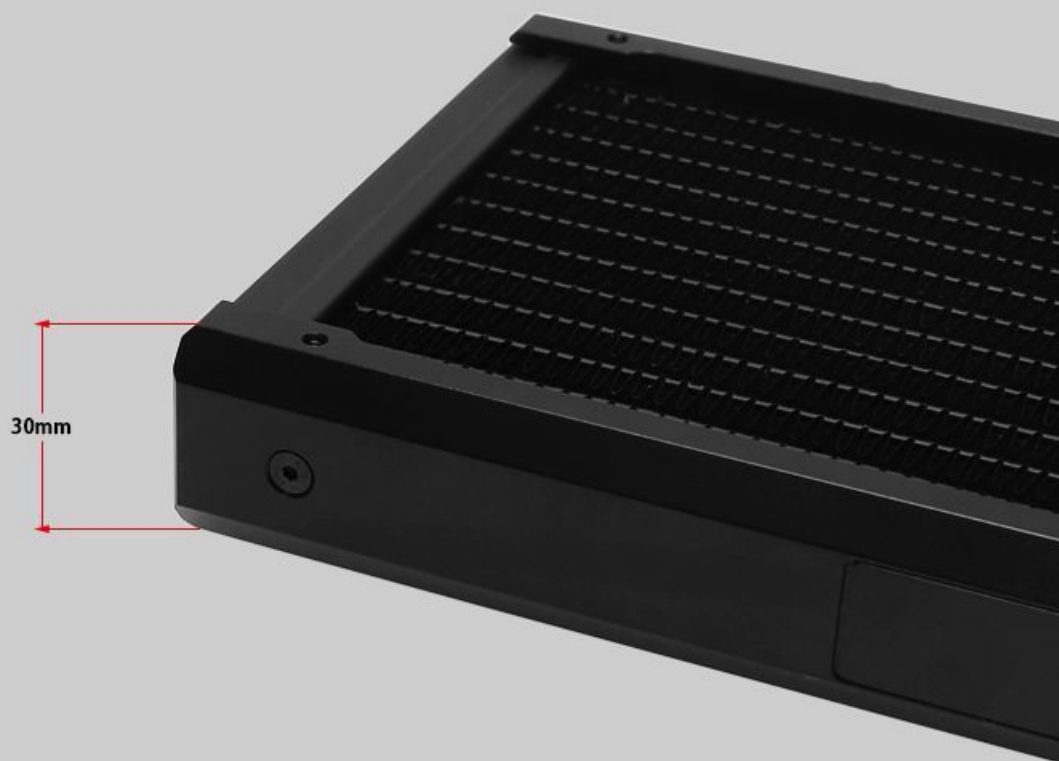


出厂默认显示屏方向，如需更换请按下方教程小心操作

厚度适中 散热强劲

Thickness is moderate, heat dissipation is strong

30MM厚度的黄金比例，性能强劲，可与机箱保持良好的兼容性



散热



降温



通风



黄金比例



美观

水室模块随心换

Water chamber module can be changed at will

冷排水室模块具有PMMA及POM两种不同材质，可按需购买



铝合金CNC加工

Aluminium alloy CNC process

铝合金由CNC铝合金整体加工成型，质感提升

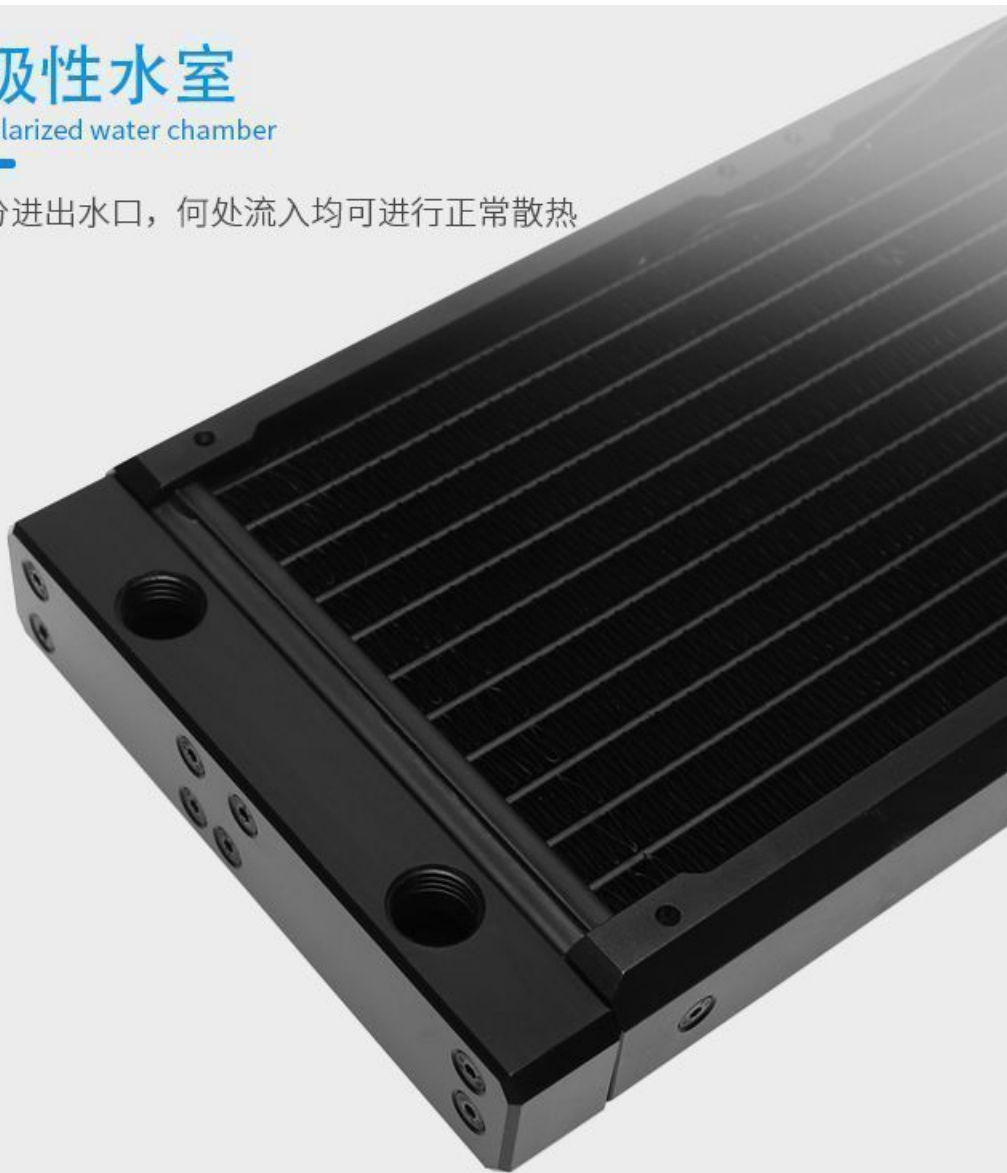


冷排支架模块由整体铝合金经CNC加工成型，采用阳极氧化工艺，
长时间使用仍可保持艳丽色彩，多色可选

无极性水室

Non-polarized water chamber

不区分进出水口，何处流入均可进行正常散热



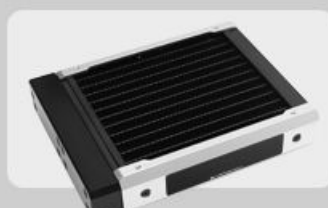
多色边框可选

Multicolored border can be selected

模块化铝合金边框，具备多种配色方案，总有一款适合您



黑色



银色



红色

Specifications

型号	FBCFRX-240P
材质	紫铜翅片，POM上水室、铝合金支架模块
内部结构	铜扁管，共12根 235.7mm*1.9mm*19.6mm
翅片	密度：18片/英寸；高23mm
性能	超多散热鳍片，超强散热性能
适配风扇	2个120风扇
风扇固定螺丝孔	8个/面
接口	2个G1/4螺纹孔
附件	M3*6螺丝 *16 M3*30螺丝 *8 M3*35螺丝 *8 2MM六角扳手 *1 M3*7*0.5黑色垫片 *8
尺寸	272.8*120.8*30mm
净重	559g
检测压力	0.32BAR
容量	96ml
颜色	多色可选

Additional Information

Brand	Barrowch
SKU	FBCFRX-240P-BK
Weight	6.0000
Color	Black
Radiator Size	240 (2 x 120mm)
Radiator Thickness	30mm
Vendor SKU/EAN	6937826663420

