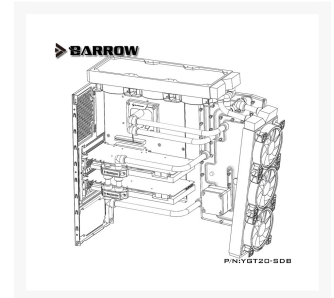


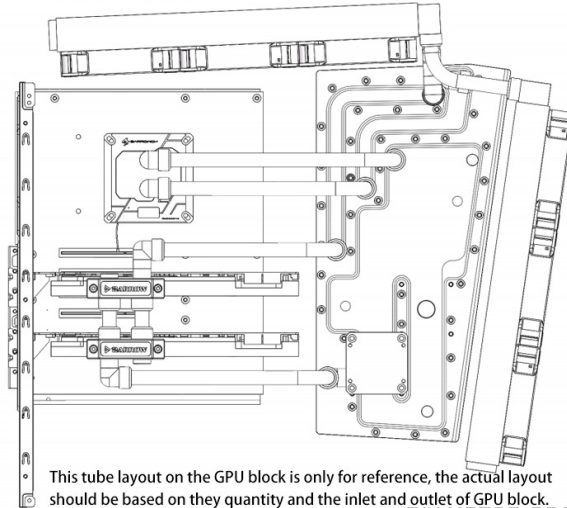


BARROW Barrow LRC2.0 waterway plate for IN WIN TOU case

\$189.99

Product Images





Short Description

This water channel board from Barrow is made out of acrylic and is made specifically to fit the interior of the IN WIN TOU.

Description

This water channel board from Barrow is made out of acrylic and is made specifically to fit the interior of the IN WIN TOU.

Please Note: The water channels within these waterway plates may update without notice. Overall dimension of waterway will stay the same

Features



LRC RGB FULL COLOR RGB LIGHTING CONTROL SYSTEM 2.0

Version 2.0 lamp with beads asynchronously static and dynamic lighting effects, that is, during the same time period of each lamp beads can be independently changed color. Built-in removable RGB lighting components, according to the actual need to replace the lighting components.



LRC2.0 lamplight

CONTROL SYSTEM 2.0

LRC full-color RGB lighting control system 2.0 includes BARROW 2.0 version manual controller, 16 way remote controller. Compatible with all BARROW' S 2.0 version of the RGB light-based components and other independent products and built-in lighting components products.



P/N: ARSKZQ
MANUAL CONTROLLER



P/N: DK301-16
16 WAY REMOTE CONTROLLER

LRC2.0 light effect can be synchronized with some of the motherboards' lighting effects through a conversion cable



ASUS



MSI



GIGABYTE



ASROCK

COMPATIBLE WITH ABOVE MOTHERBOARDS 5V RGB DIMMING SYSTEM, ABOUT OTHER BRANDS AND COMPATIBLE INFORMATION, PLEASE REFER TO THE MANUFACTURERS' RELEVANT INFORMATION.

Specifications

The motherboard models that the water channel integrated board compatible with are:....

- ROG STRIX Z390-E GAMING
- ROG STRIX Z390-H GAMING
- ROG STRIX Z370-F GAMING
- ROG MAXIMUS X HERO
- ROG MAXIMUS X HERO (WI-FI AC)
- ROG MAXIMUS IX HERO
- ROG STRIX Z370-E GAMING
- ROG STRIX Z370-H GAMING
- ROG STRIX Z370-F GAMING
- ROG STRIX B360-F GAMING
- ROG STRIX Z270F GAMING
- ROG STRIX Z270E GAMING
- ROG STRIX Z270H GAMING
- ROG MAXIMUS XI EXTREME
- ROG MAXIMUS XI GENE
- ROG Maximus XI Hero
- ROG Maximus XI Hero Black Ops
- ROG MAXIMUS VIII EXTREME/ASSEMBLY
- PRIME Z370-A
- PRIME Z390-A
- PRIME Z390-P
- TUF Z390-PRO GAMING
- TUF Z370-PRO GAMING
- MAXIMUS VIII HERO
- MAXIMUS VIII RANGER
- Z170 PRO GAMING
- Z170-AR

We recommend using the above models of motherboards and more compatible motherboards will be updating at any time.

Recommended product

Name	Model	Quantity
Barrow G1/4" 90°Rotary Adapter (Male to Female)	TWT90-v2.5	7
Barrow 45°ROTARY ADAPTER (MALE TO FEMALE)	TWT45-B01	2
Barrow G1/4" Male to Female Extender - 10mm	TNYZ-G10	3
Barrow G1/4" Male to Female Extender - 30mm	TNYZ-G30	2
Barrow Compression Fitting - OD: 14mm Rigid Tubing	TLGYKN-14	12
BARROW Multicolor New CD Composite plate Finish Stop Plug Fitting	TLCDT-V1	2
Barrow Flat push type check valve (Male to Female)	TTLPFG	1
Barrow 2016 New Manual automatic integrated Exhaust valve	TPQZ-V2	1
Barrow 360MM Dabel-a series Radiator (Thick:34MM)	DABEL-A 360	2
Barrow New Edition Water Cooling Liquid473ML	SLYS-V2	3
Barrow 14*10 Normal temperature type PETG Tube	PG1410-L	7
BARROW 16 ways full function RGB and fan integrated controller (support to remote control and synchronization motherboard RGB)	DK301-16	1
Barrow Aurora PWM speed control through-hole 17W pump kit for waterway plate	SPB17-T V2	1
Barrow Aurora RGB adjustable annular lighting effect hydraulic bearing PWM cooling fan	BF03-PR	6

The above list only shows the applicable fittings specifications. Players can purchase other products according to the above product specifications

Compatible CPU block



P/N:LTYK3-04 V2



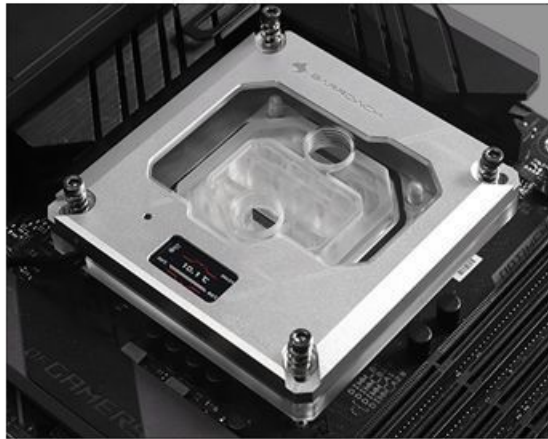
P/N:LTYKB-04N-V2



P/N:LTYKB-ARK



P/N:LTFHB-04N V2



P/N:FBLTFHI-04N V2

PURCHASE INFORMATION

1. When installing the waterway plate, please fix it slightly first, and then completely fix it after completely finished tubes layout, so as to avoid the improper installation;
2. Suggestion installation method: screws installation, including M4*8 mounting screws;
3. This waterway plate is only applicable to IIN WIN SFRAME TOU 2.0 case , not for others
4. Suitable for single and double graphics cards installation;
5. Material: Acrylic;
6. Compatible with BARROW' s all INTEL platform CPU blocks;
7. Compatible with one 34mm thickness 360 radiator;
8. Compatible with multiple different models of motherboards with super compatibility;
9. Controller type: LRC 2.0 Aurora RGB lighting control system;
10. (The standard does not contain controller. If need, please purchase it separately) ;
11. In case product appearance upgrade, without further notice, prevail in kind.

Additional Information

Brand	Barrow
SKU	YGT20-SDB
Weight	4.0000
Color	Clear
Reservoir Type	Distribution plate
Vendor SKU/EAN	6937826613241

