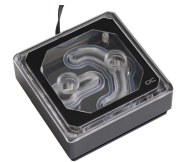
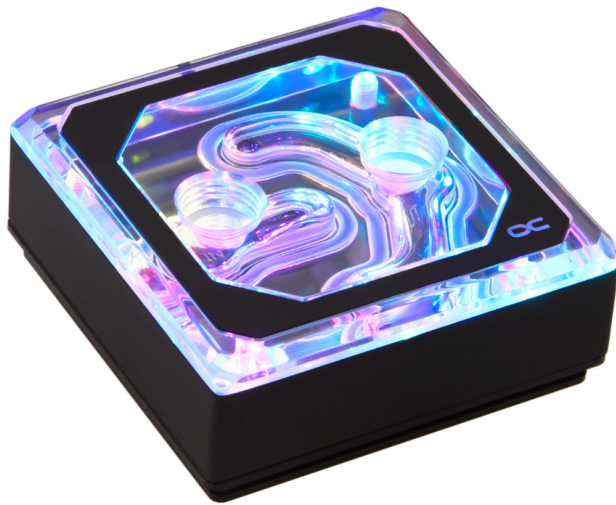


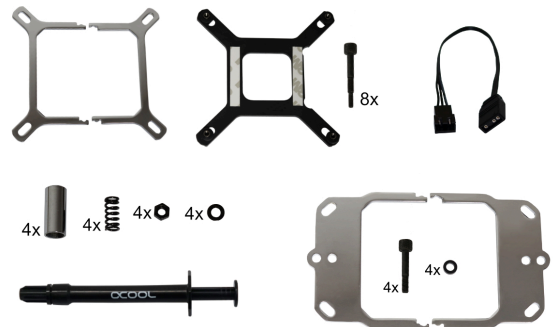
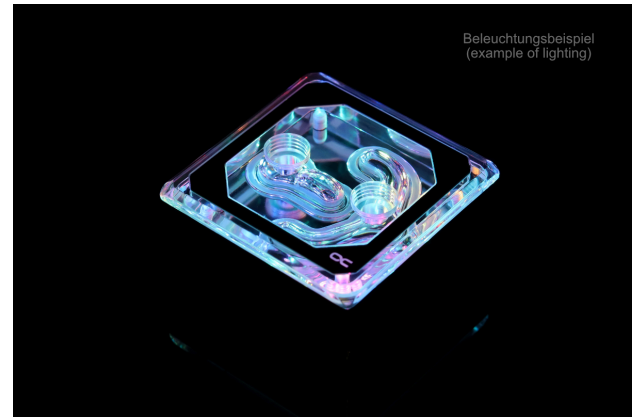
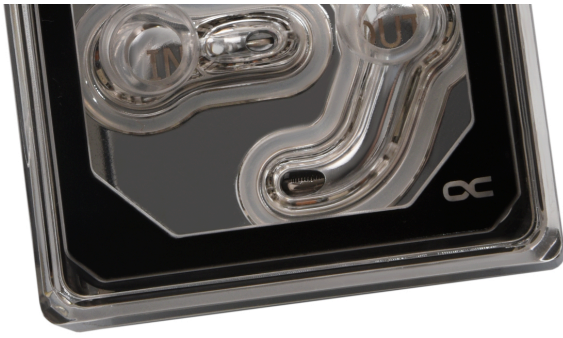


Alphacool Eisblock XPX Aurora Edge - Plexi Black Digital RGB

\$78.95

Product Images





Short Description

The new Alphacool Eisblock XPX Aurora Edge CPU water cooler offers fantastic performance thanks to the patented ramp design as well as boasting excellent quality. The new Aurora design in combination with the addressable digital RGB illumination offers many possibilities for outstanding illumination of the CPU water block.

Description

The new Alphacool Eisblock XPX Aurora Edge CPU water cooler offers fantastic performance thanks to the patented ramp design as well as boasting excellent quality. The new Aurora design in combination with the addressable digital RGB illumination offers many possibilities for outstanding illumination of the CPU water block.

Features

Performance in abundance!

Alphacool already developed and patented new flow technology for the first Alphacool Eisblock XPX series. The so-called "ramp system" ensures an even flow of water inside the cooler and sits in front of the diffuser plate. This ensures that the water is pressed evenly through the diffuser plate, which in turn pushes the water evenly over the cooling base. The cooling channels on the CPU cooler base has also been enlarged to a proud 34 x 32 mm to accommodate the ever-growing CPU DIES. This is especially true for multi-core processors with 4, 6, 8 or even 12 and more CPU cores. So that the heat from the CPU can be transferred to the water as quickly as possible. 81 cooling fins can be found on the cooling plate to ensure maximum heat diffusion. The fin structure has been reduced to just 0.2 mm in order to create the largest possible surface area in the smallest possible space.

And the lighting?

All new Eisblock XPX Aurora Edge CPU waterblocks come with addressable digital RGB lighting. The aRGB LEDs are integrated directly into the CPU water cooler and run once around the entire cooling block. With up to 15 digital RGB LEDs the entire CPU block is evenly and intensively lit. Of course, the brightness can be controlled by an appropriate controller. And as with all aRGB LED products all known effects can be created. From simple colour changes to wave effects and rainbow lighting, everything is possible. Of course, the Alphacool Eisblock Aurora coolers can also be connected and controlled via mainboards using the standard 3-pin 5V connector. The cable also has an integrated Y-adapter. This makes it easy to connect further Alphacool Aurora products in series without having to order separate Y-adapters. Extension cables may be needed if you want to connect the products in series, depending on the size of the case.

Is installation difficult?

Mounting the XPX Aurora Edge Eisblock cooler is simple. The backplate is simply attached to the mainboard from behind. The mounting frame for the AMD or Intel socket is clamped to the cooler and the corresponding mounting screws are pre-attached to this frame. Next, you simply apply thermal paste and you attach the cooler using the screws.

Please note: Remove the protective foil on the cooler base before use!

Unique Aurora Design

The Alphacool Eisblock Aurora Edge has been significantly changed in some points to its predecessor, the Eisblock XPX. The lower part of the cooler is completely made of brass and no longer of plexiglass or transparent nylon. This changes the overall feel and quality of the cooler. Not only is it heavier in the hand, but it is also much more stable than the usual Plexi CPU water coolers. In order to stand out visually from the normal Eisblock XPX Aurora CPU water cooler, the bottom of the cooler was kept completely in black. This emphasizes the visual effect of the water flow. The corners of the CPU cooler are more angular, which makes the cooler stand out from the normal Aurora Plexi Eisblock.

Specifications

Manufacturer:	Alphacool
Top cover material:	Plexi
Cooling plate material:	Copper plated
Socket:	Intel 1366, Intel 1150/1151/1155/1156, Intel 2011(-3), AMD AM4, AMD AM3(+)/AM3/AM2(+)/AM2/ 939/FM2(+)/FM2/FM1/G34/940, Intel 2066, AMD TR4, Intel LGA 3647
Cooling performance:	Excellent
Connector:	2xG1/4
Dimensions (L x B x H):	70 x 70 x 32,5mm

Technical details

- Dimensions (WxTxH): 70 x 70 x 32,5 mm
- Net weight: 407 g
- Max working temperature: 60 °C
- Material cooler: nickel plated copper
- Material bottom part: brass
- Material top: Plexi
- Threads: 2 x G1/4"
- Power supply Digital RGB: 3-Pin 5V
- Pressure tested: 1,5 Bar
- Certificates: CE, FC, ROHS

Additional Information

Brand	Alphacool
SKU	AC-12948
Weight	1.2000
Color	Clear
CPU Series	AMD AM4/AM3()/AM2()/FM2()/FM1()/754/939/940, Intel 115x, Intel 1366, Intel 2011(-3), Intel 775
Block CPU Type	Intel/AMD
Block Style	Nickel-Plexi
Vendor SKU/EAN	4250197129480

