



BARROWCH **BARROWCH Chameleon
Fish Removable 480
Radiator with Temperature
Display Screen PMMA
Acrylic Edition - Black**

\$99.95

Product Images



Short Description

The Barrowch Chameleon Fish comes in either 120, 240, 360, and 480mm lengths. Comes with temperature display screen that can be changed to either side of the radiator. It has a changeable water chamber that can be changed from PMMA to POM or vice versa. You also have the ability to change out the aluminum alloy

borders to various colors to match the color scheme of your build.

Description

The Barrowch Chameleon Fish comes in either 120, 240, 360, and 480mm lengths. Comes with temperature display screen that can be changed to either side of the radiator. It has a changeable water chamber that can be changed from PMMA to POM or vice versa. You also have the ability to change out the aluminum alloy borders to various colors to match the color scheme of your build.

Barrow and Barrowch was established in 2010. It is an export-oriented and domestically-manufactured manufacturing enterprise specializing in computer and industrial water cooling equipment and precision hardware components. The advanced design concept and internal structure are deeply loved by domestic and foreign enthusiasts of water cooling players.

- Dual pass radiator designed for computer liquid cooling
- High liquid and air flow design
- Copper fin spacing optimized for high flow fans
- Slim height for easy mounting
- Perfect for all overclocking and silent projects
- Integrated OLED LCD Screen

Features

实时温度检测

Real-time temperature detection

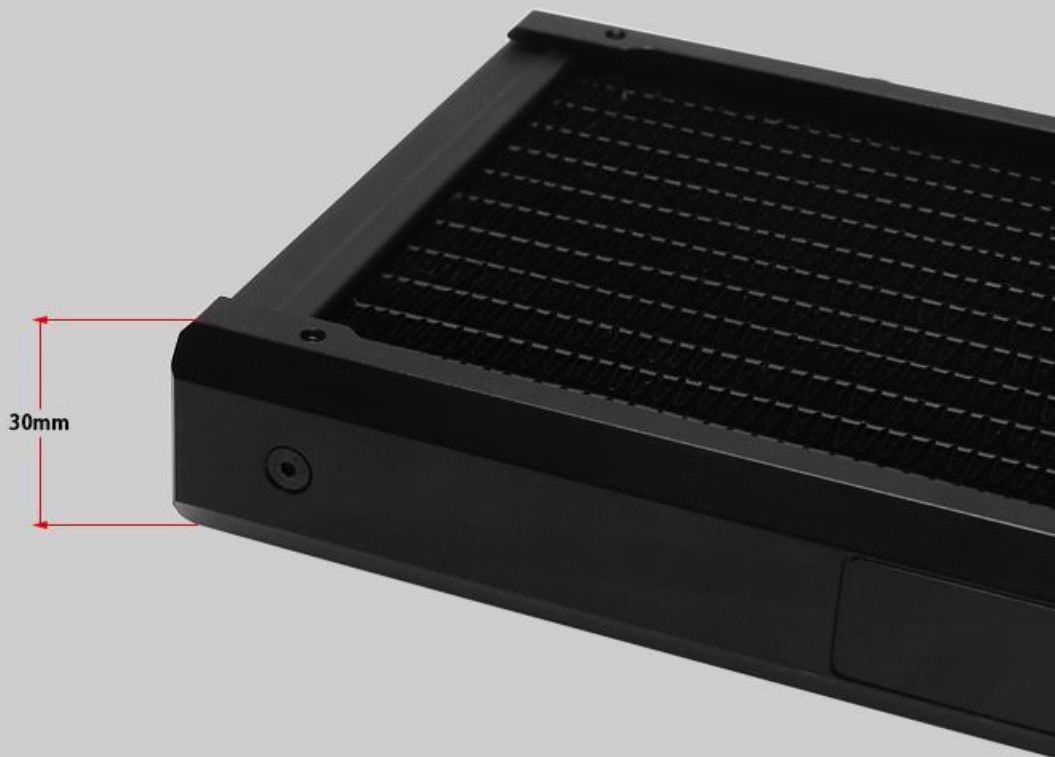
冷排单侧集成OLED显示屏，可实现对冷排整体温度的实时检测



厚度适中 散热强劲

Thickness is moderate, heat dissipation is strong

30MM厚度的黄金比例，性能强劲，可与机箱保持良好的兼容性



散热



降温



通风



黄金比例



美观

水室模块随心换

Water chamber module can be changed at will

冷排水室模块具有PMMA及POM两种不同材质，可按需购买



铝合金CNC加工

Aluminium alloy CNC process

铝合金由CNC铝合金整体加工成型，质感提升

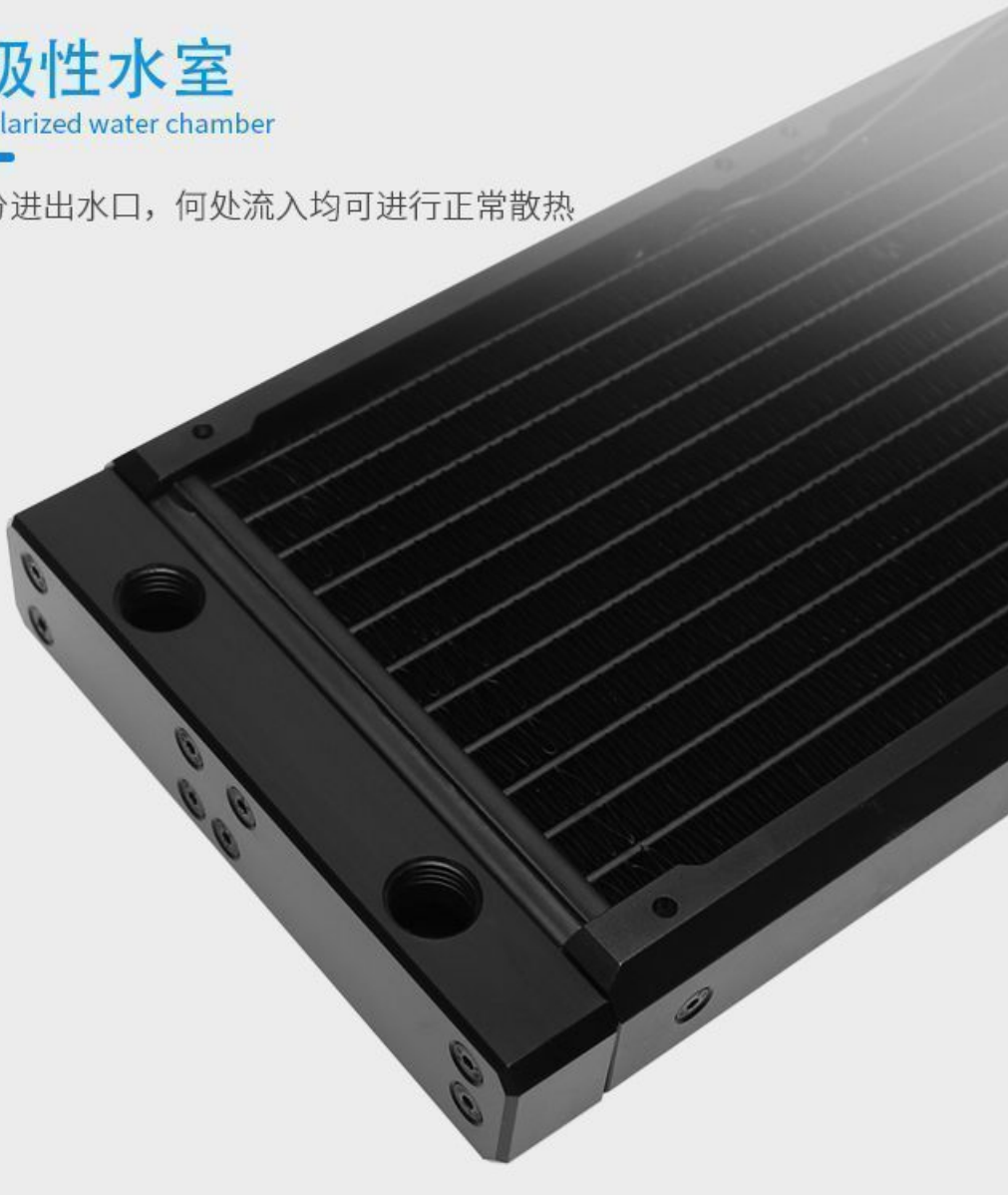


冷排支架模块由整体铝合金经CNC加工成型，采用阳极氧化工艺，
长时间使用仍可保持艳丽色彩，多色可选

无极性水室

Non-polarized water chamber

不区分进出水口，何处流入均可进行正常散热



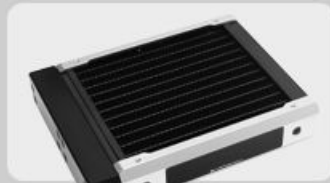
多色边框可选

Multicolored border can be selected

模块化铝合金边框，具备多种配色方案，总有一款适合您



黑色



银色



红色

Specifications

Radiator Specification

Model	FBCFRX-480P, FBCFRX-480Y
Material	Copper fin,aluminum alloy module,POM/Acrylic inlet module
Internal structure	Copper flat tube, 12 pcs, 472.5*1.9*19.6 mm
Fin	18 pcs/inch, height 23mm
Performance	Powerful thermal performance
Adapter fans	120 fan x 4
Fan fixing	Screw hole x 16 each surface
Interface	G1/4" x 2
Accessory	M3*6 screw x 32 M3*30 screw x 16 M3*35 screw x 16 2 mm hex wrench x 1 M3*7*0.5 black gasket x 16
Size	513.5*120.8*30 mm
Detecting pressure	0.32 Bar
Capacity	144 ml
Color	Black, Silver, Red

Appearance size



DIMENSION IN MM

[Install tutorial](#)

Additional Information

Brand	Barrowch
SKU	FBCFRX-480Y-V2-BK
Weight	8.0000
Color	Black
Radiator Size	480 (4 x 120mm)
Radiator Thickness	30mm
Vendor SKU/EAN	6937826663550

