



BARROW Barrow Jetting Type Micro Waterway CPU block (REAL GOLD EDITION) for Intel 115X Platform -Gold

\$66.95

Product Images



Short Description

These Barrow CPU waterblocks are made with high strength acrylic that will not crack, is highly transparent and has a longer service life. This CPU block version incorporates real GOLD!

Description

These Barrow CPU waterblocks are made with high strength acrylic that will not crack, is highly transparent and has a longer service life. This CPU block version incorporates real GOLD!

L.R.C LED SYSTEM

L.R.C LED SYSTEM

Built in RGB lighting components could achieve various colors changing and make sure that the water block looks more colorful.

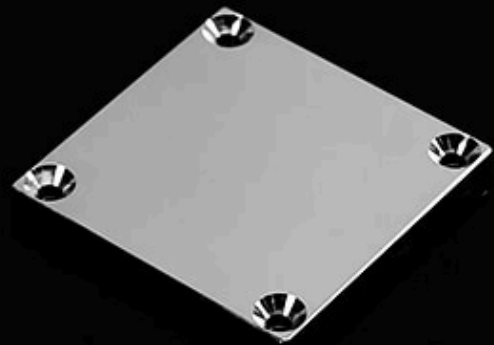


NICKEL PLATED COPPER BACKPLANE

NICKEL PLATED COPPER BACKPLANE

Copper with high thermal conductivity is the main material for backplane.

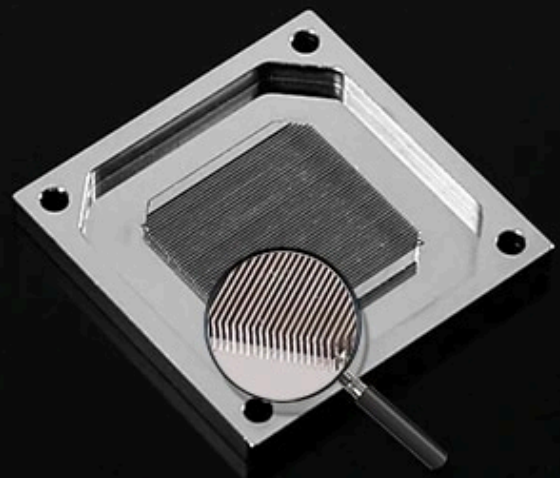
The thermal conductivity is second only to silver. Mirror polishing nickel plated process can prevent oxidation, extend service life and keep a very well connection with GPU.



WATER CHANNEL

0.4MM MICRO CHANNEL

The 58mm*58mm high purity nickel plated copper back plane provides up to 49 grooves micro water channels and each water channel are grooved in the end. It uses 4+2 asymmetric design (groove width 0.4mm + interval 0.2mm) so that the contact area of the coolant and the backplane is increased meanwhile the heat dissipation performance is enhanced.



灯光效果展示

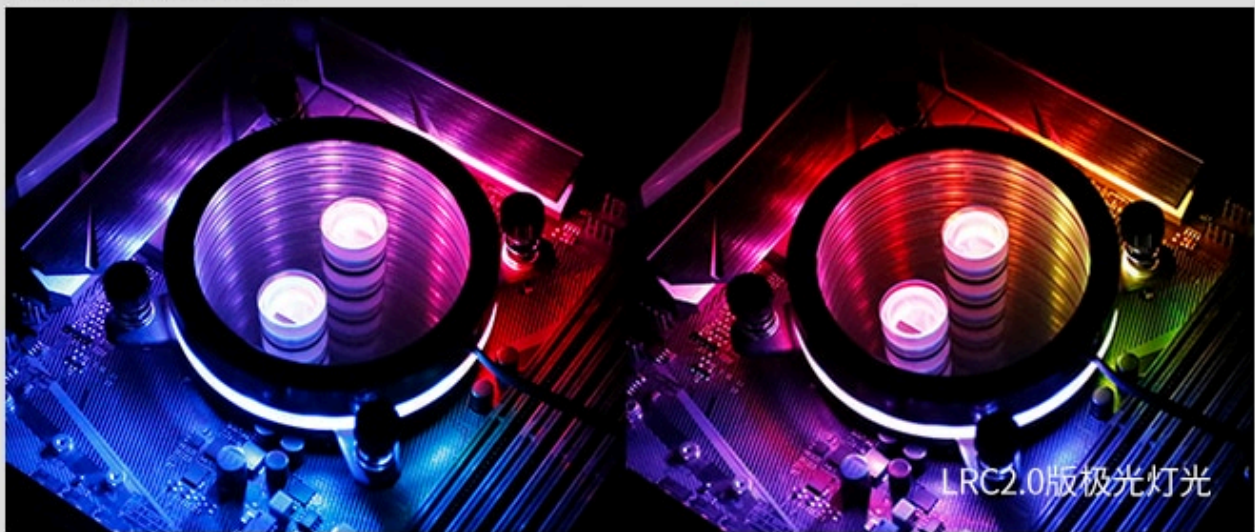
LIGHTING EFFECTS SHOW



LRC RGB FULL COLOR RGB LIGHTING

CONTROL SYSTEM 2.0

Version 2.0 lamp with beads asynchronously static and dynamic lighting effects, that is, during the same time period of each lamp beads can be independently changed color. Built-in removable RGB lighting components, according to the actual need to replace the lighting components.



CONTROL SYSTEM 2.0

LRC full-color RGB lighting control system 2.0 includes BARROW 2.0 version manual controller, 8 way remote controller. Compatible with all BARROW' S 2.0 version of the RGB light-based components and other independent products and built-in lighting components products.



P/N: ARSKZQ
MANUAL CONTROLLER



P/N: DK201
8 WAY REMOTE CONTROLLER

LRC2.0 light effect can be synchronized with some of the motherboards' lighting effects through a conversion cable



ASUS



MYSTIC
LIGHT
SYNC

MSI



GIGABYTE



ASROCK

COMPATIBLE WITH ABOVE MOTHERBOARDS 5V RGB DIMMING SYSTEM,
ABOUT OTHER BRANDS AND COMPATIBLE INFORMATION ,
PLEASE REFER TO THE MANUFACTURERS' RELEVANT INFORMATION.

产品展示
PRODUCT DISPLAY

Features

ORIGINAL IMPORTED ACRYLIC BOARD

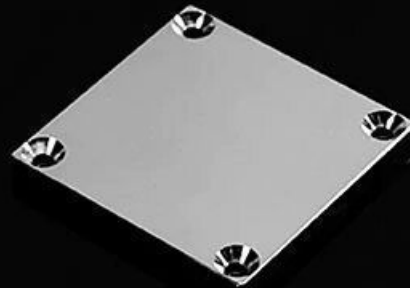
- Original imported acrylic raw materials
- No discoloration, no cracking
- Higher transparency and longer life

ORIGINAL IMPORTED ACRYLIC MATERIAL DOES NOT CHANGE COLOR, NO CRACK TRA
ORIGINAL IMPORTED ACRYLIC MATERIAL DOES NOT CHANGE COLOR, NO CRACK
ORIGINAL IMPORTED ACRYLIC MATERIAL DOES NOT CHANGE COLOR, NO CRACK TRAN



NICKEL PLATED RED COPPER PLATE

- Red copper with high thermal conductivity is used as the main material of the bottom plate
- Endothermic and heat transfer efficiency second only to silver



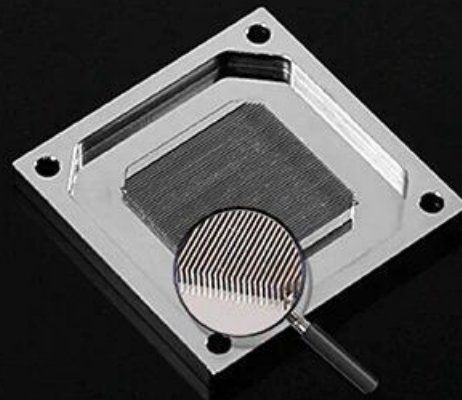
L.R.C LED SYSTEM

- Built-in RGB lighting components,
- Various color transformations are possible



0.4MM MICRO CHANNEL

- 58mm*58mm, high purity red copper nickel plated bottom plate
- Up to 49 micro-waterways, 4+2 asymmetrical (0.4mm groove width + 0.2mm interval) waterways
- Increases the area of the coolant in contact with the bottom plate and enhances heat dissipation





LRC RGB FULL COLOR RGB LIGHTING CONTROL SYSTEM 2.0

Version 2.0 lamp with beads asynchronously static and dynamic lighting effects, that is, during the same time period of each lamp beads can be independently changed color. Built-in removable RGB lighting components, according to the actual need to replace the lighting components.



CONTROL SYSTEM 2.0

LRC full-color RGB lighting control system 2.0 includes BARROW 2.0 version manual controller, 8 way remote controller. Compatible with all BARROW' S 2.0 version of the RGB light-based components and other independent products and built-in lighting components products.



P/N:ARSKZQ
MANUAL CONTROLLER



P/N:DK201
8 WAY REMOTE CONTROLLER

LRC2.0 light effect can be synchronized with some of the motherboards' lighting effects through a conversion cable



ASUS



MSI



GIGABYTE



ASROCK

COMPATIBLE WITH ABOVE MOTHERBOARDS 5V RGB DIMMING SYSTEM, ABOUT OTHER BRANDS AND COMPATIBLE INFORMATION, PLEASE REFER TO THE MANUFACTURERS' RELEVANT INFORMATION.

Specifications

- Heatsink Material: Copper
- Compatible CPU: \
- Type: Water Cooling
- Power Interface: 3PIN
- Fan Speed Control: 1300 RPM
- Fan Life: 20000 hrs
- Power: 1.56W
- Fan Size: 120x120x25mm
- Noise: 25dBA
- Bearing: Fluid Bearing
- Application: Computer Case
- Lines: 2 Lines
- Brand Name: BARROW
- Model Number: LTFHB LTFHBX LTFHBA-04N V2
- Air Volume: 30CFM
- Package: No

Additional Information

Brand	Barrow
SKU	LTFHB-04N-V2-GD
Weight	1.5000
Color	Gold
CPU Series	Intel 115X/1200
Block CPU Type	Intel
Block Style	Nickel
Vendor SKU/EAN	6937826612282

