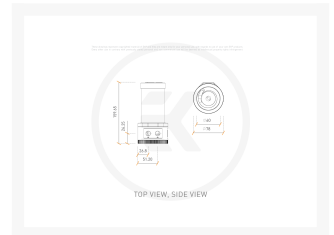
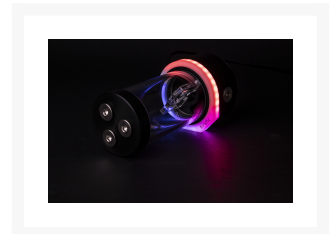




EK-Quantum Kinetic TBE 200 D5 Body D-RGB - Acetal

\$136.99

Product Images





Short Description

EK-Quantum Kinetic TBE D5 Body D-RGB are the stand-alone pumpless versions of the newly released tubular style Kinetic TBE combo units. This means the customer is able to upgrade his old EK-XRES Revo D5 unit or to utilize any existing previously owned D5 pump. These combo units are equipped with a total of six G1/4" ports so that users can choose the most optimal setup for their liquid cooling loops. This product does not include a pump.

Description

EK-Quantum Kinetic TBE D5 Body D-RGB are the stand-alone pumpless versions of the newly released tubular style Kinetic TBE combo units. This means the customer is able to upgrade his old EK-XRES Revo D5 unit or to utilize any existing previously owned D5 pump. These combo units are equipped with a total of six G1/4" ports so that users can choose the most optimal setup for their liquid cooling loops.

The top now features three G1/4" ports, one of which has a pre-installed nickel-plated brass internal tube which helps to prevent the splashing of the coolant inside the reservoir if the top is to be used as an inlet. This reduces the chances of air being sucked in by the pump and foaming of the coolant as well. Any of these ports can also be used for filling the system or adding additional accessories (thermal probes, LEDs, etc.)

Another three industry-standard G1/4" ports are available in the bottom combo housing. The upgrade compared to the previous combo unit is the 3rd available side port usable as either an optional inlet or a drain port.

A special rubber shock absorber is used to de-couple the main pump body from the mounting clip for silent operation, free of vibration-induced noise. Additionally, horizontal and vertical positioning is supported for easier tube routing possibilities.

The 60mm diameter tube is made of high-quality acrylic material, while the reservoir bottom/pump top is CNC machined black POM acetal. The sealing is performed by a quality EPDM o-ring.

The integrated addressable D-RGB is compatible with popular RGB sync technologies from all major motherboard manufacturers. The arrow marking on the 3-pin LED connector is to be aligned with the +5V marking on the D-RGB header.

This reservoir can be easily upgraded with longer acrylic tubes used by EK-RES X3 series reservoirs.

Specifications

Technical specifications:

- Reservoir diameter 60mm
- Reservoir free volume: 205mL
- Overall unit height (with pump installed): 200mm
- Mounting hole pattern: 65x34mm
- D-RGB connector standard 3-pin (+5V, Digital, Blocked, Ground)

Enclosed:

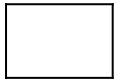
- EK-Quantum Kinetic TBE 200 Body D-RGB
- Mounting clip with rubber insert
- Self-adhesive mounting hole pattern sticker
- Mounting mechanism (incl. required Allen keys)
- Installation manual

Made in Slovenia - EU!

PLEASE NOTE:

- This product should NOT be installed with any aluminum Fluid Gaming parts!

Additional Info



G1/4

Additional Information

| | |
|----------------|-------------------------------|
| Brand | EK Waterblocks |
| SKU | EK-KIN-TBE-200-D5-BDY-DRGB-AC |
| Weight | 5.0000 |
| Color | Black |
| Reservoir Type | Tube Res |
| Pump Type | Laing D5 |
| Vendor SKU/EAN | 3831109822470 |

