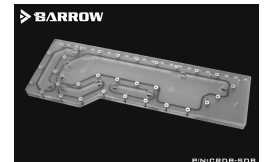




BARROW Barrow Waterway plate for COUGAR DarkBlader case Aurora

\$134.50

Product Images



BARROW



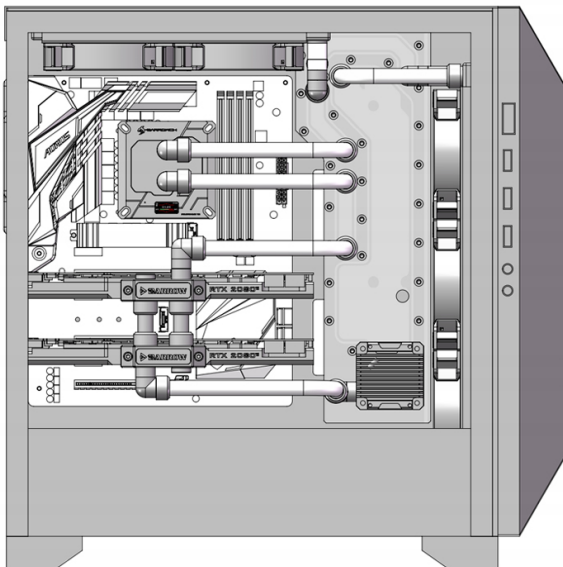
P/N:CRDB-SDB

BARROW



P/N:CRDB-SDB

This tube layout of the GPU block is only for reference, the actual layout should be based on their quantity and the inlet and outlet of GPU block.



P/N:CRDB-SDB

Short Description

This water channel board from Barrow is made out of acrylic and is made specifically for the COUGAR DarkBlader case

Description

This water channel board from Barrow is made out of acrylic and is made specifically for the COUGAR

DarkBlader case

Please Note: The water channels within these waterway plates may update without notice. Overall dimension of waterway will stay the same

Specifications

Compatible CPU block



P/N:LTYK3-04 V2



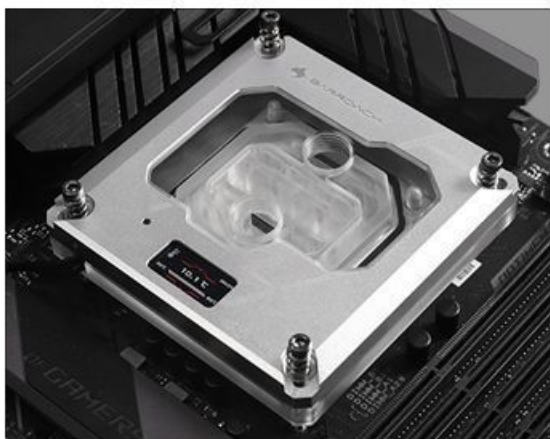
P/N:LTYKB-04N-V2



P/N:LTYKB-ARK



P/N:LTFHB-04N V2



P/N:FBLTFHI-04N V2

Water channel board compatible with main board model	
ROG STRIX Z390-E GAMING	ROG MAXIMUS XI GENE
ROG STRIX Z390-H GAMING	ROG Maximus XI Hero
ROG STRIX Z370-F GAMING	ROG Maximus XI Hero Black Ops
ROG MAXIMUS X HERO	ROG MAXIMUS VIII EXTREME/ASSEMBLY
ROG MAXIMUS X HERO (WI-FI AC)	PRIME Z370-A
ROG MAXIMUS IX HERO	PRIME Z390-A
ROG STRIX Z370-E GAMING	PRIME Z390-P
ROG STRIX Z370-H GAMING	TUF Z390-PRO GAMING
ROG STRIX Z370-F GAMING	TUF Z370-PRO GAMING
ROG STRIX B360-F GAMING	MAXIMUS VIII HERO
ROG STRIX Z270F GAMING	MAXIMUS VIII RANGER
ROG STRIX Z270E GAMING	Z170 PRO GAMING
ROG STRIX Z270H GAMING	Z170-AR
ROG MAXIMUS XI EXTREME	We recommend the use of the above models of motherboard, more compatible motherboard updates at any time
Players can match different specifications of offset transfer seat "TX360PZ", "tx360pz-15", can be compatible with any platform motherboard	

Recommended products		
Name	Model	Number
Barrow 90°Rotary Adapter (Male to Female)	TWT90-v2.5	7
Barrow Male to Female Extender - 10mm	TNYZ-G10	2
Barrow Male to Female Extender - 7.5mm	TNYZ-G7.5	1
Barrow Male to Female Extender - 40mm	TNYZ-G40	2
Barrow Compression Fitting(Extended Edition) - 14mm OD Rigid Tubing	TYKN-K1410 V4	12
Barrow Dual G1/4" Adjustable Aqua Link Pipe (22-31MM)	TSSXK-A01	2
Barrow Multicolor New CD Composite plate Finish Stop Plug Fitting	TLCDT-V1	1

Barrow Flat push type check valve (Male to Female)	TTLPFG	1
Barrow 2016 New Manual automatic integrated Exhaust valve	TPQZ-V2	1
Barrow 16 ways full function RGB and fan integrated controller (support to remote control and synchronization motherboard RGB)	DK301-16	1
Barrow 360MM Dabel-a series copper Radiator (Thick:30MM)	Dabel-30a 360	1
Barrow 360MM Dabel-a series copper Radiator (Thick:30MM)	Dabel-30a 240	1
Barrowch PWM speed control 17W through-hole pump for waterway plate Intelligent edition	FBSP17B-T	1
Barrow New Edition Water Cooling Liquid	SLYS-V2	2
Barrow 14*10 Normal temperature type PETG Tube (ID: 10MM, OD: 14MM, Length: 500MM)	PG1410-L	6
Barrow RGB full color speed regulation and lighting integrated fan with Hydraulic bearing PWM speed regulation	BF04-PR	5
The above list only shows the applicable connector specifications. Players can choose other products according to the above product specifications		

Additional Information

Brand	Barrow
SKU	CRDB-SDB
Weight	4.0000
Color	Clear
Reservoir Type	Distribution plate
Vendor SKU/EAN	6937826614132

