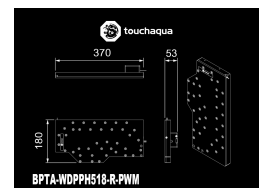
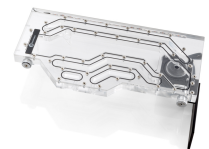
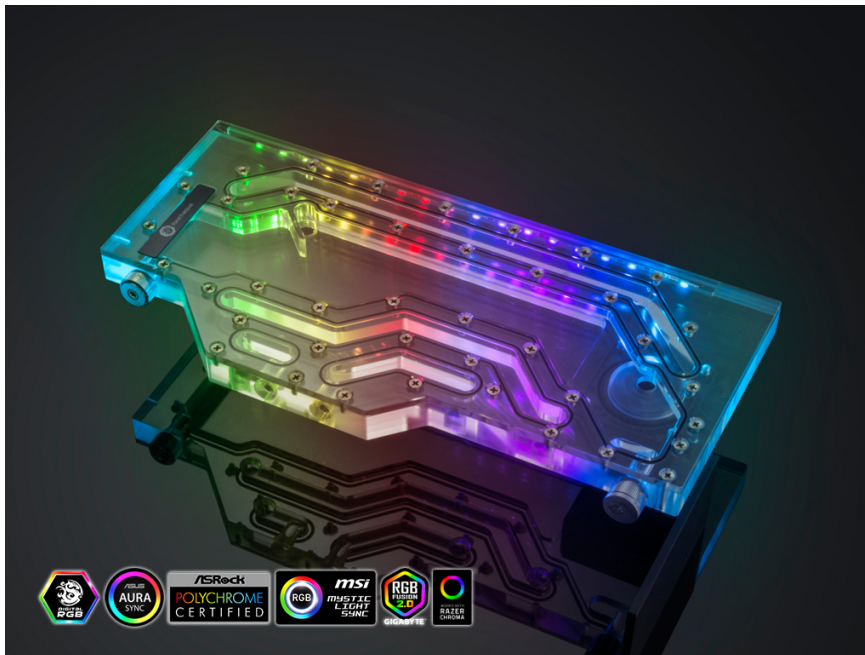




# Bitspower Touchaqua Sedna PH518 for Phanteks ENTHOO EVOLV X GLASS Case

\$191.50

## Product Images



## Short Description

Owners of Phanteks ENTHOO EVOLV X GLASS cases, Bitspower has you covered for your water reservoir and pump needs with the Bitspower Touchaqua Sedna PH518. While being a perfect fit within this mid-tower chassis, the reservoir's PWM enabled S1 pump is dissimulated at the back in order to provide an unaltered look to your PC.

## Description

---

### Bitspower Touchaqua Sedna PH518 for Phanteks ENTHOO EVOLV X GLASS Case

Owners of Phanteks ENTHOO EVOLV X GLASS cases, Bitspower has you covered for your water reservoir and pump needs with the Bitspower Touchaqua Sedna PH518. While being a perfect fit within this mid-tower chassis, the reservoir's PWM enabled S1 pump is dissimulated at the back in order to provide an unaltered look to your PC.

With novice modders in mind, Bitspower designed a reservoir that is easy to install while providing a professional look. Equipped with multiple water inlets and outlets to route the water from the radiator to the VGA than the CPU, this reservoirs also gives you more playroom for the graphics card location with a dual inlet/outlet designed to prevent having to bend more tubes and create a cleaner look to your loop.

The Bitspower Touchaqua Sedna PH518, equipped with Bitspower Digital RGB, is sure to become the center of attention of your case with bright LEDs that are certified by ASUS AURA Sync, GIGABYTE RGB Fusion, MSI Mystic Light Sync, and ASRock Polychrome.

## Specifications

---

LED Color : Digital RGB

LED Strip Management By Bitspower Digital RGB And Certified By ASUS AURA Sync, GIGABYTE RGB Fusion, MSI Mystic Light Sync, ASRock Polychrome and Razer Chroma

Compatibility :

Phanteks ENTHOO EVOLV X GLASS

Included :

1set of BPTA-WDPPH518-R-PWM

1pcs of BPTA-EFW-V2-GS

1pcs of BPTA-EXAIR-GS

1pcs of Bracket

1set of Mounting Screws

S1 Pump Spec.

Rated voltage: 12V DC

Power consumption: 17W

Maximum flow: 960L/h

Noise: 40~45dBA

Maximum system temperature: 60°C

PWM: Yes

Electric Connector: Molex 4 Pin

Warranty: 2 years

Dimension(LxWxH) : 370x180x53 MM

I wanna show off, but what's the support I'd need?

◆DRGB

The end of power supply is 3PIN. The sequence is +/D/↓ (some motherboards are shown +5V/D/↓, and the plug is like 4PIN but the 3rd PIN is empty). Please plug in the corresponding direction of motherboard, controller or the wire integrator for one to many. If choosing the motherboard as the power supply, the light effect can be synchronize with MB.

\*\*\* Bitpower reserves the right to change the product design and interpretations. These are subject to change without notice. Product colors and accessories are based on the actual product. \*\*\*

Additional Information

|                |                     |
|----------------|---------------------|
| Brand          | Bitpower            |
| SKU            | BPTA-WDPPH518-R-PWM |
| Weight         | 8.0000              |
| Color          | Clear               |
| Reservoir Type | Distribution plate  |
| Pump Type      | DDC PWM             |
| Vendor SKU/EAN | 4712914783714       |

