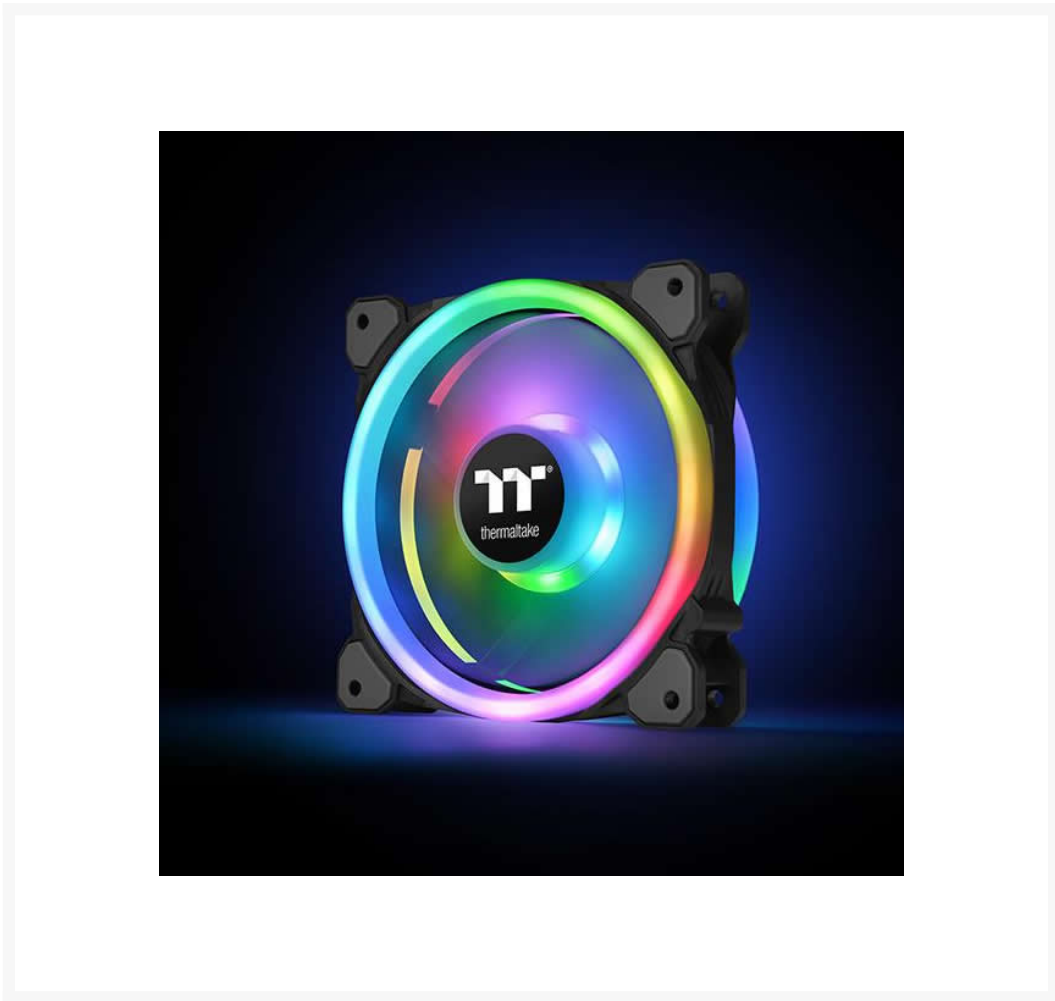


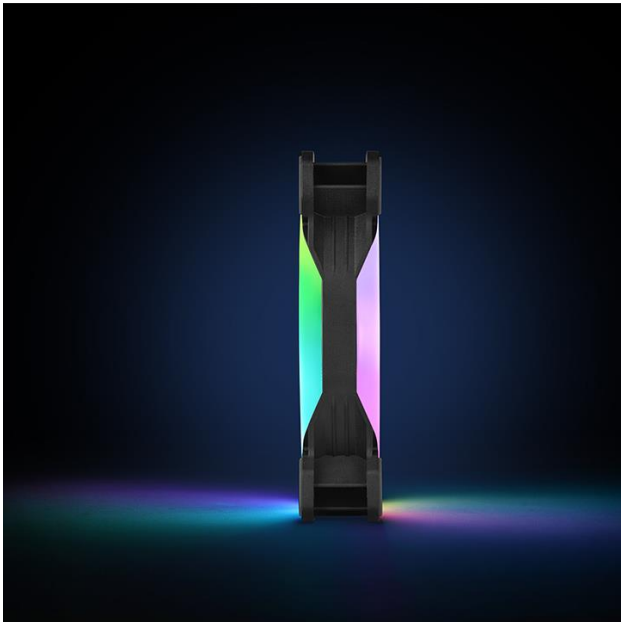


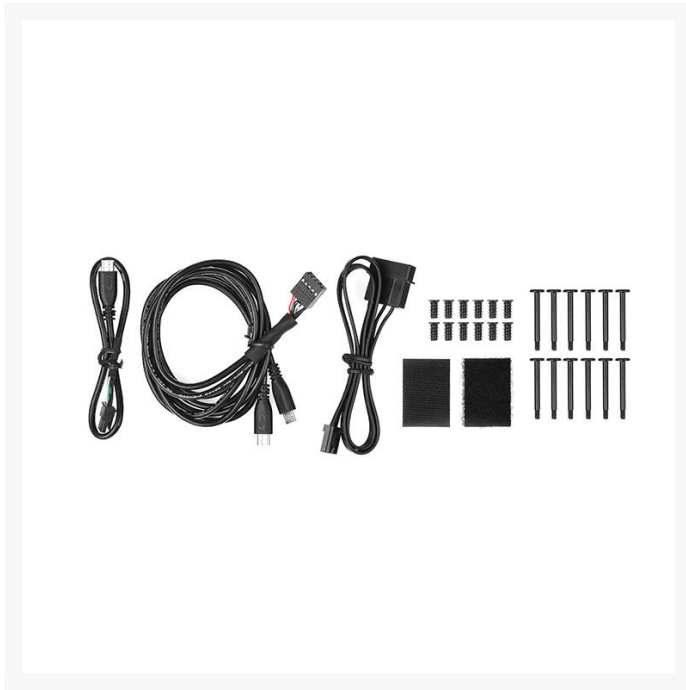
Thermaltake Riing Trio 14 RGB Radiator Fan TT Premium Edition (3-Fan Pack)

\$149.99

Product Images







Short Description

Thermaltake Riing Trio 14 RGB is the world's first radiator fan with 3 independent 16.8 million colors LED rings design, featuring 30 addressable LEDs in total and supports Thermaltake's patented TT RGB PLUS Software, Amazon Alexa Voice Service and Razer Synapse 3 (Razer Chroma).

Description

Thermaltake Riing Trio 14 RGB is the world's first radiator fan with 3 independent 16.8 million colors LED rings design, featuring 30 addressable LEDs in total and supports Thermaltake's patented TT RGB PLUS Software, Amazon Alexa Voice Service and Razer Synapse 3 (Razer Chroma). The fan itself utilizes a PWM controlled 140mm high-static pressure fan, long-life hydraulic bearing and compression fan blade design, delivering remarkable cooling performance without sacrificing quiet operation – "Three-of-a-kind always beats two pair, Riing Trio!"

Features

TT RGB PLUS

TT RGB PLUS Ecosystem is the intelligent lighting system for PCs that combines the most advanced addressable LED lighting with Thermaltake's patented TT RGB PLUS Software. TT RGB PLUS ecosystem provides nearly unlimited possibilities for playing with colors, synchronizing lights to games, music, CPU temperatures or other TT RGB PLUS products, including case fans, CPU/VGA waterblocks, AIO CPU coolers, PSUs, LED strips and peripherals. The patented software allows users to change the light modes, colors,

speeds, brightness, fan speeds, and even supports AI voice control in iOS and Android devices.

Patented TT RGB PLUS Software & App

Monitor the fan performance, adjust the fan speeds, and customize the lighting effects for Thermaltake RGB PLUS series products with the patented TT RGB PLUS Software and an exclusively designed mobile app. Choose a function from below and scroll down to read the details.

Taiwan Patent: 105216989

*TT RGB PLUS App will support Riing Trio Series from the third quarter of 2018.

SyncALL, Say "Hello TT" Thermaltake AI Voice Control

Talking to TT RGB PLUS App is an easier, faster way to set lights for your systems. You can ask it to turn the lights on or off, switch lights modes, dim the lights, change light colors, or adjust lights speeds or fan speeds.

*TT AI Voice Control will support Riing Trio Series from the third quarter of 2018.

Profiles

Conveniently control all fans and customize the lights at the same time by setting up to five profiles for each fan controller. Each controller your system connected is displayed at the top left of the interface for you to quickly access. Within each profile, you can check which fan is set to what operating speed and lighting effect. You can even "SAVE" and apply the settings to other fan controllers your system is running.

Fan Speeds

Simply drag the slider bar to adjust your fan speed RPM on a dedicated control panel. The software is also included a number of preset fan modes that allow you to set the fans to 'Silent Mode' where the RPM performs between a 500 – 640 RPM range, or 'Performance Mode' which operates and dynamically adjusts all the way up to 1000 RPM. Besides running at the optimal RPM range, you can customize the speed by disabling PWM.

Fan Alert

The software offers real-time fan warning alerts when performance operating issues have emerged. The control panel of the failed fan will be grey out, so you can quickly identify which fan is causing issues.

Color Palette

Immediately personalize your lighting with the recommended color palette. You can change colors and brightness for the LED ring which features 16.8 million colors, or 12 single LEDs where the lights can be adjusted individually. You also can let each LED display a specific color. Press "Color", enter the decimal color coded, and then save it.

Light Modes

Apply one of the present light modes that allow you to switch between different lighting schemes along with three "Color modes" (RGB, Single and Off) and four "Light Speeds" (Slow, Normal, Fast and Extreme).

- Copy Color– Seamlessly transfer lighting effects of the first fan across to other fans.
- Full Lighted – A static lighting with your color choice, including RGB colors and single color.

- Sound Control – Sync lights with your favorite music that is imported from your PC, and see how they react to the beat.
- Flow – Directional RGB colored flow across the individual LED of the ring.
- RGB Spectrum – A seamless transition through the entire 16.8 million RGB color spectrum.
- Ripple – Lights ripple out across the entire fan with your choice of 16.8 million colors.
- Blink – Lights keep flashing on and off with single color or RGB colors.
- Pulse – A slow fade in and fade out with your color choice.
- Wave – A RGB wave flows across the entire fan.

Thermal

Make your CPU temperature visible, and track it easily. The software has a built-in temperature sensor that detects and displays changes in CPU temperature in real-time. The LED ring offers an additional visual cue. The color corresponds to the temperature, ranging from blue (CPU temperature $\leq 40^{\circ}\text{C}$) to Red (CPU temperature $\geq 65^{\circ}\text{C}$).

Sync with Razer Chroma Lighting

All Thermaltake TT RGB PLUS products are able to connect into the Razer Chroma ecosystem. Users who have installed both the TT RGB PLUS Software and Razer Synapse 3 can experience synchronized gaming and RGB lighting effects on their TT RGB PLUS liquid cooling system and gaming gear! From cooldown timers, health bars, and flashy ultimate indicators, to subtle ambient lighting that sets the perfect mood for each game, Razer Chroma provides an experience that transcends the screen and into your full setup, for a truly immersive experience.

* TT RGB PLUS Ecosystem and Razer Chroma Lighting synchronization will be enabled in the fourth quarter of 2018.

Works with Amazon Alexa

All Thermaltake TT RGB PLUS products support Amazon Alexa Voice Service, allowing you to control the lights or fan speeds by talking to the Alexa-enabled device. With the support of Amazon Alexa, TT RGB PLUS products also offer an additional visual cue for checking current weather condition in your location or anywhere in the world. All you have to do is simply starting the sentence with “Alexa, tell Thermaltake”, then the lighting color will correspond to the weather condition in the location.

*Amazon Alexa Voice Service will support Riing Trio Series from the fourth quarter of 2018.

The World’s 1st Three Independent 16.8 Million Colors LED Ring Design

Featuring 30 addressable LEDs (front: 12; middle: 6; back: 12), great light coverage, and uniform color and brightness, the built-in LED ring can paint your build with 16.8 million colors.

Digital Lighting Controller

The controller is designed with a DIP switch on the back. Hence, you can set a number for each controller easily. You can add up to 5 devices to one lighting controller and up to 16 controllers to the software. The controller and the coding guide are included in all packs.

*It is recommended to connect up to 1 controller and 5 Riing Trio fans on one peripheral cable (Molex) only.

*DO NOT connect Riing Trio fans to other TT RGB PLUS controllers.

PWM Controlled Fan with 9 Fan Blade Design

140mm PWM controlled fan with unique 9 blades design is engineered to generate higher airflow without compromising on ultra-silent operation.

Extraordinary Cooling Performance

Riing Trio Series continues the high static pressure fan design of Thermaltake Riing Series. The CFM of Riing Trio fans is 41.13 that is equal to 69.83022 m³/h. In other words, the air volume that the fan can exhaust per hour can fill up 632 pieces of super tower chassis. In the video, you can clearly see the superiority of the high-performance Riing Trio fans.

Hydraulic Bearing with Low-Noise Design

The hydraulic bearing self-lubricates with a high-quality, friction-reducing substance, which lowers operation noise while improving thermal efficiency. The seal cap prevents lubricant leakage and extends the lifespan of the unit.

Anti-Vibration Mounting System

In-mold injection anti-vibration rubber pads provide a hassle-free usage with 80% protection coverage for all corners.

Specifications

P/N	CL-F077-PL14SW-A (Fan x3, Controller x1)
Fan Dimension	140 x 140 x 25 mm
Interface	USB 2.0 connectors (9 Pin)
System compatibility	Windows 7 / 8 / 8.1 / 10
Fan Started Voltage	9.0 V
Fan Rated Voltage	12 V & 5V
Rated Current	Fan 0.17 A (only one fan)
Power Input	12V – 6.12 W . 5V – 15.4 W (Fan*3)
Fan Speed	500 ~ 1500 R.P.M
Max. Air Flow	66.59 CFM

Noise	25.6 dB-A
Bearing Type	Hydraulic Bearing
Life Expectation	40,000 hrs,25°C
Weight	216 g

* Specifications are subject to change without notice.

* The product picture(s) is only for your reference, it may differ from the actual product.

Additional Information

Brand	Thermaltake
SKU	CL-F077-PL14SW-A
Weight	2.5000
Color	Black
Fan Dimensions	140mm
Fan Width	25mm
Fan Connection	USB
Fan Voltage	12 VDC
Fan RPM	1400
Fan CFM	66
Fan Noise (dB)	26
LED Color	Addressable/Digital RGB

