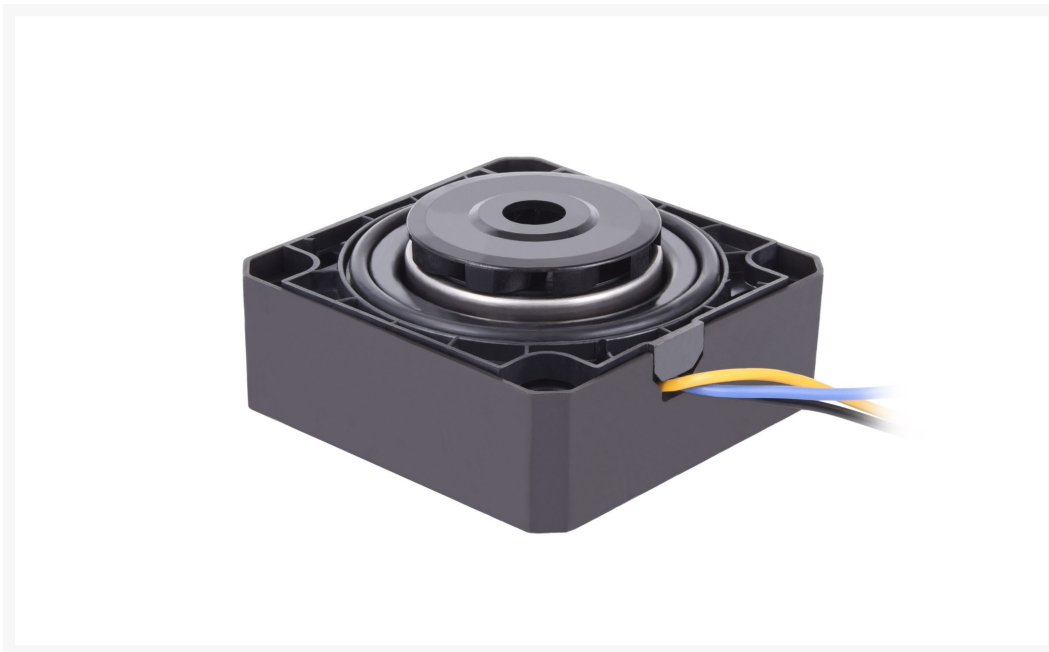




Alphacool ES Laing DDC310 Pump - Single black plastic bottom

\$52.50

Product Images



Short Description

The Alphacool ES Solution Laing DDC310 pump serves as the foundation for various 1 to 4U server solutions from Alphacool. The unit is based around the very popular Alphacool DDC pump and has been coupled with a simple pump base to maintain compatibility with various Enterprise Solution reservoirs.

Description

The Alphacool ES Solution Laing DDC310 pump serves as the foundation for various 1 to 4U server solutions from Alphacool. The unit is based around the very popular Alphacool DDC pump and has been coupled with a simple pump base to maintain compatibility with various Enterprise Solution reservoirs.

Features

Compact and powerful.

The flat design of the Laing DDC310 pump saves space and fits with the corresponding Enterprise reservoirs from chassis as small as a 1U server rack. This results in a very powerful pump that can be used in the smallest of spaces. The DDC310 variant offers with a delivery height of 2.44m enough power to operate an extensive water loop. The performance is enough to operate a dual or quad socket system including reservoir and radiators. The performance of the pump is also sufficient to operate a render server with up to 4 graphics cards.

Spherical Ceramic Bearing

The pump uses a shaftless ball motor or spherical bearing. The motor is driven by magnets while the rotor is mounted on a ball-ceramic bearing. This makes the pump maintenance-free, as the bearing is self-adjusting and maintenance-free. The pump is lubricated by the coolant during operation. This makes the Alphacool ES Solution Laing DDC310 pump a so-called wet rotor pump. Due to its design, even small particles of dirt are no problem for the pump.

Installation and Commissioning

The pump is delivered with a classic plastic bottom which ensures a high compatibility to all Enterprise Solution products. However, the pump can also be mounted on all existing DDC pump tops from Alphacool. The pump comes with a corresponding O-ring, only the mounting screws must be used from the respective reservoir, as these may differ in length. The power is supplied via a 4-pin Molex connector, the speed can be read out via a 3-pin Molex connector. This is usually done via the 3-pin fan connector on the mainboard or via an appropriate fan controller.

Specifications

Color:	black
Power connector:	4Pin Molex
Max. Flow:	200l/h, Standard (smaller than 500l/h)
Max. Discharge head:	2,44m, Good (2 to 4m)
Power input:	10W

Water outlet:	Not available
Water inlet:	Not available
Material:	Hartcoal, Brass, Aluminiumoxid
Voltage:	12V DC
Max. System temperature:	60° C
Approved fluids:	Water, Water/ glycol mixture
Manufacturer:	Alphacool
Dimensions:	62 x 62 x 28 mm

Technical data:

- L x W x H: 62 x 62 x 28 mm
- Weight: 167 g
- Material: Stainless steel, EPDM, Ceramics
- Voltage range: 8 - 13,2 V
- Starting voltage: 9 V
- Voltage: 12 V DC
- Power consumption: 10W
- Max delivery height: 2,44m
- Max flow rate: 200 l/h
- Power connector: 4-Pin Molex
- Speedometer signal: 3-Pin Molex
- Max working temperature: 60° C

Scope of delivery:

- 1 pcs DDC310 Pump
- 1 pcs O-ring
- Plastic bottom

Additional Information

Brand	Alphacool
SKU	AC-13991
Weight	2.0000
Color	Black
Pump Type	DDC
Pump Voltage	12 VDC
Vendor SKU/EAN	4250197139915

