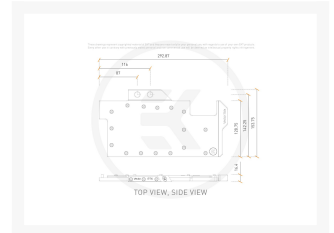
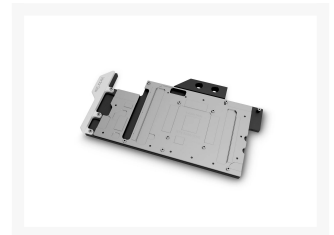
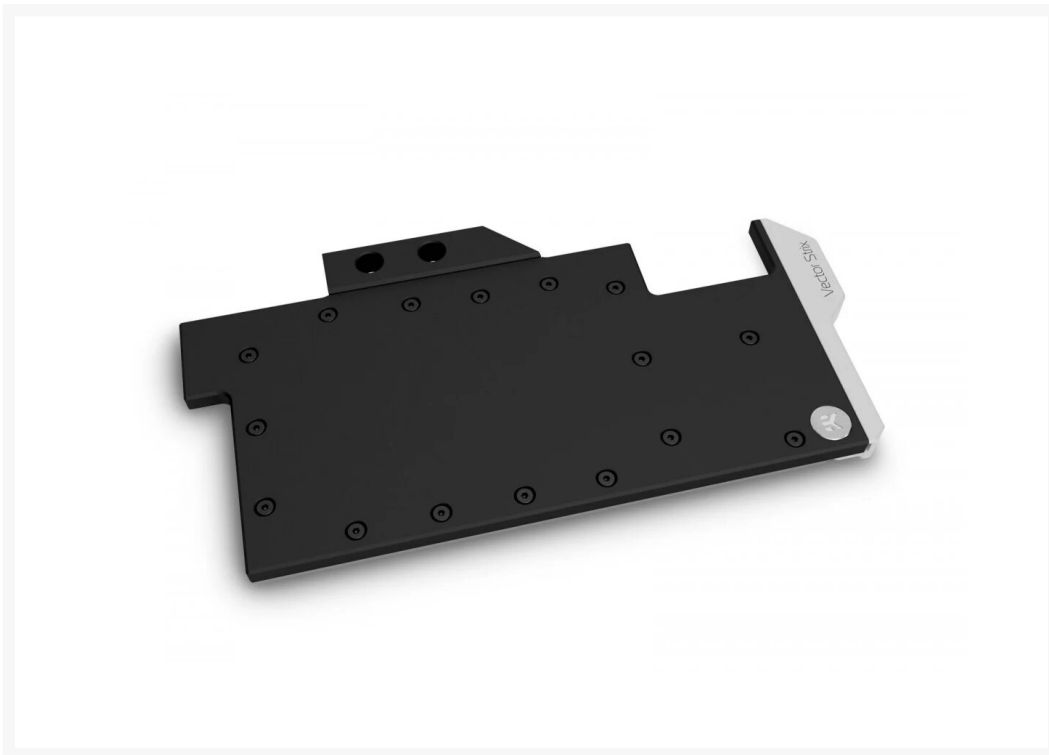




 **EK-Quantum Vector Strix
RTX 3080/3090 D-RGB -
Nickel + Acetal**

Special Price
\$142.99 was
\$188.99

Product Images



Short Description

This is the 2nd generation Vector GPU water block from the EK® Quantum Line, designed for ASUS® ROG Strix RTX 3080 and 3090 graphics cards based on the latest NVIDIA® Ampere™ architecture. The compatibility list is not final and other Zotac 3080 and 3090 graphics cards may get confirmed as compatible in the following days. For a precise compatibility match of this water block, we recommend you refer to the EK Cooling Configurator.

Description

This is the 2nd generation Vector GPU water block from the EK® Quantum Line, designed for ASUS® ROG Strix RTX 3080 and 3090 graphics cards based on the latest NVIDIA® Ampere™ architecture. For a precise compatibility match of this water block, we recommend you refer to the EK Cooling Configurator.

An EK water block for ROG STRIX RTX 3080 and 3090

EK-Quantum Vector Strix 3080/3090 D-RGB water block is compatible with ROG Strix RTX 3080 and 3090 graphics cards. The Vector water block actively cools the GPU, VRAM (on the front), MOSFETs, and chokes in the VRM (voltage regulation module). The water block contacts every single inductor in the VRM area to suppress any potential coil whine.

The Vector water block directly cools the GPU, VRAM, and the VRM (voltage regulation module) as a cooling liquid is channeled right over these critical areas. The water block is in contact with MOSFETs and chokes to maximize cooling and minimize the chances of coil whine.

These newly developed water blocks feature optimized flow paths that reduce hydrodynamic instabilities and vortexing (dead spots) inside of them. Additionally, this new design allows the terminal to be screwed directly onto the copper cold plate of the GPU block, making it more rigid and reducing the chances of damaging the water block.

The EK-Quantum Vector Series water blocks use an Open Split-Flow cooling engine design, which proved to be a superior solution for GPU water blocks. It is characterized by low hydraulic flow restriction, meaning it can be used with weaker water pumps or pumps running on low-speed settings, and still achieve top performance. The jet plate and fin structure geometry have been optimized to provide even flow distribution with minimal losses and optimal performance when used in any given coolant flow orientation.

Fin array is populated by 27 microfins with 0.5mm wide microchannels that provide optimal cooling performance, without unnecessary flow restrictions or clogging hazards.

The base of the block is CNC-machined out of nickel-plated electrolytic copper, while its top is CNC-machined out of durable black POM acetal. These 2nd generation Vector GPU water blocks also feature acetal terminals that match the top cover. The watertight sealing is ensured by high-quality EPDM O-rings, while brass standoffs are already pre-installed and allow for a safe and easy installation procedure.

Features

D-RGB lighting on EK-Quantum Vector Strix RTX 3080/3090 D-RGB water block

The aesthetic end-piece is housing the addressable D-RGB LED strip. This water block boasts a total of 12 individually addressable RGB LEDs, and it is compatible with popular RGB sync technologies from all major motherboard manufacturers. The arrow marking on the 3-pin D-RGB LED connector is to be aligned with the +5V marking on the D-RGB (addressable) header.

Backplate for the 3080/3090 water block

EK recommends the purchase of a retention backplate, especially for the 3090 models of graphics cards. The backplate improves the overall aesthetics of your graphics cards and also provides additional passive cooling for the GPU core, VRAM on the 3090 cards, and backside of the printed circuit board VRM section.

Specifications

Enclosed:

- EK-Quantum Vector Strix RTX 3080/3090 D-RGB series high-performance water block
- Mounting mechanism with screw-in brass standoffs
- Necessary mounting screws, nuts, and washers
- 2x Nickel plated brass plug G1/4"
- EK-Loop Multi Allen Key (6mm, 8mm, 9mm)
- Thermal pads
- Thermal grease EK-TIM Ectotherm (1g)

Technical Specification:

- Dimensions: (LxHxW) - 293x154x16.5mm
- D-RGB cable length: 500mm
- D-RGB LED count: 6
- D-RGB connector standard 3-pin (+5V, Data, Blocked, Ground)

Made in Slovenia - Europe!

PLEASE NOTE:

- Due to the immense variety of fittings/barbs available on the market, we guarantee compatibility only with EK fittings.
- Factory backplates are not compatible with this water block!
- Check your toolbox if you are missing this special Hex adapter for some of the screws.
- This product should NOT be installed with any aluminum Fluid Gaming parts!
- The use of specifically engineered coolants that contain corrosion, scale, and biological inhibitors is mandatory to prevent damage to your nickel plated water block! EK is offering a selection of such products in the coolants section.

Additional Info

	Nickel Acetal
	G1/4
	Nvidia GeForce

Additional Information

Brand	EK Waterblocks
SKU	EK-STRIX-RTX-3080-3090-DRGB-NA-D
Weight	3.0000
Color	Black
Vga	ASUS® ROG Strix RTX 3080 and 3090
Block GPU Type	Nvidia
Block Style	Nickel-Acetal
Vendor SKU/EAN	3831109832462
Special Price	\$142.99

