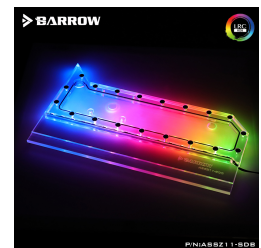




# BARROW Barrow Waterway Plate for ASUS Z11 Case - Guide Waterway Plate for Aurora

\$139.95

## Product Images

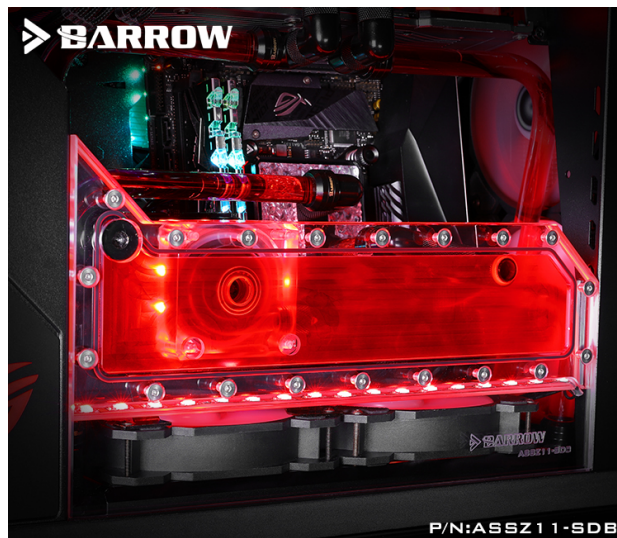


BARROW



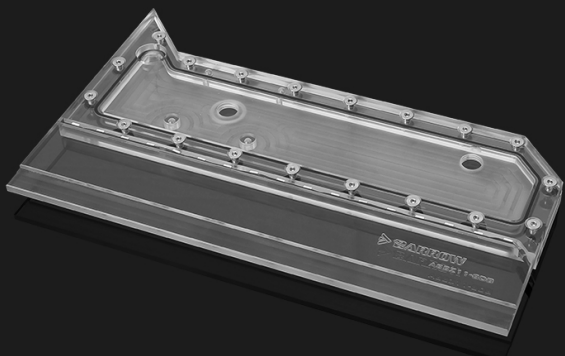
P/N:ASSZ11-SDB

BARROW



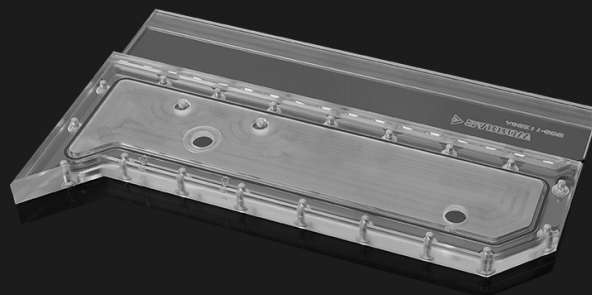
P/N:ASSZ11-SDB

BARROW



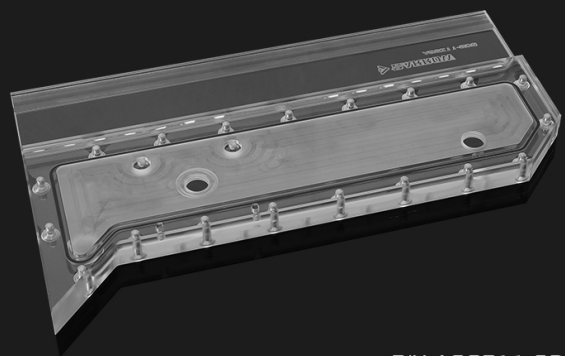
P/N:ASSZ11-SDB

BARROW



P/N:ASSZ11-SDB

BARROW



P/N:ASSZ11-SDB

## Short Description

---

This water channel board from Barrow, also known as a distributio plate, distro, or manifold, is made out of acrylic and is made specifically to fit the interior of the Asus Z11 Chassis.

## Description

---

This water channel board from Barrow, also known as a distributio plate, distro, or manifold, is made out of acrylic and is made specifically to fit the interior of the Asus Z11 Chassis.

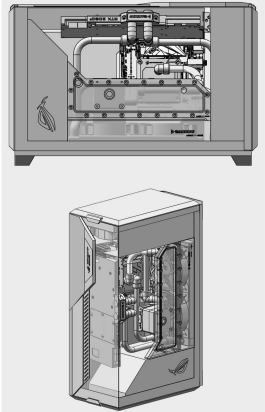
Please Note: The water channels within these waterway plates may update without notice. Overall demension of waterway will stay the same

## Features

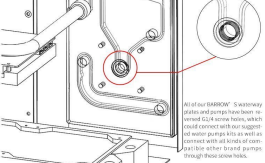
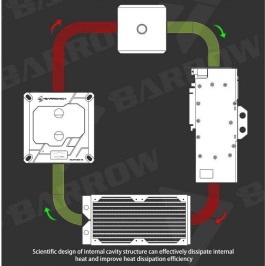
---

RECOMMEND LAYOUT WAY

This layout of the CPU block is only for reference, the actual layout should be based on their quantity and the inlet and outlet of CPU block.



PRODUCT CHARACTERISTICS



SUITABLE PC CASE

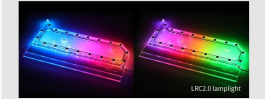


ASUS Z11

LIGHTING EFFECTS SHOW

LRC RGB FULL COLOR RGB LIGHTING CONTROL SYSTEM 2.0

Various 2-in-1 lamp with multi-colors, programmable static and dynamic lighting effects, that is, during the same time period of each lamp beads can be independently changed color. Such as removable RGB lighting components, according to the actual need to replace the lighting components.



CONTROL SYSTEM 2.0

LRC full color RGB lighting control system 2.0 includes BARROW 2.0 version manual controller, 16-way remote controller. Compatible with all BARROW™ 2.0 version of the RGB light-based components and other independent products and built-in lighting components.



LRC2.0 light effect can be synchronized with some of the motherboards' lighting effects through a conversion cable

COMPATIBLE WITH ABOVE MOTHERBOARDS 5V RGB DIMMING SYSTEM, ABOUT OTHER BRANDS AND COMPATIBLE INFORMATION, PLEASE REFER TO THE MANUFACTURERS' RELEVANT INFORMATION.

Purchase instruction

1. When installing the waterway plate, it is necessary to install and fix the waterway plate after the pipeline construction is completed, so as to avoid inconvenient installation of the waterway plate.
2. The pumps shall be installed with SP011-T PLUS pumps and screws attached to waterway plates.
3. This waterway plate is only applicable to ASUS Z11 case, not for others.
4. Suitable for single graphics cards to install, and it can be applicable to all length graphics cards.
5. Material: Acrylic.
6. It can be compatible with BARROW's all INTEL platform CPU blocks.
7. Compatible with two pcs of 34mm thickness 240 radiators.
8. Compatible with multiple models of motherboards with super compatibility.
9. Controller type: LRC 2.0 Aurora RGB lighting control system.
10. (The standard does not contain controller, if need, please purchase it separately.)
11. In case product appearance upgrade, without further notice, prevail in kind.



Channel board compatible motherboard model	
ROG STRIX Z390-E GAMING	ROG MAXIMUS XI GENE
ROG STRIX Z390-H GAMING	ROG Maximus XI Hero
ROG STRIX Z370-F GAMING	ROG Maximus XI Hero Black Ops
ROG MAXIMUS X HERO	ROG MAXIMUS VIII EXTREME/ASSEMBLY
ROG MAXIMUS X HERO (WI-FI AC)	PRIME Z370-A
ROG MAXIMUS IX HERO	PRIME Z390-A
ROG STRIX Z370-E GAMING	PRIME Z390-P
ROG STRIX Z370-H GAMING	TUF Z390-PRO GAMING
ROG STRIX Z370-F GAMING	TUF Z370-PRO GAMING
ROG STRIX B360-F GAMING	MAXIMUS VIII HERO
ROG STRIX Z270F GAMING	MAXIMUS VIII RANGER
ROG STRIX Z270E GAMING	Z170 PRO GAMING
ROG STRIX Z270H GAMING	Z170-AR
ROG MAXIMUS XI EXTREME	We recommend using the above models of motherboards and more compatible motherboards will be updating at any time.
Players can match different specifications of the offset transfer seat "TX360PZ", "TX360PZ-15", can achieve compatibility with any platform motherboard	

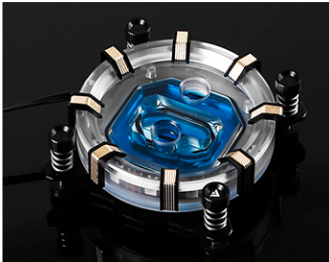
Compatible CPU block



P/N:LTYK3-04 V2



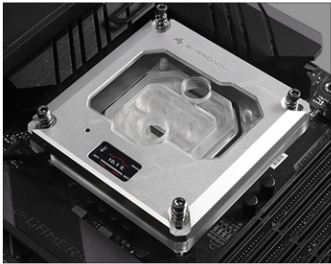
P/N:LTYKB-04N-V2



P/N:LTYKB-ARK



P/N:LTFHB-04N V2



P/N:FBLTFHI-04N V2

Recommended products		
Product name	Model	Number
Barrow 90°Rotary Adapter (Male to Female)	TWT90-v2.5	13
Barrow G1/4' 360°rotation offset adapter	TX360PZ	1
Barrow Male to Female Extender - 15mm	TNYZ-G15	2
Barrow Male to Female Extender - 20mm	TNYZ-G20	2
Barrow Compression Fitting - OD: 14mm Rigid Tubing	TLGYKN-14	10
Barrow 16 ways full function RGB and fan integrated controller (support to remote control and synchronization motherboard RGB)	DK301-16	1
Barrow 240MM Dabel-a series copper Radiator (Thick:30MM)	Dabel-30a 240	2
PWM LRC2.0 PLUS version PWM control speed 17w pump kit with special used for waterway plate through hole	SPB17-T PLUS	1
Barrow New Edition Water Cooling Liquid	SLYS-V2	1
Barrow 14*10 Normal temperature type PETG Tube (ID: 10MM, OD: 14MM, Length: 500MM)	PG1410-L	5
Barrow RGB full color speed regulation and lighting integrated fan with Hydraulic bearing PWM speed regulation	BF04-PR	5
Barrow Water discharge external Arch support 120mm	TCBJ-G	1
Barrow DDC bracket	TCBJ-DDF	1
The above list only shows the applicable joint specifications, players can choose other products according to the above product specifications		

## Additional Information

Brand	Barrow
SKU	ASSZ11-SDB
Weight	4.0000
Color	Clear
Reservoir Type	Distribution plate
Vendor SKU/EAN	6937826614484

