



BARROW Barrow Dabel-a series Radiator 40mm thick - 360mm

Special Price
\$51.96 was
\$64.95

Product Images



Short Description

BARROW Dabel-40a series of red copper water cooling standard height of 40MM, suitable for high heat

dissipation requirements of standard or large water cooler installation and use. The waterway is made of pure copper material, the brass of the water chamber and the fan mounting bracket are made of stainless steel. Has three kinds of length specifications, using 12 channel high density single wave finned tube design, design of +12 multi channel flat tube fin shape structure with high efficiency, heat transfer efficiency can provide better and more air contact area, help to improve and enhance the cooling capacity of cooling. Double sided double nozzle + bottom single nozzle combination of 5 interfaces, providing a wealth of expansion and practicality.

Description

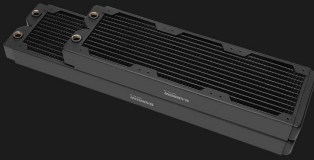
BARROW Dabel-40a series of red copper water cooling standard height of 40MM, suitable for high heat dissipation requirements of standard or large water cooler installation and use. The waterway is made of pure copper material, the brass of the water chamber and the fan mounting bracket are made of stainless steel. Has three kinds of length specifications, using 12 channel high density single wave finned tube design, design of +12 multi channel flat tube fin shape structure with high efficiency, heat transfer efficiency can provide better and more air contact area, help to improve and enhance the cooling capacity of cooling. Double sided double nozzle + bottom single nozzle combination of 5 interfaces, providing a wealth of expansion and practicality.

- Suitable for installation 12CM cooling fan
- Material: Copper + Brass + stainless steel
- Quantity: 1PCS / only
- Color: Black

Features

High density copper radiator for water cooling

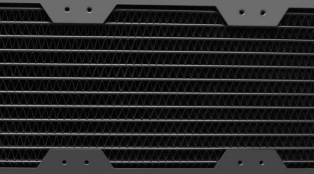
Heat sinking/High efficiency/Convenient/Fast/Durable



- Material: Copper+Brass
- Strong heat dissipation
- Safe and efficient
- Convenient and fast

01 Multi-channel circulation

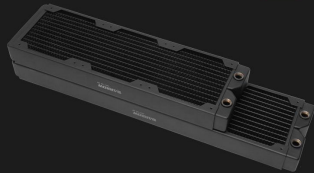
Multi-channel circulation
 | 12 Circulating waterways, by adding waterways, it directly improve the heat dissipation area of radiator and further improve the heat dissipation efficiency.



- Material: Copper+Brass
- 12 Circulating waterways
- Strong heat dissipation
- High density heat dissipation scales

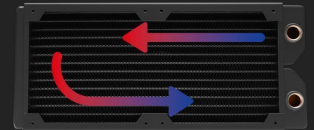
02 Large capacity chamber

It can conduct centralized heat dissipation for more coolant. |



03 Revolving heat dissipation passageway

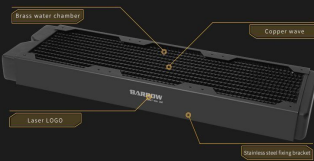
Revolving heat dissipation
 | It can increase the length of coolant flow in the radiator, and make the coolant can effective heat dissipation in the radiators.



- Circular channel
- heat dissipation
- 1:20MM golden ratio

04 Real materials

Real materials
 | It use brass and copper as the materials of water chamber | and radiating wave plate, the heat dissipation is steadily raised, and the radiator can be fixed steadily with stainless steel fixing bracket. The external laser LOGO is also used, which has both appearance and performance.



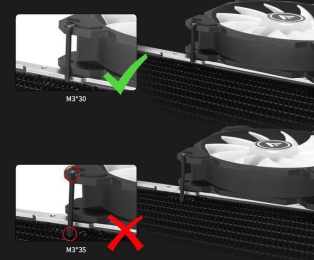
05 Various lengths could be chosed

Various lengths could be chosed
 | Various lengths can be selected to meet the various installation requirements of different players.



Screw's selection and Installation

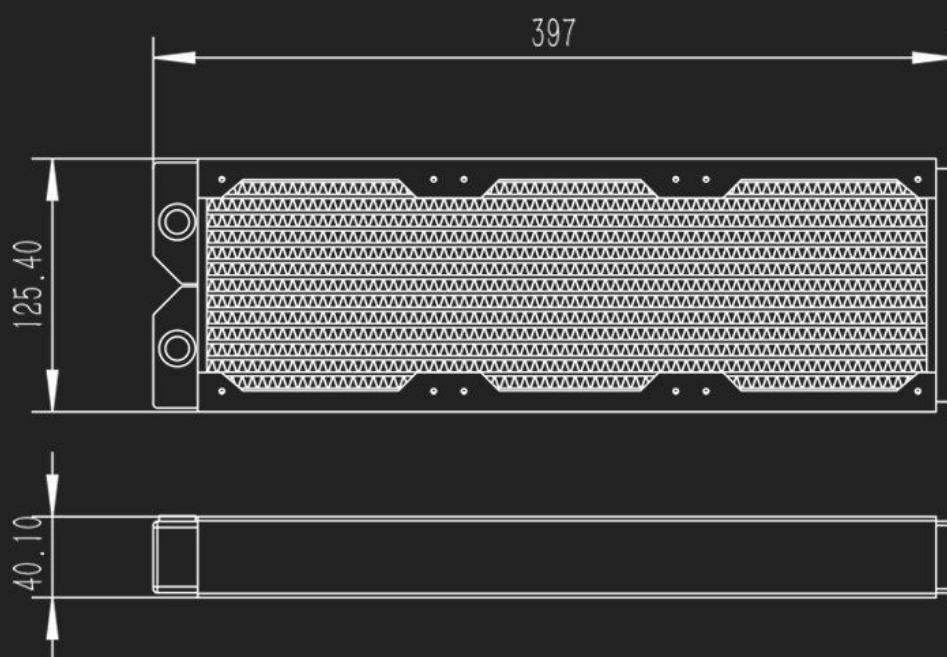
Put the fan and radiator well as shown, | and put the screw well too, then compare the length of the screw.



Radiator specification

Model	Dabel-30a 360
Material	Copper wave, Brass water chamber, Stainless steel fixing bracket
Internal structure	Copper flat tube, 12pcs 350mm*2mm*31mm
Fins	Density: 14pcs/inch; High: 31mm
Performance	Ultra-multiple radiating fins, Ultrastrong heat dissipation performance
Adaptable fans	Three 120 fans
Fixed screw hole of fans	12pcs/ one side
Connector	G1/4 Screw hole *2
Accessory	M3*6 Screw *24 M3*30 Screw *12 M3*35 Screw *12 2MM Hexagon wrench *1 M3*7*0.5 Black gaske *12
Size	397*125.4*40mm
Net weight	999g
Text pressure	0.32BAR
Capacity	310ml
Color	black

Appearance size



Additional Information

Brand	Barrow
SKU	DABEL-40A-360
Weight	3.5000
Color	Black
Radiator Size	360 (3 x 120mm)
Radiator Thickness	40mm
Vendor SKU/EAN	6937826614347
Special Price	\$51.96

