

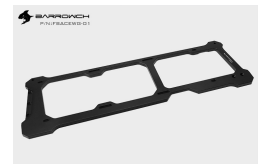


BARROWCH

Barrowch WING Cooling Performance Enhancement Kit (Expanding Radiator Kit for the Mobula Chassis) Black

\$144.95

Product Images





Short Description

Barrow and Barrowch was established in 2010. It is an export-oriented and domestically-manufactured manufacturing enterprise specializing in computer and industrial water cooling equipment and precision hardware components. The Barrowch WING cooling performance enhancement kit is a combo stand and an expansion radiator kit. This kit is made out of very robust and impressive 8mm thick solid aluminum cnc'ed parts. This stand/radiator expansion kit is made strictly and only for the BarrowCH Mobula open air chassis. The kit includes 2 side frames that each hold its own radiator and the 3 adapter blocks need for full assembly. The advanced design concept and internal structure are deeply loved by domestic and foreign enthusiasts of water cooling players!

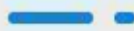
Description

Barrow and Barrowch was established in 2010. It is an export-oriented and domestically-manufactured manufacturing enterprise specializing in computer and industrial water cooling equipment and precision hardware components. The Barrowch WING cooling performance enhancement kit is a combo stand and an expansion radiator kit. This kit is made out of very robust and impressive 8mm thick solid aluminum cnc'ed parts. This stand/radiator expansion kit is made strictly and only for the BarrowCH Mobula open air chassis. The kit includes 2 side frames that each hold its own radiator and the 3 adapter blocks need for full assembly. The advanced design concept and internal structure are deeply loved by domestic and foreign enthusiasts of water cooling players!

PLEASE NOTE: Other products in the detail picture, such as the Mobula chassis, the Motherboard, HDD/SSD, Graphics Card, CPU, Reservoir, Water Blocks, Tubes, Fittings, Radiators and other hardware, is just for reference and to show the completed assembly of this open air system.

Purchase information

购买须知



1. The adapter block with an “extremely frozen shark” side should be facing the rear of the case to correctly install the radiator enhancement kit;
2. After installing the power supply, the radiator enhancement kit can be installed;
3. The 90-degree power extension cable should be connected to the power supply before installing the radiator enhancement kit;
4. When installing the back pipe, the installation sequence should be followed from inside to outside;
5. The product sold on this page is a cooling and dissipating heat enhancement kit, excluding the PC case and other display hardware ;
6. This kit can only be used in combination with BARROWCH's Mobula chassis. It is not supported for use alone or with chassis of other brands and other models;
7. Product appearance structure will be upgraded without a prior notice, and the material object prevails.

BARROWCH

Continuous efficiency, fast shipping, professional

wing cooling performance enhancement kit

10" 8 radiator for Micro ATX computer case (400-450mm)

Choose originality, optimization and upgrading, 3,000+ hours experience

Non-destructive

Installation

Easy to use

Efficient

Easy to install

Convenient handle design

2024 New

As the radiator is installed, the handle can be used to hold the radiator in place, making it easier to install and remove.

Nondestructive installation

2024 New

Only by removing the original case support frame, the radiator installation of the radiator enhancement kit is non-destructive.

Multi radiators hanging

2024 New

Through the installation of the enhancement kit, the case can be added with two pieces of radiator, which can increase the cooling capacity.

Support multi-thickness radiator

2024 New

Adjustable enhancement kit can be compatible with 15.5mm, 25mm radiator.

8" mechanical elevation

2024 New

When the water is placed vertically, there is about 8" and to the center of gravity, which can prevent the case from falling.

It has playability

2024 New

The radiator is not fixed to the case, but can be moved freely, which can be used to adjust the radiator position.

Brand interpretation

2024 New

The radiator is not fixed to the case, but can be moved freely, which can be used to adjust the radiator position.

8mm aluminum alloy CNC

2024 New

The radiator is made of 8mm aluminum alloy, which is processed by CNC, and it is more durable and has better heat dissipation.

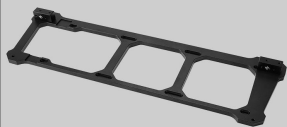
Overall piping drawing

2024 New

The radiator is made of 8mm aluminum alloy, which is processed by CNC, and it is more durable and has better heat dissipation.

4

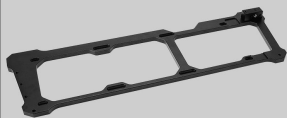
4/25/24



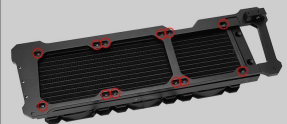
1. The included screws should be used to secure the adapter block to the enhancement kit 1 in the direction shown in the drawing.



2. The radiator should be fixed on the enhancement kit 1 in the direction shown in the drawing.



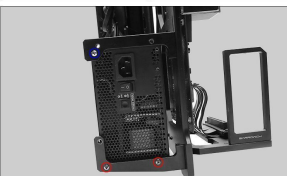
3. The adapter block should be fixed to the enhancement kit 2 in the direction shown in the drawing.



4. The radiator should be fixed on the enhancement kit 2 in the direction shown in the drawing.



5. It is necessary to remove the screws marked in red in the drawing and remove the support of the case.



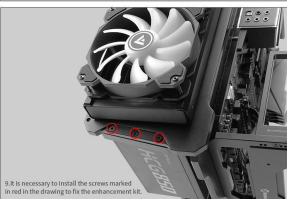
6. The screws marked in red in the drawing need to be removed (only the screws marked in blue in the drawing are retained).



7. It is necessary to install the screws marked in red in the drawing (use the screws for power adapter block) and connect the 90-degree power extension cable.



8. It is necessary to install the screws marked in red in the drawing to fix the radiator enhancement kit with the case.



9. It is necessary to install the screws marked in red in the drawing to fix the enhancement kit.

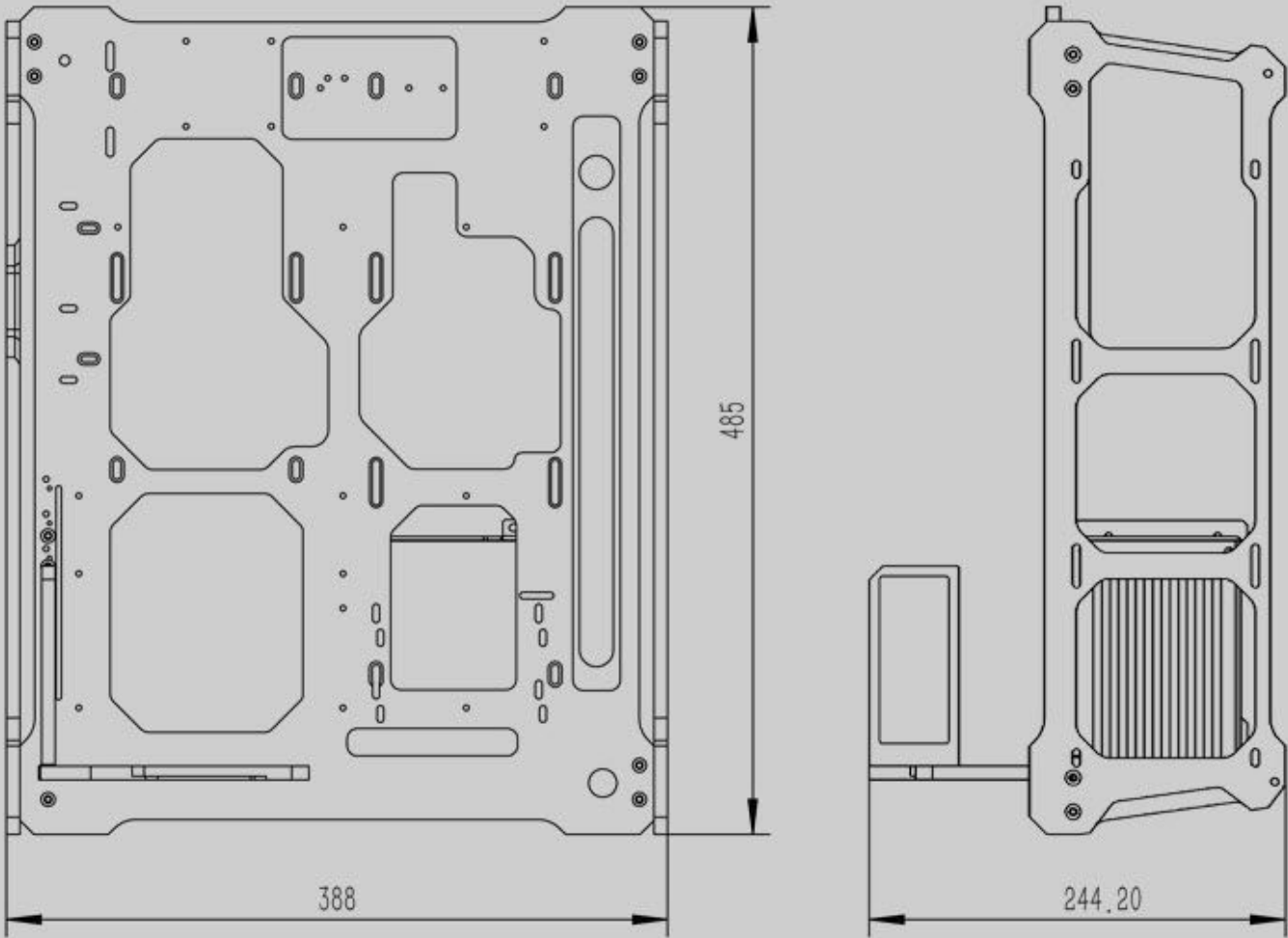


10. The installation is complete.

Appearance size

外观尺寸

The dimension picture shows the overall size of the Mobula PC case



Additional Information

Brand	Barrowch
SKU	FBACEWG-01-BK
Weight	5.0000
Color	Black
Case Accessory Type	Stands/Feet
Vendor SKU/EAN	6937826663864

