



Crucial 250GB MX500 2.5" Internal SATA SSD

\$59.95

Product Images



Short Description

Add up to 250GB of storage capacity to a notebook or desktop computer with the MX500 2.5" Internal SATA SSD from Crucial. This solid-state drive fits in the system's 2.5" drive bay and comes with a 7 to 9.5mm spacer for compatibility with bigger bays.

Description

Add up to 250GB of storage capacity to a notebook or desktop computer with the MX500 2.5" Internal SATA SSD from Crucial. This solid-state drive fits in the system's 2.5" drive bay and comes with a 7 to 9.5mm spacer for compatibility with bigger bays. Crucial has equipped the MX500 SSD with a SATA Interface, Silicon Motion SM2258 controller, and Micron 3D TLC NAND Flash technology to deliver up to 560 MB/s sequential reads and 510 MB/s sequential writes. For securing sensitive data, AES-256 encryption and Opal 2.0 are available. Additionally, included along with the drive is Acronis True Image software, which provides an easy-to-use backup solution.



Start your system in
seconds



Capacities up
to 2TB



Easy installation



5-year limited
warranty



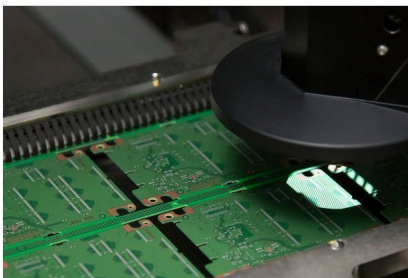
Fly through everything you do

Start your system in seconds, load files almost instantly, and accelerate the most demanding applications with the Crucial MX500. Our Dynamic Write Acceleration technology uses an adaptable pool of high-speed, single-level cell flash memory to generate blistering speeds.



Store up to 2TB of data

Save massive amounts of photos, music, and videos comfortably and securely. With fast access to your media, creations, and designs, you're ready to share at the speed of your life.



Enjoy the efficiency of next-gen Micron® 3D NAND

Our cutting-edge components are engineered from start to finish for efficiency. As a result, the Crucial MX500 uses only a minimal amount of power and still delivers a high price-to-performance ratio – without needing a financing plan to pay for it. Experience a faster, cooler, and quieter computer in your home or business. You'll wonder how you ever put up with a hard drive.



Upgrade with a drive you can count on

With thousands of hours of pre-release validation, dozens of SSD qualification tests, and a heritage of award-winning SSDs, the Crucial MX500 has been thoroughly tried, tested, and proven. Secure your most important files on a drive with established dependability and the advanced features MX-series SSDs are known for.



Install with confidence

For many people, opening a computer and transferring data seems terrifying. That's why we've made it easy in the step-by-step [Crucial SSD Install Guide](#). Check it out before you buy, then install your own SSD quickly with everything transferred over successfully and hassle-free.



Micron® quality – a higher level of reliability.

As a brand of Micron, one of the largest flash storage manufacturers in the world, the Crucial MX500 is backed by the same quality and engineering innovation that has produced some of the world's most advanced memory and storage technologies for more than 35 years. Split-second speeds, lasting reliability, and a decades-long legacy – upgrading with the Crucial MX500 gives you the best combination of quality, performance, and security. It's worth it.



Supported Features

- Dynamic Write Acceleration
- Redundant Array of Independent NAND (RAIN)
- Multistep Data Integrity Algorithm
- Adaptive Thermal Protection
- Integrated Power Loss Immunity
- Active Garbage Collection
- TRIM Support
- Self-Monitoring and Reporting Technology (SMART)
- Error Correction Code (ECC)
- Device Sleep Support

Specifications

Crucial MX500 Specs

Storage

Drive Capacity 250.00 GB

Performance

Interface SATA III (6 Gb/s)

Random Read Speed 95,000 IOPS

Random Write Speed 90,000 IOPS

Sequential Read Speed 560 MB/s

Sequential Write Speed 510 MB/s

Physical

Drive Type SSD

Form Factor 2.5" (7 mm)

Flash Controller Silicon Motion SM2258

Reliability / Data Integrity

Encryption *None*

Endurance (Total Bytes Written) 180 TB

Mean Time Between Failures (MTBF) 1.8 Million Hours

Environmental

Operating Temperature 32 to 158°F / 0 to 70°C

General

Warranty Length Limited 5-Year Warranty

Packaging Info

Package Weight 0.17 lb

Box Dimensions (LxWxH) 5.2 x 5.1 x 0.7"

Additional Information

| | |
|---------------------|----------------|
| Brand | Crucial |
| SKU | CT250MX500SSD1 |
| Weight | 1.5000 |
| Storage Type | SSD |
| Storage Form Factor | 2.5" |
| Storage Capacity | 250 GB |

