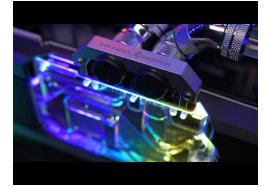




Corsair Hydro X Series XD5 RGB Pump/Reservoir Combo — Black

\$154.99

Product Images





*Requires CORSAIR iCUE Commander PRO or Lighting Node PRO (sold separately)



TEN INDIVIDUALLY ADDRESSABLE RGB LEDs

Illuminate your reservoir with customizable RGB lighting through CORSAIR iCUE software.*

INCLUDED IN-LOOP TEMPERATURE SENSOR

Provides real-time coolant temperatures from inside your cooling loop when connected to a CORSAIR iCUE Controller.*



*sold separately



RUBBERIZED MOUNTING SYSTEM

Reduces pump vibration and noise.

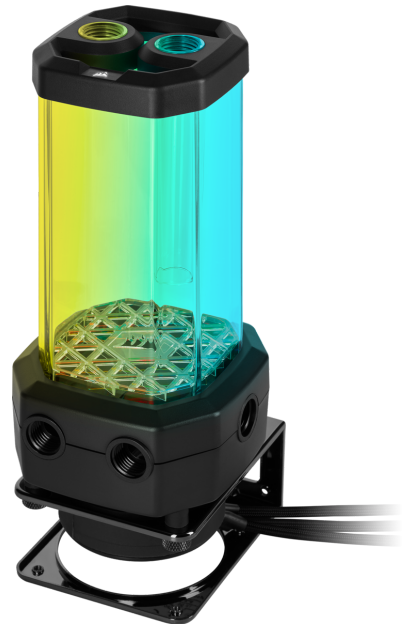
Includes



120mm and 140mm Fan Mounts



24-PIN PSU Jumper Bridge





Short Description

The CORSAIR Hydro X Series XD5 RGB Pump/Reservoir Combo features a high-performance D5 PWM pump, integrated RGB lighting, and in-loop temperature sensor to drive the world's most demanding custom cooling systems.

Description

The CORSAIR Hydro X Series XD5 RGB Pump/Reservoir Combo features a high-performance D5 PWM pump,

integrated RGB lighting, and in-loop temperature sensor to drive the world's most demanding custom cooling systems.

CORSAIR XD5 RGB PUMP/RESERVOIR COMBO

YOUR CUSTOM COOLING SYSTEM, INCLUDING COOLANT

CONTROLLED COOLING FROM EVERY ANGLE

A high-performance, 4-pin, 12V PWM-purged, controlled fan pump to deliver the perfect flow baseline for your loop.



VIVID RGB LIGHTING

For individually addressable, fan-mounted RGB LEDs, get up your coolant with striking, customizable RGB lighting. Make a CORSAIR XD5 Customized Coolant Reservoir and Pump or CORSAIR XD5 Customized Coolant Reservoir and Fan Pump shines in your PC's compatible chassis, including metal, acrylic, tempered, and more.



YOUR COOLANT ON DISPLAY

The integrated 200ml reservoir with an anti-vibration mount puts your custom cooling system's coolant front and center, with clear acrylic design and an integrated flipout that makes filling, flushing and topping off coolant easy.



IN-LOOP TEMPERATURE MONITORING

Integrated iCCM temperature sensor provides real-time coolant temperatures from inside your cooling loop when connected to a CORSAIR iCCM COMMANDER PRO or COMMANDER CORE (sold separately).



INCLUDED ACCESSORIES GO AN EXTRA MILE

Additional options allow you to start your custom, individualizing your loop components for easy and safe filling.

Control lighting effects directly on compatible motherboards or using an included 10-pin addressable cable or connect to a CORSAIR iCCM Commander (sold separately) and provide CORSAIR iCCM software for customizable and sync RGB lighting across all your iCCM compatible products.



MULTIPLE INSTALLATION BRACKETS

Easily mount the XD5 RGB Pump/Reservoir to a 100mm or 140mm fan mount or fan for wide chassis compatibility.



RUBBERIZED MOUNTING SYSTEM

Reduces pump vibrations and noise on your custom mounting loop to zero, not noise.



INDIVIDUALLY SLEEVED CABLING

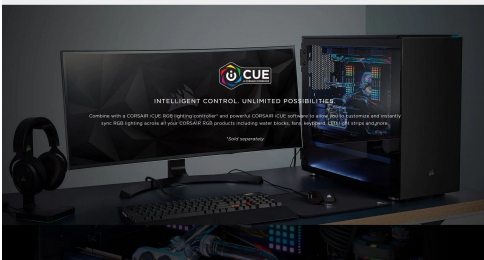
All the XD5 RGB Pump/Reservoir's cabling is individually sleeved to prevent snagging, ensuring your custom cooling system build looks great.



INTELLIGENT CONTROL. UNLIMITED POSSIBILITIES.

Control with a CORSAIR iCCM RGB lighting controller* and provide CORSAIR iCCM Commander (sold separately) and iCCM software for customizable and sync RGB lighting across all your iCCM compatible products including some boards, fans, HEDDERS, LEDs, and more.

*Sold separately.



Features

CONTROLLED COOLING FROM EVERY ANGLE

A high-performance Xylem D5 PWM pump controlled via PWM to deliver the perfect flow balance for your loop.

VIVID RGB LIGHTING

Ten individually addressable top-mounted RGB LEDs light up your coolant with stunning customizable RGB lighting. Add a CORSAIR iCUE Controller (sold separately) and powerful CORSAIR iCUE software to customize and sync RGB lighting across all your iCUE-compatible products including water blocks, fans, keyboard, and more.

YOUR COOLANT ON DISPLAY

The integrated 330ml reservoir with an anti-vortex insert puts your custom cooling system's coolant front-and-center, with stunning angular design and an integrated fillport that makes filling, flushing and topping-off coolant easy.

IN-LOOP TEMPERATURE MONITORING

Integrated G1/4 temperature sensor provides real-time coolant temperatures from inside your cooling loop when connected to a CORSAIR iCUE COMMANDER PRO or COMMANDER CORE (sold separately).

INCLUDED ACCESSORIES GO AN EXTRA MILE

Jumper cable allows you to start your pump without powering your main components, for easy and safe filling.

Control lighting effects directly on compatible motherboards by using an included 5V ARGB adapter cable or connect to a CORSAIR iCUE Controller (sold separately) and powerful CORSAIR iCUE software to customize and sync RGB lighting across all your iCUE-compatible products.

MULTIPLE INSTALLATION BRACKETS

Easily mount the XD5 RGB Pump/Reservoir to a 120mm or 140mm fan mount or fan for wide chassis compatibility.

RUBBERIZED MOUNTING SYSTEM

Reduces pump vibrations and noise, so your custom cooling loop is seen, not heard.

INDIVIDUALLY SLEEVED CABLING

All the XD5 RGB Pump/Reservoir's cabling is individually sleeved in premium paracord, ensuring your custom cooled system build looks great.

Specifications

Product Type: Pump / Reservoir Combo

Warranty: 3 years

Port Thread: G1/4" BSPP

Fluid Chamber Material: Nylon

Pump Type: Xylem D5 PWM

Liquid Capacity: 330ml

Flow Rate: 800L/h at 2.1m pressure head (1500L/H theoretical max)

Speed: 4800RPM

PWM: 20-100%

Operating Temperature: 60°C coolant temperature

Color: Black

Lighting: RGB

Compatibility - Material: Only mix with other copper / brass products

iCUE Compatibility: CORSAIR Commander PRO / Lighting Node PRO

Voltage: 12V

Power draw: 30W

Cable Type: 4-pin Molex (AMP Mate-N-Lok) - 45cm cable length

Connectivity: 4-pin fan header (KK254)- 45cm cable length

Package Contents:

- XD5 Pump Res Combo
- 120 mm fan bracket
- 140 mm fan bracket
- ATX Jumper Bridge
- G1/4" Temperature Sensor
- 3 x G1/4" stop plugs
- Mounting screws
- RGB adapter cable
- Plug tool
- Quick Start Guide

Additional Information

Brand	Corsair
SKU	CX-9040006-WW
Weight	3.0000
Color	Black
Reservoir Type	Tube Res
Pump Type	Xylem D5 PWM

