



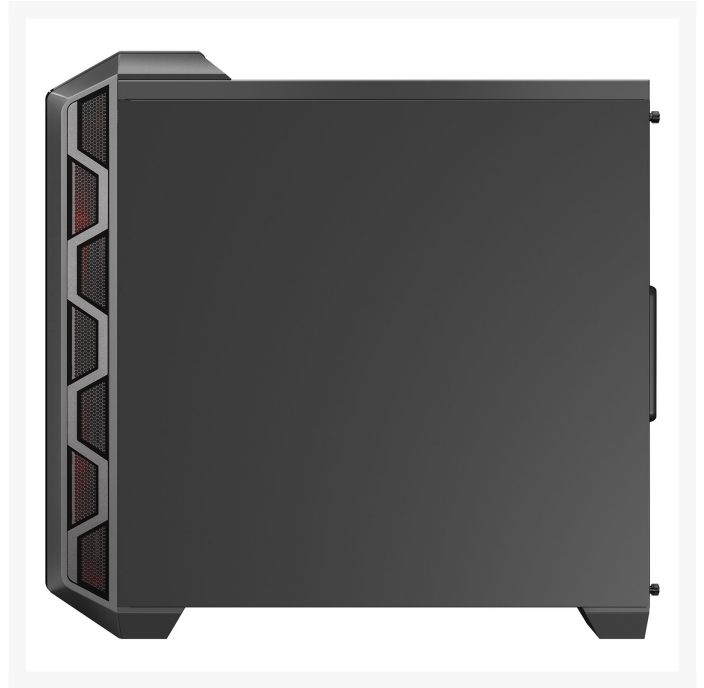
# Cooler Master MasterCase H500 Mid Tower Desktop Case MCM- H500-IGNN-S01

\$129.95

## Product Images







## Short Description

---

The MasterCase H500 Mid Tower Desktop Case from Cooler Master houses all of your system's components and lets you display them with lighting coming from RGB LED fans along with a tempered glass side panel. The MasterCase H500 can accommodate up to four 2.5" drives, and two of the 2.5" bays can support 3.5" storage drives. With a mid-sized design, the case can hold motherboards up to ATX in size and has seven expansion slots. For connectivity, it offers two USB 2.0 and two USB 3.0 ports as well as a set of 3.5mm audio jacks.

## Description

---

The MasterCase H500 Mid Tower Desktop Case from Cooler Master houses all of your system's components and lets you display them with lighting coming from RGB LED fans along with a tempered glass side panel. The MasterCase H500 can accommodate up to four 2.5" drives, and two of the 2.5" bays can support 3.5" storage drives. With a mid-sized design, the case can hold motherboards up to ATX in size and has seven expansion slots. For connectivity, it offers two USB 2.0 and two USB 3.0 ports as well as a set of 3.5mm audio jacks.

To help keep the air flowing through system at a constant rate, Cooler Master has equipped the case with two 200mm fans as well as one 120mm fan in the rear. Additional cooling is possible using the included mesh front panel and a user-supplied liquid cooling system. A tempered glass panel is also provided for the front. Furthermore, dust filters are mounted to the top, front, and bottom of the MasterCase H500 desktop case.

## MASTERCASE H500 ARGB

A performance- and aesthetics-optimized mid tower case ideal for your new gaming rig. The MasterCase H500 has two 200mm ARGB fans for gorgeous lighting effects, which can be controlled by either the included controller or compatible motherboard software. Both transparent and mesh front panels are included for your preference. A top-mounted handle makes transport a breeze.



## MESH & TRANSPARENT PANELS INCLUDED

Each choice of front panels decides whether the build will excel at ruthless airflow performance or head-turning aesthetics. Of course, the mesh is the ideal choice for providing the pre-installed fans with high volumes of fresh air. The transparent panel, on the other hand, parades those fans in crystal clear view.



## DUAL 200MM ARGB FANS

The iconic, addressable RGB fans are the core of the H-Series in design and function, capable of operating quietly while moving high volumes of air due to their size.

## ARGB LIGHTING SYSTEM

The pre-installed ARGB fans can be managed by either the motherboard or an included controller, connected by the included splitter, to create a comprehensive ARGB lighting system.

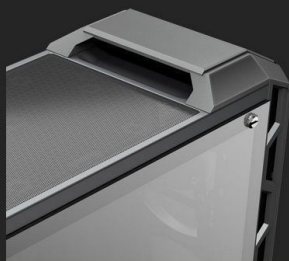


## TEMPERED GLASS SIDE PANEL

Gaming hardware, cooling components, and the pure pride of the builder is shown in panoramic view through an edge-to-edge tempered glass side panel.

## CASE HANDLE

Hidden on the top panel, in front of the mesh ventilation, is an integrated handle for enhanced utility.



## ARGB CONTROLLER

The small ARGB Controller is a mini-sized controller that allows your Addressable RGB devices such as fans and LED strips to be powered and controlled even in PC systems without an A-RGB capable motherboard.

The controller comes with 14 lighting presets to make full use of the Addressable LEDs in the system and also allows to be completely switched off by long pressing its button.

It is also possible to attach any external 2pin button to it to be able to switch presets without having to open the system. For ease of use, Cooler Master allows the RESET button to be optionally connected to the controller and used as an external ARGB preset switch button.





## Features

---

### Key Features

- Steel Frame & Plastic Front Bezel
- 2 x 2.5"/3.5" Drive Bays
- 2 x 2.5" Drive Bays
- 7 x Expansion Slots
- Support for Liquid Cooling Systems
- Supports GPUs up to 16.1" Long
- Supports CPU Coolers up to 6.5" Tall
- Cable Management System
- Multiple Removable Dust Filters
- Tempered Glass Left-Side Panel
  
- Managed by an included RGB Controller, two 200mm RGB fans come pre-installed with support for one optional 200mm fan on the top panel
- Light-grey tinted tempered glass side panel for showcasing your build with optional (RGB) lighting
- Cable and PSU cover for clean system builds
- Top magnetic filter allows hot air to flow outside the system for optimal thermal support
- Raised front panel covers a portion of the top panel to act as a handle (supporting up to 44 lb / 20 kg) for transport

## Specifications

---

### Cooler Master MasterCase H500 Specs

#### Compatibility

Motherboard Support	ATX, Micro-ATX, Mini-ITX
External Drive Bays	<i>None</i>
Internal Drive Bays	2 x 2.5/3.5" 2 x 2.5"
Expansion Slots	7 x Full Height
Maximum GPU Length	16.1" / 408.94 mm
CPU Cooler Height	6.5" / 165.10 mm
Supported PSU Size	ATX
Maximum PSU Length	7.1" / 180.34 mm

## Cooling

	3 x 120 mm Or 2 x 140 mm Or 2 x 200 mm
Fan Mounting (Front)	
Fan Mounting (Rear)	1 x 120 mm
Fan Mounting (Side)	<i>None</i>
	2 x 120 mm Or 2 x 140 mm Or 1 x 200 mm
Fan Mounting (Top)	
Fan Mounting (Bottom)	<i>None</i>
Fans Included (Front)	2 x 200 mm LED
Fans Included (Rear)	1 x 120 mm
Fans Included (Top)	<i>None</i>
Maximum Radiator Size (Front)	360 mm
Maximum Radiator Size (Rear)	120 mm
Maximum Radiator Size (Top)	240 mm
Fan Mounting (Internal)	<i>None</i>
Fan Controller Included	Yes
Filter Locations	Bottom, Front, Top

## I/O

Connections	2 x USB Type-A (USB 2.0) 2 x USB Type-A (USB 3.1 / USB 3.2 Gen 1)
Audio Connections	1 x 3.5 mm Input 1 x 3.5 mm Output
Display Connections	<i>None</i>

## Physical

Windowed Panel	Yes
Material	Tempered Glass, Steel, Plastic, Acrylic
Built-In Lighting	No
Security	<i>None</i>

Cable Management Space 1.18" / 30 mm  
Dimensions (W x H x D) 8.98 x 20.67 x 19.76" / 228 x 525 x 502 mm  
Packaging Info  
Package Weight 23.4 lb  
Box Dimensions (LxWxH) 24 x 22.25 x 11.5"

## Additional Information

---

Brand	Cooler Master
SKU	MCM-H500-IGNN-S01
Weight	30.0000
Color	Black
Chassis Form Factor	Mid-Tower
Side Panel	Window
Motherboard Support	ATX, E-ATX, Micro ATX, Mini ITX
Material	Steel

