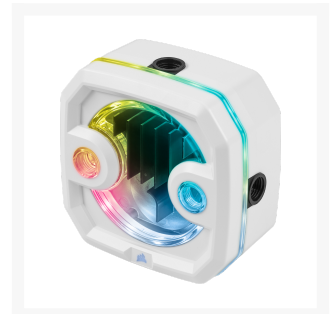




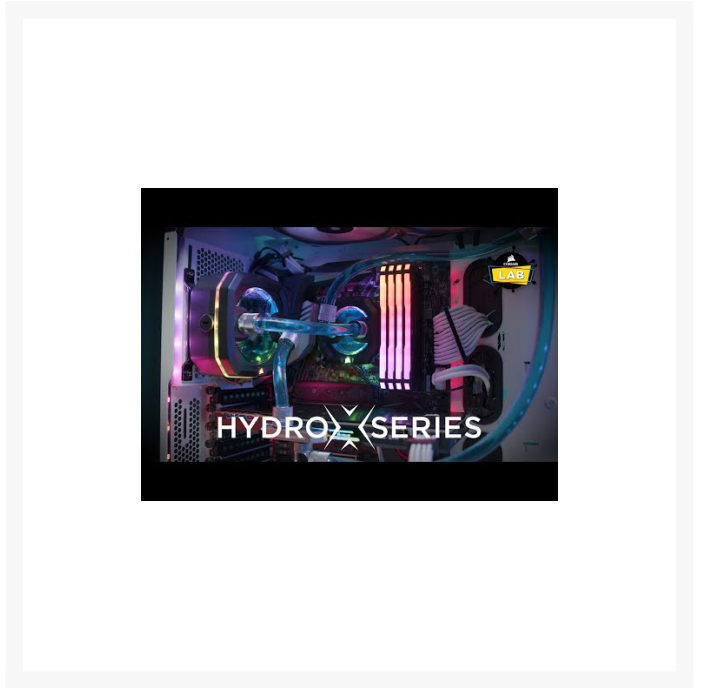
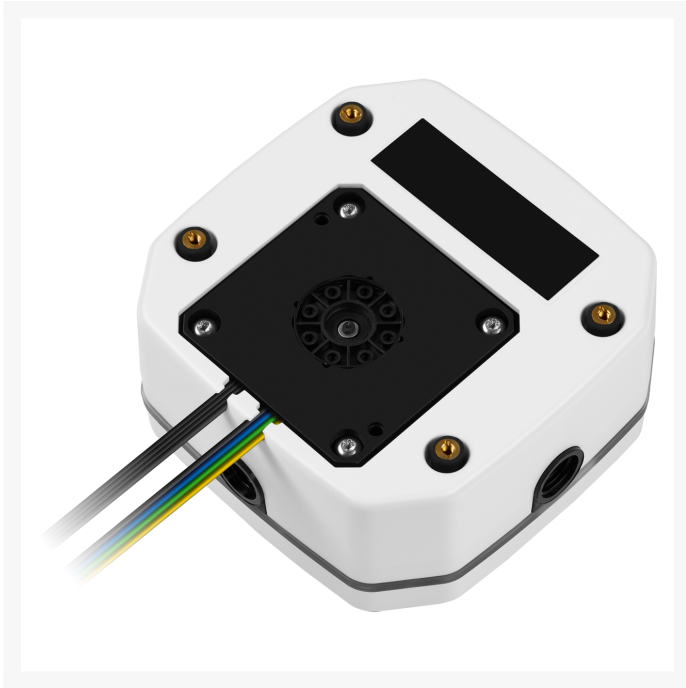
Corsair Hydro X Series XD3 RGB Pump/Reservoir Combo — White

\$154.99

Product Images







Short Description

The CORSAIR Hydro X Series XD5 RGB Pump/Reservoir Combo features a high-performance D5 PWM pump, integrated RGB lighting with a titanium matte white finish, and an in-loop temperature sensor to drive the world's most demanding custom cooling systems.

Description

The CORSAIR Hydro X Series XD5 RGB Pump/Reservoir Combo features a high-performance D5 PWM pump, integrated RGB lighting with a titanium matte white finish, and an in-loop temperature sensor to drive the world's most demanding custom cooling systems.



Compatible with CORSAIR iCUE

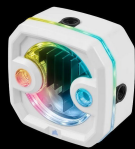


XDR3 RGB PUMP/RESERVOIR COMBO

YOUR CUSTOM COOLING SYSTEM IN LIVING COLOR

CONTROLLED COOLING WHEREVER YOU NEED IT

A high performance Super DDC Pump being controlled via PWM to deliver the perfect flow speeds for your setup.



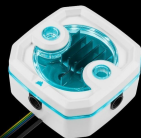
DYNAMIC MULTI-ZONE RGB PUMP HEAD

6 individually addressable RGB LEDs light up the pump head to provide stunning, customizable lighting effects to match your build.



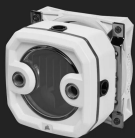
COMPACT FORM FACTOR

The XDR3's compact size and unique form factor makes most builds, opening up the most compact custom cooling setups.



YOUR COOLANT ON DISPLAY

The integrated 100ml reservoir puts your custom cooling system's coolant right on display, with lighting control and an integrated fill port for easy filling, flushing and headlight coolant easy.



TITANIUM MATTE WHITE FINISH

Matches the premium finishes of other elite CORSAIR products in your setup.



IN-LOOP TEMPERATURE MONITORING

Integrated CLM temperature sensor provides real time coolant temperatures from your custom cooling loop when connected via CORSAIR iCUE COMMAND CENTER or CORSAIR iCUE ONE software.

INCLUDED ACCESSORIES GO AN EXTRA MILE

Jump cables allow you to start your pump without plugging your PC into power, for easy and safe filling. Connecting without plugging in computer peripherals by using an included 3V 500mA adapter plug or powered by CORSAIR iCUE COMMAND CENTER and powered CORSAIR iCUE software to maintain and auto-fill liquid levels on your custom computer products.



RUBBERIZED MOUNTING SYSTEM

Includes pump, reservoir and more, so your custom cooling loop is done with ease.



MULTIPLE INSTALLATION BRACKETS

Easily mount the XDR3 RGB Pump/Reservoir to a 150mm or 180mm fan mount or fan hub for easy compatibility.



INTELLIGENT CONTROL. UNLIMITED POSSIBILITIES.

Control via CORSAIR iCUE RGB lighting controller and powered CORSAIR iCUE software to allow you to customize and manage your RGB lighting across all your CORSAIR RGB products including water blocks, pump heads, LED fans and more.

Features

Package Contents:

XD3 Pump Res Combo
120 mm fan bracket
140 mm fan bracket
Perpendicular mounting bracket
ATX Jumper Bridge
G1/4" Temperature Sensor
3 x G1/4" stop plugs
mounting screws
RGB adapter cable
Plug tool
Quick Start Guide

CORSAIR Hydro X Series products are compatible with the following coolants:

Coolant Brand	Coolant Model	Recommendation
CORSAIR	XL5 Performance Coolant	Preferred
CORSAIR	XL8 Performance Coolant	Preferred
Aquacomputer	Double Protect Ultra	Compatible
Coolaboratory	Liquid Coolant Pro	Compatible
EK	Cryofuel	Compatible
Jingway	Iceland X	Compatible
Koolance	LIQ-702	Compatible
Liquid.Cool	CFX Opaque	Compatible
Mayhems	IDC	Compatible
Mayhems	Pastel	Compatible
Mayhems	X1	Compatible
Mayhems	XT-1 Nuke	Compatible
Mayhems	XT-1	Compatible
Nanoxia	Cooling Fluid Pro	Compatible
Nanoxia	Cooling Fluid Pro Opaque	Compatible

Primochill	TRUE.	Compatible
Thermaltake	C1000	Compatible
XSPC	EC6	Compatible
XSPC	ECX	Compatible
Alphacool	Eiswasser	Not compatible
Alphacool	Eiswasser Pastel	Not compatible
Alphacool	Cape Kelvin Catcher (CKC)	Not compatible
Aquatuning	AT-Protect	Not compatible
EK	Cryofuel Solid	Not compatible
EK	Cryofuel Mystic Fog	Not compatible
Jingway	Galaxy	Not compatible
Mayhems	SFX Aurora	Not compatible
Phobya	ZuperZero Xtreme	Not compatible
Primochill	VUE	Not compatible
Swiftech	HydrX	Not compatible
Thermaltake	C1000 Opaque	Not compatible
Thermaltake	Coolant 1000	Not compatible
XSPC	EC6 Pastel	Not compatible
UFO Technologies	Cryo-Chillz	Not compatible

Specifications

Product Type
 Pump / Reservoir Combo
 Warranty
 3 Year
 Port Thread
 G1/4" BSPP
 Pump Type
 Xylem DDC 3.2 PWM9
 Liquid Capacity
 180ml

Flow Rate
380L/h at 2.1m pressure head
Speed
4800 RPM
PWM
20-100%
Fluid Chamber Material
Nylon
Operating Temperature
60°C coolant temperature
Color
WHITE
Lighting
RGB
Compatibility - Material
Only mix with other copper / brass products
iCUE Compatibility
CORSAIR Commander PRO / Lighting Node PRO
Voltage
12V
Power draw
18W
Cable Type
4-pin Molex (AMP Mate-N-Lok) - 53cm cable length
Connectivity
4-pin fan header (KK254)- 68cm cable length

Additional Information

Brand	Corsair
SKU	CX-9040001-WW
Weight	3.5000
Color	White
Reservoir Type	Free Standing Tank
Tube Res Length	175mm
Pump Type	Xylem DDC PWM

