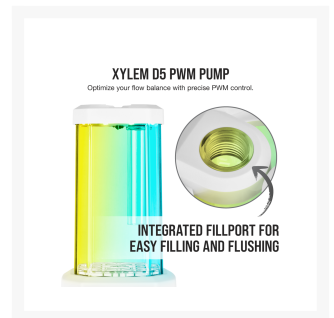




Corsair Hydro X Series XD5 RGB Pump/Reservoir Combo — White

\$154.99

Product Images





*Requires CORSAIR iCUE Commander PRO or Lighting Node PRO (sold separately)



TEN INDIVIDUALLY ADDRESSABLE RGB LEDs

Illuminate your reservoir with customizable RGB lighting through CORSAIR iCUE software.*

INCLUDED IN-LOOP TEMPERATURE SENSOR

Provides real-time coolant temperatures from inside your cooling loop when connected to a CORSAIR iCUE Controller.*



*sold separately



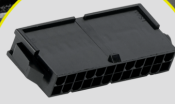
RUBBERIZED MOUNTING SYSTEM

Reduces pump vibration and noise.

Includes



120mm and 140mm Fan Mounts



24-PIN PSU Jumper Bridge

RUBBERIZED MOUNTING SYSTEM

Reduces pump vibration and noise.

Includes



120mm and 140mm Fan Mounts



24-PIN PSU Jumper Bridge



Short Description

The CORSAIR Hydro X Series XD5 RGB Pump/Reservoir Combo features a high-performance D5 PWM pump, integrated RGB lighting, and in-loop temperature sensor to drive the world's most demanding custom cooling systems.

Description

The CORSAIR Hydro X Series XD5 RGB Pump/Reservoir Combo features a high-performance D5 PWM pump,

integrated RGB lighting, and in-loop temperature sensor to drive the world's most demanding custom cooling systems.



**CORSAIR X06 RGB
PUMP/RESERVOIR COMBO**

YOUR COOLANT RESERVOIR IS IN LIVING COLOR



**CONTROLLED COOLING FROM
EVERY ANGLE**

A high-performance, 3000 RPM pump controller via PWM to deliver the perfect flow balance for your loop.

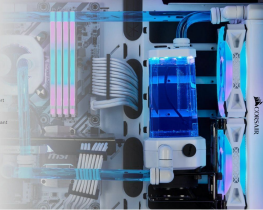


VIVID RGB LIGHTING

Get individually addressable, five-reservoir RGB LED lighting and control with Gaming Performance Mode lighting. Add a CORSAIR CUE Controller (sold separately) and address CORSAIR CUE software to customize and sync RGB lighting across all your CUE-compatible products, including your favorite, high-end PC gear.

YOUR COOLANT ON DISPLAY

The integrated 320ml reservoir with an anti-vortex insert and your custom cooling system is visible from every angle, with a viewing window design that also minimizes liquid that means being. Audible and loop-up-off coolant level.



**IN-LOOP TEMPERATURE
MONITORING**

Integrate CUE temperature sensor (sold separately) into your cooling loop. Monitor temperatures from inside your cooling loop when connected to a CORSAIR CUE COMMANDER PRO or COMMANDER CORE (sold separately).

**INCLUDED ACCESSORIES GO AN
EXTRA MILE**

Jumpstart cable allows you to start your pump without powering your main components, for easy and safe filling. Quick lighting effects directly on controller. Modularity by using an included ST-AUDIO expansion cable or connector to a CORSAIR CUE Controller (sold separately) and connect CORSAIR CUE software to customize and sync RGB lighting across all your CUE-compatible products.



**MULTIPLE INSTALLATION
BRACKETS**

Quickly mount the X06 RGB Pump/Reservoir to a 120mm or 140mm fan mount or fan for easy chassis connecting.



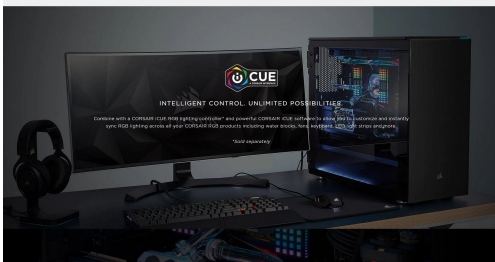
RUBBERIZED MOUNTING SYSTEM

Reduce pump vibrations and noise in your custom cooling loop to keep you heard.



INDIVIDUALLY SLEEVED CABLING

All the X06 RGB Pump/Reservoir's cabling is individually sleeved to prevent damage, ensuring your custom cooling system built looks great.



INTELLIGENT CONTROL. UNLIMITED POSSIBILITIES.

Control with a CORSAIR CUE RGB lighting controller and connect CORSAIR CUE software to bring life to customize and modify your RGB lighting across all your CUE-compatible products including your favorite, high-end PC gear. Sync everything.

RGB lighting

Features

CONTROLLED COOLING FROM EVERY ANGLE

A high-performance Xylem D5 PWM pump controlled via PWM to deliver the perfect flow balance for your loop.

VIVID RGB LIGHTING

Ten individually addressable top-mounted RGB LEDs light up your coolant with stunning customizable RGB lighting. Add a CORSAIR iCUE Controller (sold separately) and powerful CORSAIR iCUE software to customize and sync RGB lighting across all your iCUE-compatible products including water blocks, fans, keyboard, and more.

YOUR COOLANT ON DISPLAY

The integrated 330ml reservoir with an anti-vortex insert puts your custom cooling system's coolant front-and-center, with stunning angular design and an integrated fillport that makes filling, flushing and topping-off coolant easy.

IN-LOOP TEMPERATURE MONITORING

Integrated G1/4 temperature sensor provides real-time coolant temperatures from inside your cooling loop when connected to a CORSAIR iCUE COMMANDER PRO or COMMANDER CORE (sold separately).

INCLUDED ACCESSORIES GO AN EXTRA MILE

Jumper cable allows you to start your pump without powering your main components, for easy and safe filling.

Control lighting effects directly on compatible motherboards by using an included 5V ARGB adapter cable or connect to a CORSAIR iCUE Controller (sold separately) and powerful CORSAIR iCUE software to customize and sync RGB lighting across all your iCUE-compatible products.

MULTIPLE INSTALLATION BRACKETS

Easily mount the XD5 RGB Pump/Reservoir to a 120mm or 140mm fan mount or fan for wide chassis compatibility.

RUBBERIZED MOUNTING SYSTEM

Reduces pump vibrations and noise, so your custom cooling loop is seen, not heard.

INDIVIDUALLY SLEEVED CABLING

All the XD5 RGB Pump/Reservoir's cabling is individually sleeved in premium paracord, ensuring your custom cooled system build looks great.

Specifications

Product Type: Pump / Reservoir Combo

Warranty: 3 years

Port Thread: G1/4" BSPP

Fluid Chamber Material: Nylon

Pump Type: Xylem D5 PWM

Liquid Capacity: 330ml

Flow Rate: 800L/h at 2.1m pressure head (1500L/H theoretical max)

Speed: 4800RPM

PWM: 20-100%

Operating Temperature: 60°C coolant temperature

Color: Black

Lighting: RGB

Compatibility - Material: Only mix with other copper / brass products

iCUE Compatibility: CORSAIR Commander PRO / Lighting Node PRO

Voltage: 12V

Power draw: 30W

Cable Type: 4-pin Molex (AMP Mate-N-Lok) - 45cm cable length

Connectivity: 4-pin fan header (KK254)- 45cm cable length

Package Contents:

- XD5 Pump Res Combo
- 120 mm fan bracket
- 140 mm fan bracket
- ATX Jumper Bridge
- G1/4" Temperature Sensor
- 3 x G1/4" stop plugs
- Mounting screws
- RGB adapter cable
- Plug tool
- Quick Start Guide

Additional Information

Brand	Corsair
SKU	CX-9040007-WW
Weight	3.0000
Color	White
Reservoir Type	Tube Res
Pump Type	Xylem D5 PWM

