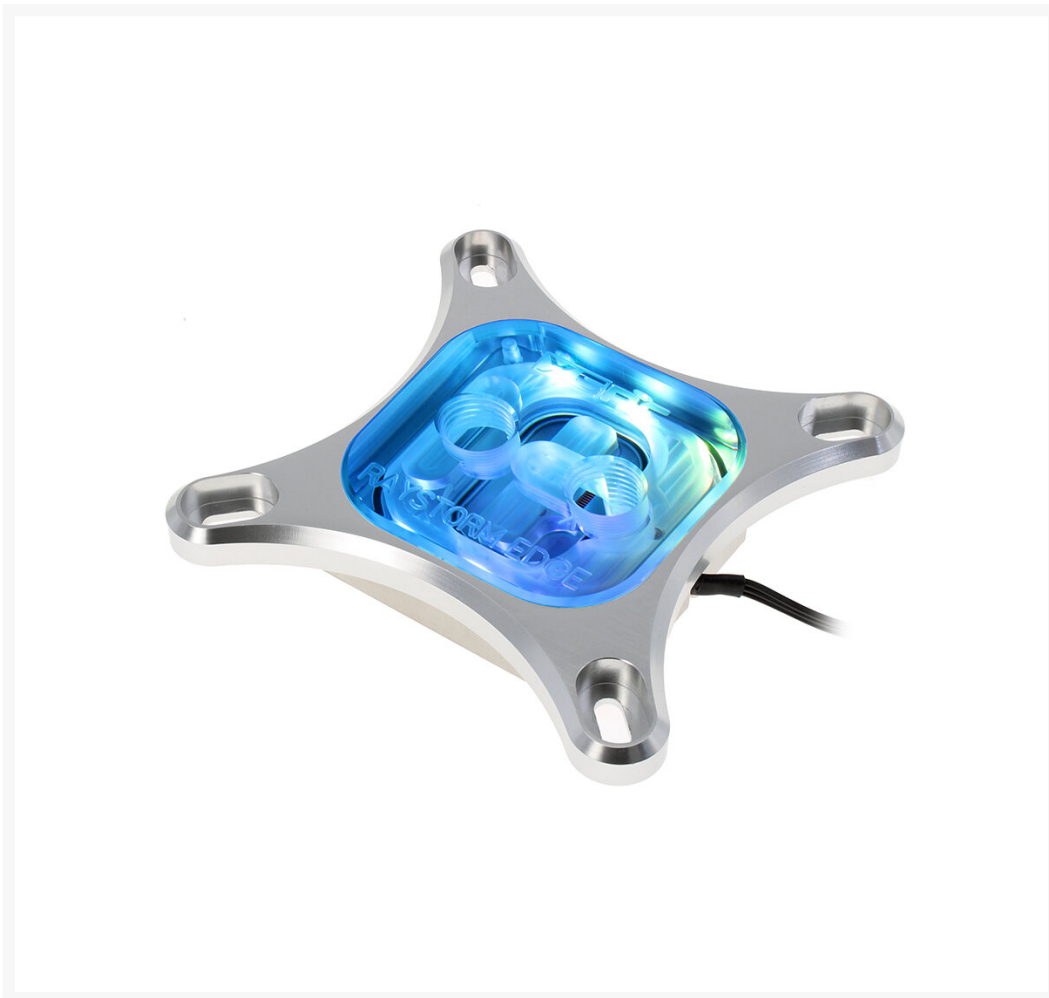




XSPC RayStorm EDGE aRGB CPU Waterblock Intel - Sliver

Special Price
\$70.96 was
~~\$89.95~~

Product Images





Short Description

The new RayStorm EDGE is a complete redesign of the RayStorm series that improves on the performance of our RayStorm Pro and Neo blocks.

The RayStorm EDGE is our first three layer CPU waterblock, where the jet plate covers the whole copper base plate. This gives the appearance of a nickel plated block, without the performance drop that can come with nickel plating.

Description

The new RayStorm EDGE is a complete redesign of the RayStorm series that improves on the performance of our RayStorm Pro and Neo blocks.

The RayStorm EDGE is our first three layer CPU waterblock, where the jet plate covers the whole copper base plate. This gives the appearance of a nickel plated block, without the performance drop that can come with nickel plating.

Each waterblock is carefully machined from pure copper, stainless steel and high quality acrylic, while the hold down bracket is CNC machined from a solid piece of aluminium. As with all XSPC products, no aluminium is used in the coolant flow path.

The RayStorm EDGE offers outstanding performance, integrated Digital Addressable RGB lighting, and thanks to our new mounting system, it's even easier than ever to install.



Features

Details:

- High performance CNC copper base
- High quality acrylic top
- Solid aluminium bracket
- (Digital) 3Pin 5v aRGB Lighting
- G1/4" threads
- Compatible with most compression fittings

Supports Intel Sockets: LGA2066, LGA2011, LGA2011-3, LGA1150, LGA1151, LGA1155, LGA1156, LGA1200,

LGA1700

Supplied with mounting hardware, LGA 115x/1200 backplate, integrated custom aRGB strip + needle connector, and K3 thermal paste.

RGB Compatibility:

- All 3Pin 5v Addressable RGB Motherboards, Controllers and Hubs including...
- Asus AURA Sync (3Pin 5v Headers only)
- Gigabyte RGB Fusion (3Pin 5v Headers only)
- MSI Mystic Light Sync (3Pin 5v Headers only)

NOTE: Do not attempt to plug the 3Pin 5V aRGB cable into anything other than an aRGB 5V Motherboard header pin, Controller or Hub. Each aRGB strip is tested prior to shipping, user damage by misuse is not covered under warranty.

Specifications

Included:

- XSPC Raystorm EDGE aRGB CPU Waterblock
- INTEL Mounting Plate
- INTEL Mounting Hardware
- INTEL LGA 115x/1200/1700 Backplate
- XSPC K3 Thermal Paste
- 3Pin Needle connector for aRGB

Additional Information

Brand	XSPC
SKU	XSPC-RAYSTORM-EDGE-INTEL-S
Weight	0.5000
Color	Black
CPU Series	Intel 115X/2011/2011-3/2066/1200
Block CPU Type	Intel
Block Style	Copper-Plexi
Vendor SKU/EAN	5060596650886
Special Price	\$70.96

