



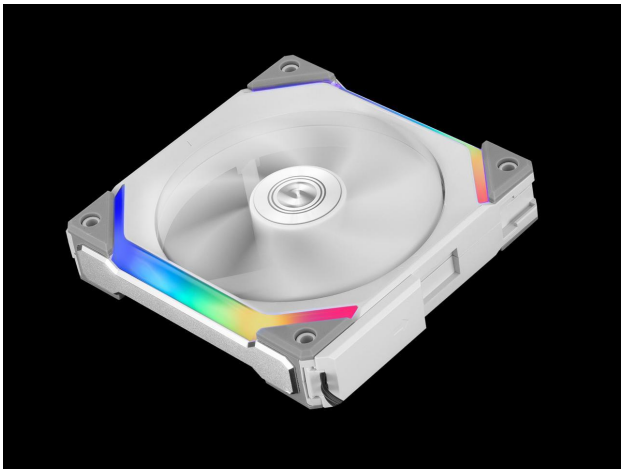
Lian Li UNI FAN SL140

Quick-connect, Interlocking Tracts Fluid Dynamic Bearing 140mm aRGB Case Fan - 2-Pack - White

Special Price
\$69.99 was
\$79.99

Product Images





Short Description

Lian Li has launched the UNI FAN SL140 combining style, performance, and creativity, the white and the black UNI FAN SL140. These are fans that feature a unique, modular interlocking system, which allows users to couple up to 16 fans together (under one controller) with a few simple actions. A special cable module with pin-to-pin contact points also means less wiring to worry about. Oh, and it can even sync up to 32 LEDs per fan for RGB goodness. This is a 2-Pack of fans with the controller!

Description

Lian Li has launched the UNI FAN SL140 combining style, performance, and creativity, the white and the black UNI FAN SL140. These are fans that feature a unique, modular interlocking system, which allows users to couple up to 16 fans together (under one controller) with a few simple actions. A special cable module with pin-to-pin contact points also means less wiring to worry about. Oh, and it can even sync up to 32 LEDs per fan for RGB goodness. This is a 2-Pack of fans with the controller!

LIAN LI Industrial Co. Ltd., a leading manufacturer of aluminum chassis and PC accessories, announces the

UNI FAN SL140, an innovative approach to reducing cables by interlocking and daisy-chaining the fans. Designed as 140mm high static pressure PWM fans with addressable RGB LEDs, the UNI FAN SL140 has a newly patented quick-connect daisy-chaining style system that simplifies cable management and mounting efforts. With up to 16 fans (4 sets of 4) under one fan controller, users can easily create an adapted profile to match their fan speed and synchronized lighting effect needs via the highly intuitive L-Connect software. Available in black or white, the UNI FAN SL120 offers a new premium look with lighting effects that do not compromise on performance.



L-Connect

Focused on giving users more control over fan functionality, the clean and intuitive interface of the L-Connect software provides instant speed and RGB light management for individual fans or simultaneous control over all 4 clusters of fans. With 5 fan speed profiles, 14 lighting effects, and control over each effect's color, brightness, direction, and speed, L-Connect allows full customization of the look and feel of the system. Alternatively, users can choose to sync with the motherboard software via the simple toggle of a switch. Interconnect to Simplify

Say goodbye to cable clutter and time wasted tightening screws with the new interlocking mechanism of the UNI FAN SL140. Designed to slide and lock, the interlocking mechanism and quick-connect PINs ensure that structural rigidity and power is sustained along the cluster of fans. With its modular approach, power to the fan blades and LEDs is provided by an easy sliding connector, meaning only two cables are necessary to power up to 4 fans. Connected to a hub that can host up to 4 clusters, this means up to 16 fans require only 8 cables, compared to 32 with traditional fans, making cable management a breeze. And since the cluster acts as one, the sturdiness means fewer screws are required to mount the fans securely to the system, saving precious time and avoiding awkward screwing positions during the installation process.

Made to Last and Made with Style

Each PWM high static pressure UNI FAN SL140 offers great performance with speeds ranging between 800 to 1500 rpm at low noise levels thanks to the fluid dynamic bearing technology which provides a thin layer of fluid to support the load of the fan blades. In addition, each fan features a magnet centered at the back to reduce vibrations and noise while in operation. While providing sufficient airflow, the 32 addressable LEDs in each fan provide a smooth customizable lighting effect that shines through the diffuser on each side of the fan, bringing a unique style to PC builds.

** It must be noted that the controller included in the pack of 2 is required to operate the UNI FAN SL140.



BLACK
PWM
120MM



AVAILABLE IN TWO LED FAN COLORS
RGB
SOLID

UNPRECEDENTED QUIETNESS
UNPRECEDENTED EFFICIENCY



OPTIMIZE YOUR PC GAMING
UNPRECEDENTED EFFICIENCY

PERFORM THE COOLEST WORK
THAT ALL PARTS



MORE DURABLE, EXTREMELY SILENT
A 100% duty cycle fan with 100,000+ hours of life expectancy



A DEDICATED UNI FAN CONTROLLER IS THE ONLY FAN CONTROLLER IN THE WORLD
OPTIONAL 10V 3-pin CABLE KIT



Specifications

Model	UNI FAN SL140
Fan Dimension	140 X 140 X 25 (mm)
Rated Voltage	DC 12V(FAN) & 5V(LED)
Fan Speed	800~1500RPM
Max. Air Pressure	1.93mmH2O
Max. Air Flow	78.5CFM
Acoustical Noise (Min-Max.)	17dB ~ 30dB
Locked Current	>= 10mA
Bearing Type	Fluid Dynamic Bearing(FDB)
Operation Voltage	DC 12V & 5V
Start-up Voltage	DC 6.0V
Input Current	0.18A(FAN) / 0.6A (LED)
Input Power	3.5Watt

Additional Information

Brand	Lian-Li
SKU	UF-SL140-2W-D
Weight	2.0000
Color	White
Fan Dimensions	140mm
Fan Width	25mm
Fan Connection	4-Pin PWM
Fan Voltage	12 VDC
Fan RPM	1500
Fan CFM	78
Fan Noise (dB)	30
LED Color	RGB
Special Price	\$69.99

