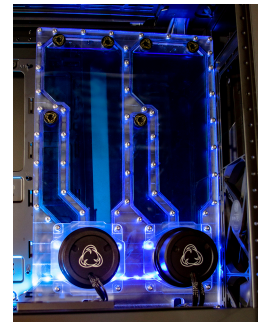


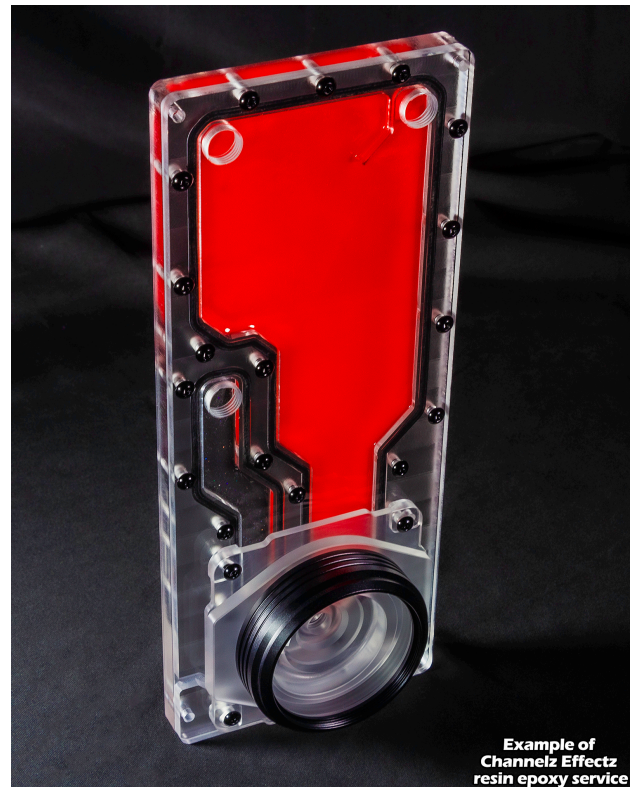
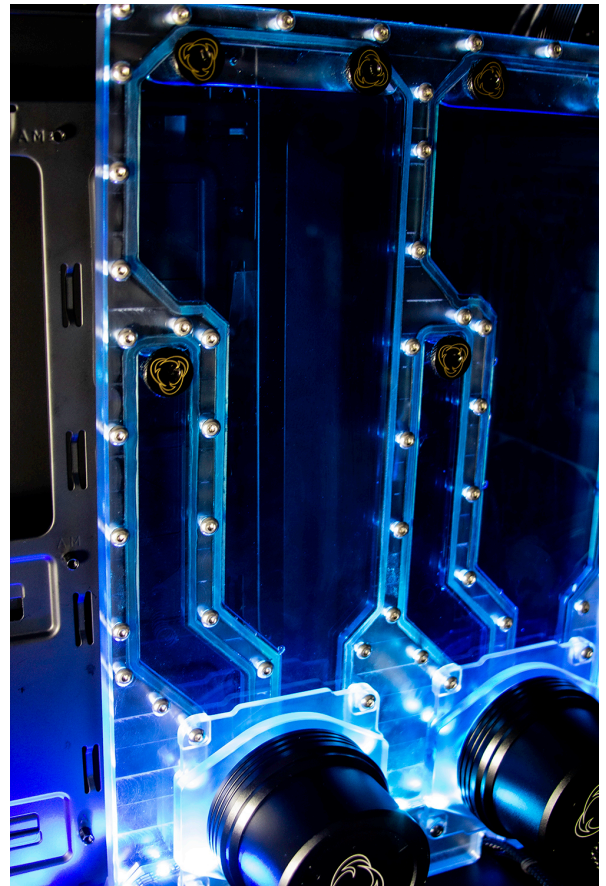
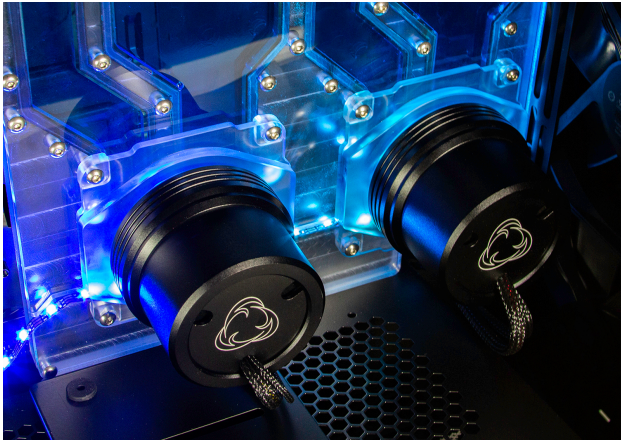


# Channelz™ Dual D5/DDC Reservoir

\$399.99

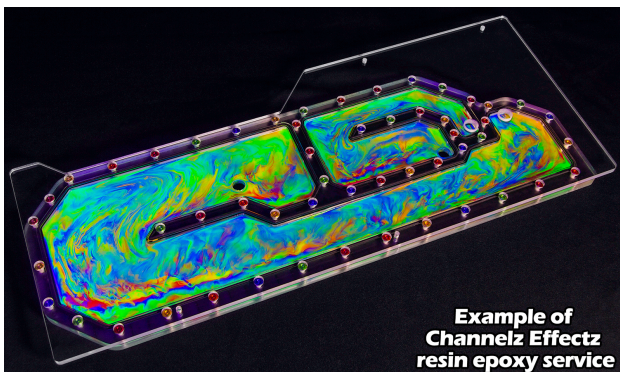
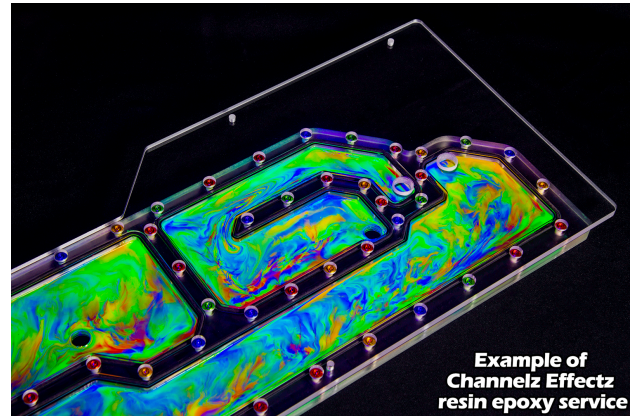
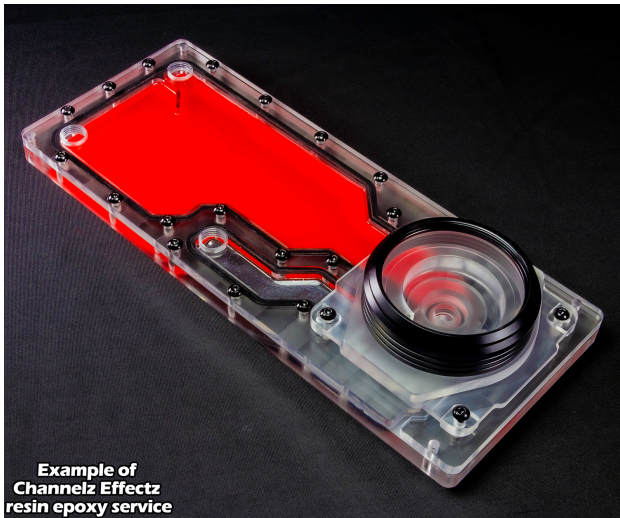
## Product Images





Example of  
Channelz Effectz  
resin epoxy service





## Short Description

Designed by Singularity Computers and manufactured in the USA by Performance PCs.



This is a Dual Loop Distribution Plate with two separate reservoirs and D5/DDC pump tops. It is designed as a dual pump reservoir combo to fit into larger cases, some mid towers but mostly full towers (see the dimensions under the specifications below). It comes included with a D5/DDC Retention Ring which attaches the pump to the Distribution plate. It has 3 ports per loop, 1 inlet, 1 outlet and a fill port. It comes included with a DRGB Addressable LED strip.

## Description

---

Designed by Singularity Computers and manufactured in the USA by Performance PCs.



This is a Dual Loop Distribution Plate with two separate reservoirs and D5 pump tops. It is designed as a dual pump reservoir combo to fit into larger cases, some mid towers but mostly full towers (see the dimensions under the specifications below). It comes included with a D5 Retention Ring which attaches the pump to the Distribution plate. It has 3 ports per loop, 1 inlet, 1 outlet and a fill port.

It comes included with a DRGB Addressable LED strip.

NOTE: D5 Pump and Cover Not Included.

## Channelz Effectz Service

Tired of all that colored Coolant clogging up your loop but don't want to stick with some boring old clear coolant? Well Performance-PCs has you taken care of with their new Channelz Effectz Service! This service is a great way to add some color to your Channelz distribution plate without clogging your loop with pastel or mica filled coolants. We use an epoxy resin mixture that is safe for your loop and will certainly help that build POP. There is 30 different super vivid color options to choose from and we even added the ability for you to mix colors to give your loop its own style.

## Features

---

Installation:

Install anywhere it fits into larger mid towers or full tower cases using the included x4 M4 22mm Button Head Hex Bolts and M4 Nuts. Check the above dimensions to make sure that it fits into your case. 4 mounting holes need to be drilled into the case with a 4.5mm drill bit. Use the distribution plate as a template for the mounting holes.

## Specifications

---

Specifications:



Material: Clear Cast Acrylic.  
Fasteners: Stainless Steel Silver.  
Gaskets: Silicone Black.  
O-rings: Silicone Black and Clear.  
Stop Fittings: Brass Black Powder coat.  
Ports: x6. Inlets: x2. Outlets: x2. Fill Ports: x2.  
LED Strip: DRGB 5V Addressable.  
Dimensions: Width: 245mm. Height: 380mm. Depth 84mm.

Included Items:

Dual D5/DDC Reservoir Distribution Plate: x1.  
Stop fittings: x2.  
SC Reservoir Retention Ring Black: x2  
Singularity Computers Distribution Plate D5/DDC Pump Top: x2.  
D5/DDC O-ring: x2.  
Spectrum 2.0 DRGB LED Strip: x1.  
Mounting Fasteners: M4 22mm Button Head Hex Bolt: x4. M4 Nut: x4.  
  
NOTE: D5/DDC Pump and Cover Not Included.

Additional Information

Brand	PPCS
SKU	PPCS-DISTRO81
Weight	5.0000
Color	Clear
Reservoir Type	Distribution plate
Pump Type	Laing D5 PWM
Vendor SKU/EAN	0738447961508

