

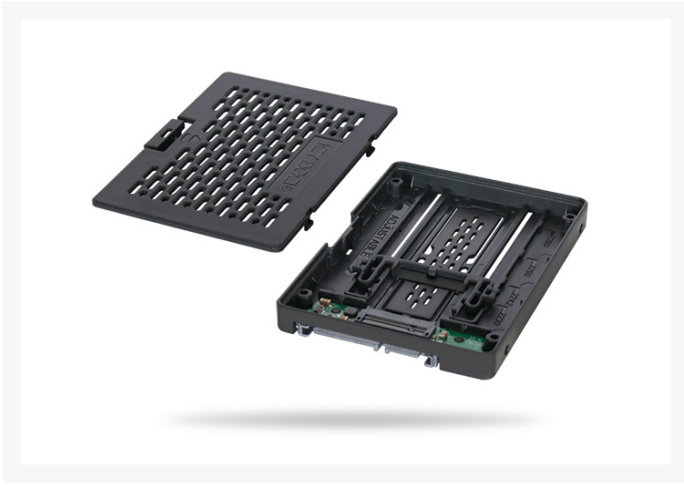


# EZConvert M.2 SATA SSD to 2.5" SATA SSD Converter Adapter

Special Price  
**\$9.96** was  
~~\$19.95~~

## Product Images





## Short Description

ICY DOCK's EZConvert MB703M2P-B is a complete solution to convert any M.2 SATA SSD into the exact dimensions and port locations as a standard 2.5" SSD (9.5mm height).

## Description

---

ICY DOCK's EZConvert MB703M2P-B is a complete solution to convert any M.2 SATA SSD into the exact dimensions and port locations as a standard 2.5" SSD (9.5mm height). Designed for compatibility, it accepts all M.2 sizes from 30mm to 80mm in length, mounting them without screws or tools, and allows these drives to be installed anywhere that accepts a bare 2.5" drive, such as a hot-swap bay, 2.5" mounting bracket, or in any of ICY DOCK's 2.5" drive enclosures. MB703M2P-B protects the delicate circuit board of your M.2 SSDs from bumps and drops.

## Features

---

### Key Features

- \* Convert your M.2 SATA SSD to a 2.5" SSD form factor, 9.5mm in height
- \* Exact same dimensions, port locations, and screw locations as a 2.5" SSD (9.5mm height)
- \* Accepts any M.2 SATA SSD from 30mm to 80mm in length (2230 / 2242 / 2260 / 2280)
- \* Enables hot-swap functionality for any M.2 SATA SSD
- \* Supports full SATA III bandwidth specification of 6Gbps
- \* 100% tool-less and screw-less M.2 drive installation
- \* Can be installed into any 2.5" backplane, hot-swap bay, or USB drive adapter.
- \* Sturdy ABS plastic construction
- \* Body and lid each use strong one-piece construction.
- \* Supports SATA data and power cables with locking latch designs
- \* Industry leading 3 year warranty with exceptional customer support
- \* Complimentary technical support from trained US-based ICY DOCK support technicians

## Specifications

---

Product Name :	M.2 SATA SSD to 2.5" SATA SSD Converter Adapter
Model Number :	MB703M2P-B
Color :	Black
Support Drive Size:	1 x B / B + M key M.2 SATA SSD 2230/2242/2260/2280
Compatible Drive Type :	SATA

Number of M.2:	1
Drive Bay :	1 x 2.5" SATA drive bay (9.5mm - 15mm)
Host Interface :	1 x SATA 7pin
Power Input :	1 x SATA 15pin power connector
Transfer Rate :	Up to 6Gbps (Depending on hard drive speed)
Support HDD Capacity :	No Limitation
Structure / Material :	Plastic
Support Hot-Swap :	Yes
Product Dimension (W x H x D) :	70.0 x 9.5 x 101.0mm
Product Net Weight :	28g
Package Gross Weight :	53g
Package contents :	device, user manual
SATA Connector Insertion Rate :	10,000
Humidity :	5%~65% RH
Operating Temperature :	0°C to 60°C (32°F to 140°F)
Storage Temperature :	-35°C to 70°C (-31°F to 158°F)

## Additional Information

---

Brand	IcyDock
SKU	MB703M2P-B
Weight	0.1100
Color	Black
Device Type	SSD/HDD Enclosure
Bay Size	2.5" Bay
Special Price	\$9.96

