



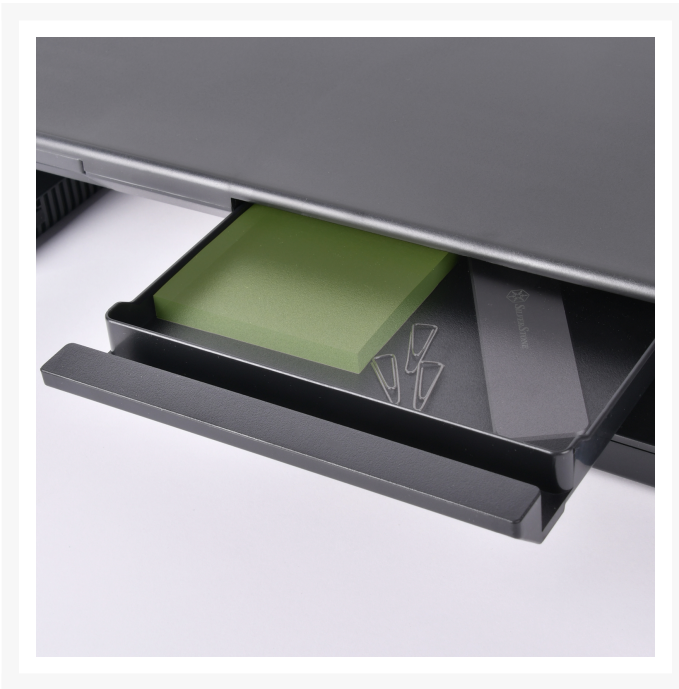
# SilverStone Technology Multi-Function Monitor Stand with Phone/Tablet Stand and Storage Drawer

\$34.99

## Product Images







## Short Description

---

MR02 is an adjustable monitor riser with patented foldable corner stands that enable it to shrink or extend into three distinct widths.

## Description

---

MR02 is an adjustable monitor riser with patented foldable corner stands that enable it to shrink or extend into three distinct widths. This means the MR02 can be placed on a variety of desktop settings and

comfortably accepts monitor or PC of different sizes up to 25kg (55.11 lbs.). A Retractable phone/ tablet stand and a drawer are included to make this riser even more versatile, while there is also enough room underneath it to store keyboards or mouse.



Drawer is functioning as tablet and smart ph...



Enough room underneath for keyboard storage



Storage drawer (items for reference only)



Mobile phone stand (phone for reference only)



Protective stands prevent desktop surface fr...

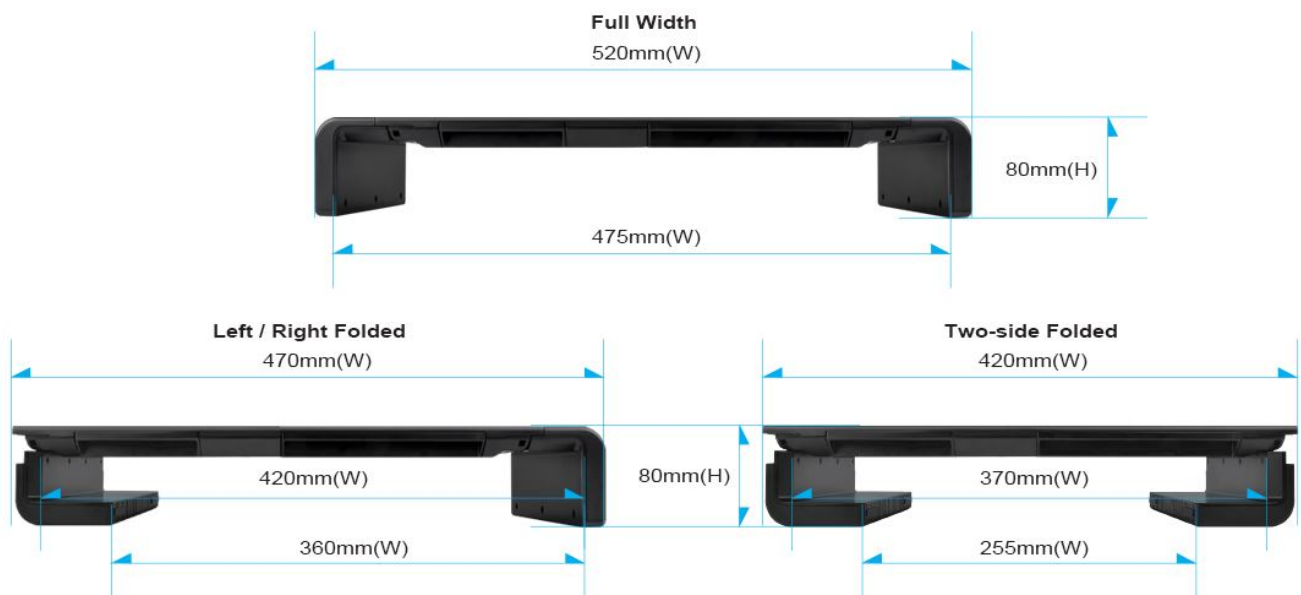
## Features

---

- Support loading up to 25kg (55.11 lbs)
- Raises your monitor or PC to an ergonomic height
- Adjustable width configuration to fit various desktop sizes
- Includes mobile phone / tablet stand and storage drawer
- Available space for keyboard stowage to increase desktop space

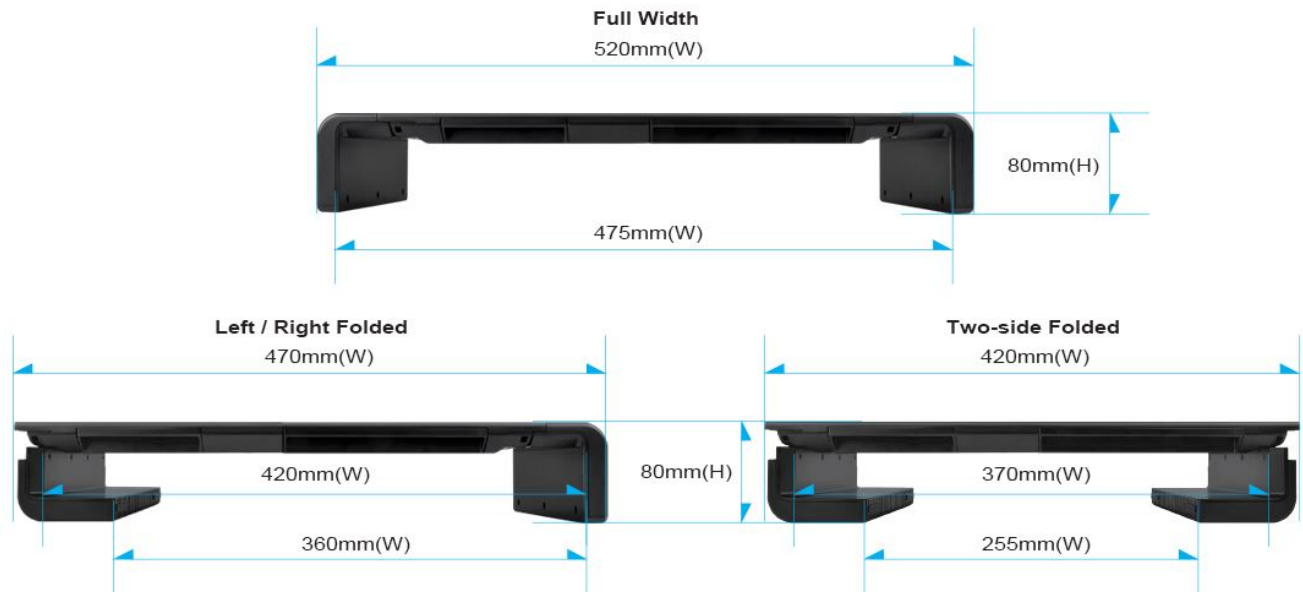
## SPECIFICATIONS

<b>Model No.</b>	SST-MR02B
<b>Color</b>	Black
<b>Material</b>	Plastic, metal
<b>Support max. weight</b>	25kg (55.11 lbs.)
<b>Net weight</b>	1.3kg (2.87 lbs.)
<b>Dimension</b>	520mm (W) x 80mm (H) x 200mm (D) (max.) 20.47" (W) x 3.15" (H) x 7.87" (D) (max.)



## SPECIFICATIONS

<b>Model No.</b>	SST-MR02B
<b>Color</b>	Black
<b>Material</b>	Plastic, metal
<b>Support max. weight</b>	25kg (55.11 lbs.)
<b>Net weight</b>	1.3kg (2.87 lbs.)
<b>Dimension</b>	520mm (W) x 80mm (H) x 200mm (D) (max.) 20.47" (W) x 3.15" (H) x 7.87" (D) (max.)



## Additional Information

<b>Brand</b>	SilverStone Technology
<b>SKU</b>	SST-MR02-B
<b>Weight</b>	3.4800
<b>Color</b>	Black

