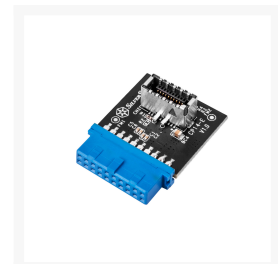
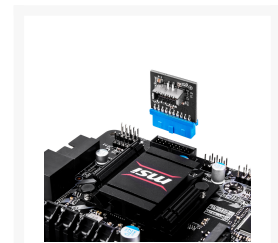
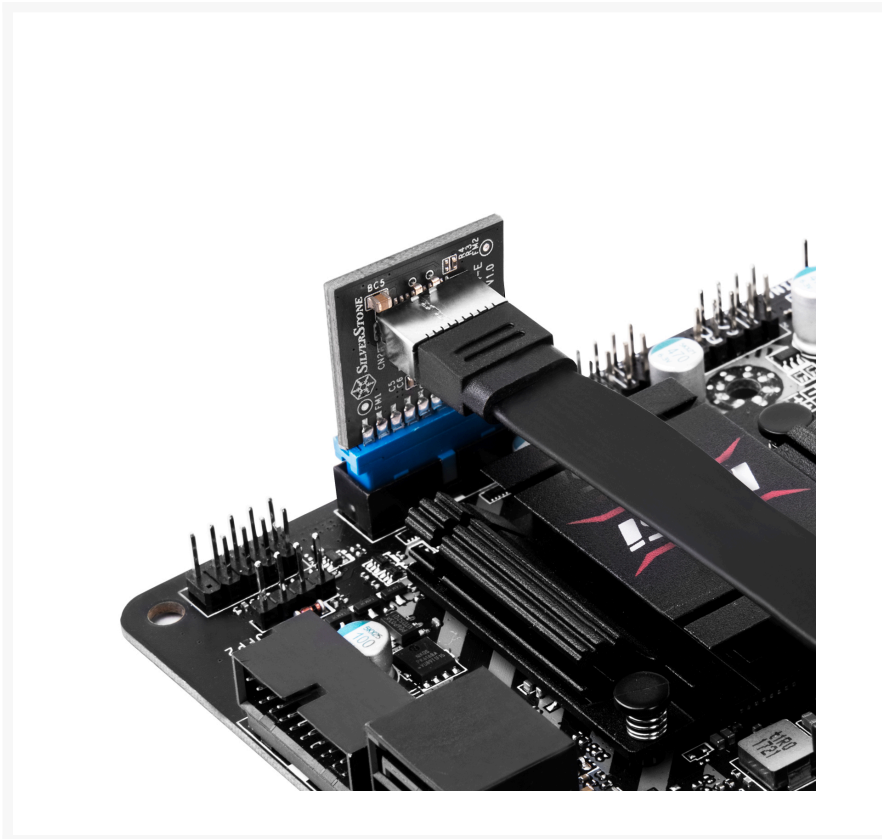
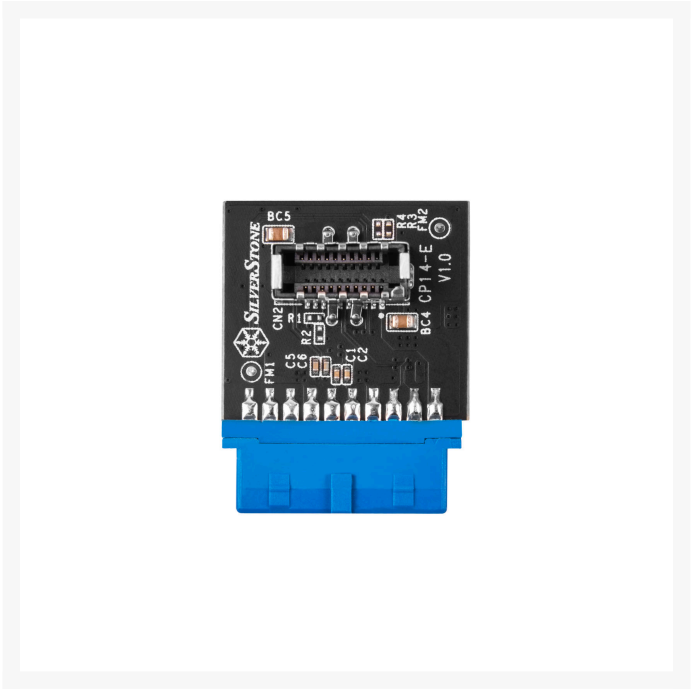
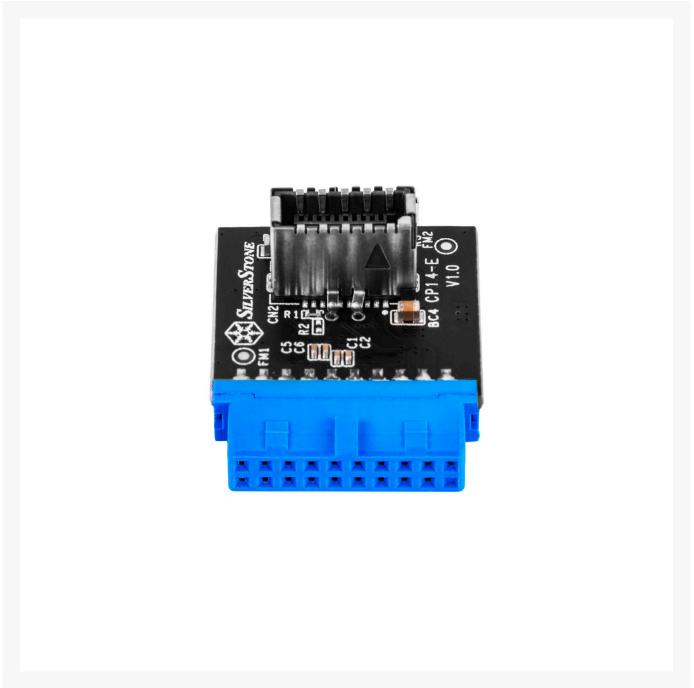
 SilverStone Technology
CP14-E USB 3.0 Internal 19
Pin Header to USB 3.1/3.2
Type-C (20 Pin) Key A
Adapter Card for USB Type-
C Port

\$24.95

Product Images





Short Description

SilverStone SST-CP14E - USB 3.0 internal (19-pin) header to USB 3.1 / 3.2 Type-C (20-pin) Key-A adapter

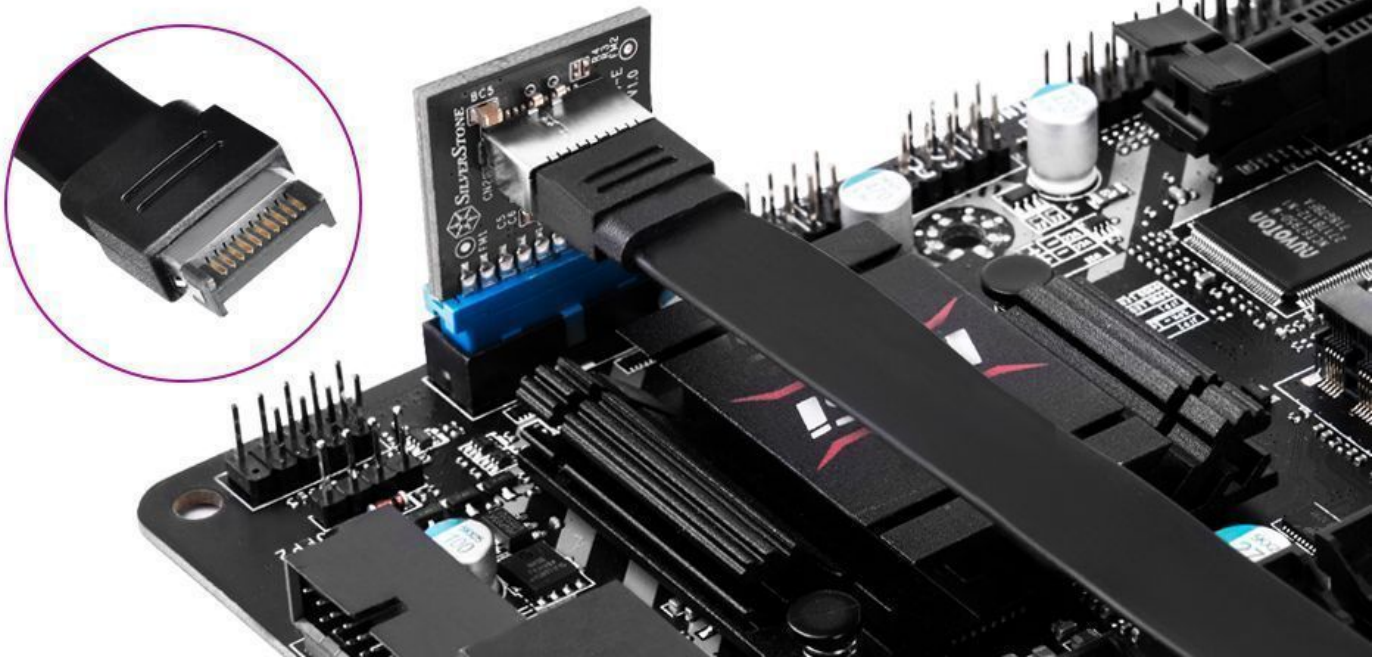
Description

SilverStone CP14-E

Designed for cases with front USB Type-C ports that utilizes the 20-pin Key A connector, the SilverStone's CP14-E adapter can convert motherboard's older USB 3.0 19-pin internal header to be compatible with 20-pin Key A connectors. It is easy to add and there is no driver installation required.

Designed for Type-C

Adds internal 20-pin Key A connector for supporting corresponding front USB Type-C port



Features

- USB 3.0 internal (19-pin) to USB 3.1 / 3.2 internal Type-C 20-pin (Key A)
- Internal Type-C 20-pin (Key A) port supports USB 3.1 / 3.2 (Gen2 / Gen1), USB 3.0, USB 2.0 and USB1.1 devices
- No driver installation required

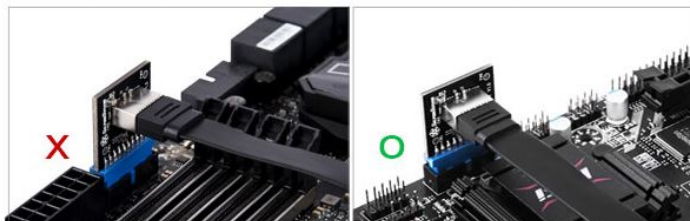
Specifications

SPECIFICATIONS

Model No.	SST-CP14-E
Color	Black
Connectors	Internal 19-pin male x 1 (host) Internal 20-pin Key-A female x 1 (target)
Transmitting Speed	Up to USB 3.1 / 3.2 Gen 2 10 Gbps (depends on host transfer rate)
Dimension	24mm (W) x 10mm (H) x 30mm (D) 0.94" (W) x 0.39" (H) x 1.18" (D)
Weight	4.5g

Remark :

When installing CP14-E, ensure it is clear of other components on motherboard or adapter card to avoid interference with connecting to USB Type-C cable.



Additional Information

Brand	SilverStone Technology
SKU	SST-CP14-E
Weight	1.1000
Color	Black
Connector Type	USB Adapter

