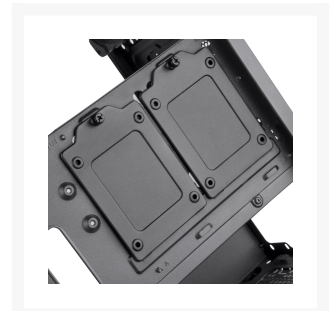


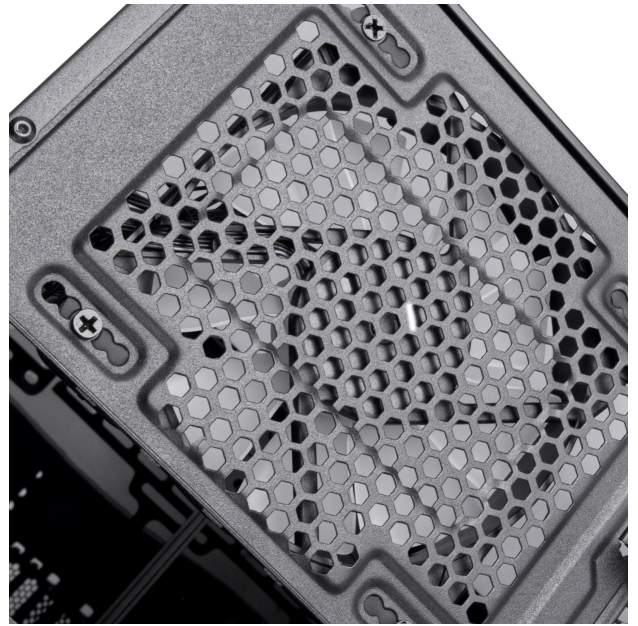


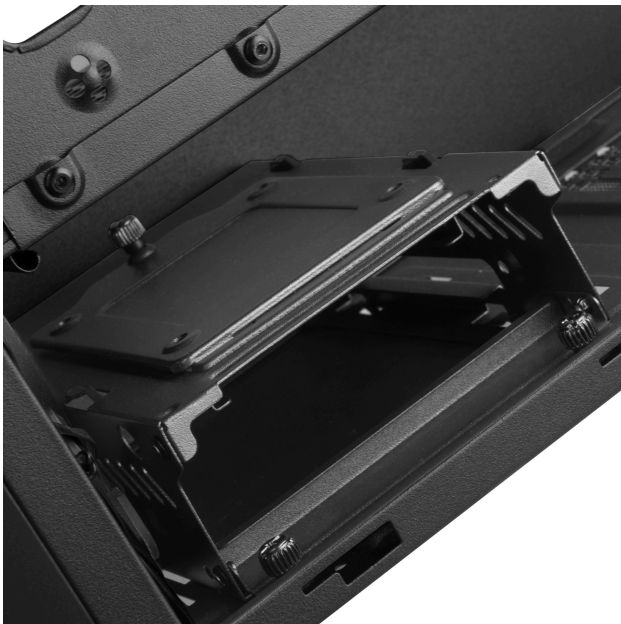
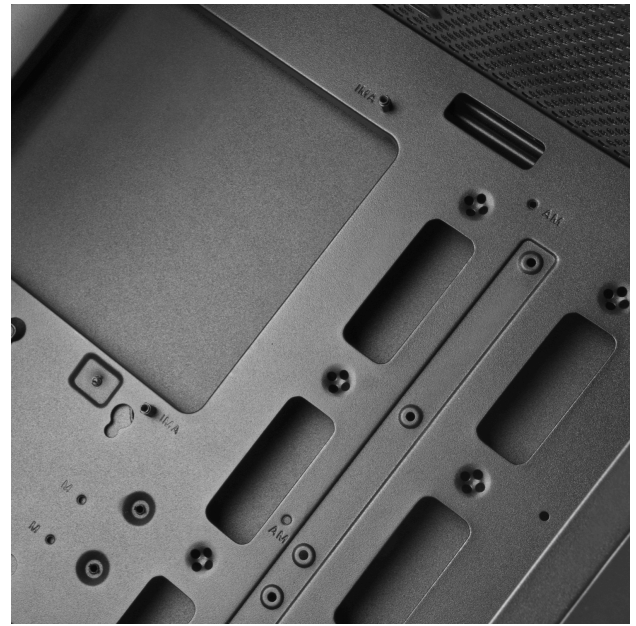
Silverstone FARA B1 PRO, ARGB Lighting, Tempered Glass, mid Tower ATX Chassis

\$94.99

Product Images







Short Description

SilverStone FARA B1 PRO

Sleek ARGB lighting tempered glass mid tower ATX chassis

FARA B1 PRO, an entry-level ATX mid-tower chassis from SilverStone that covers the essentials for a contemporary gaming PC build. Its design features a lightly tinted front panel, with large front intakes through a star-crossed grille on both sides.

Description

SilverStone FARA B1 PRO

Sleek ARGB lighting tempered glass mid tower ATX chassis

FARA B1 PRO, an entry-level ATX mid-tower chassis from SilverStone that covers the essentials for a contemporary gaming PC build. Its design features a lightly tinted front panel, with large front intakes through a star-crossed grille on both sides.



ATX (12" x 9.6"), Micro-ATX (9.6" x 9.6")
Mini-ITX (6.7" x 6.7")



322mm



165mm



Standard ATX/PS2



Features



ARGB controller



Star-crossed mesh grille on front panel



Front I/O port includes USB 3.0 x 2, USB 2.0...



7 expansion slots



Internal drive cage with 2.5" mounting plate



Large cutout on motherboard tray for CPU b...



2.5" SSD mounting plate



Equipped with 3 x 120mm ARGB fans at the ...



Equipped with 1 x 120mm ARGB fan at the r...

Specifications

SPECIFICATIONS

Model No.	SST-FAB1B-PRO (Black + ARGB fans + Tempered glass)	
Material	Steel, plastic, tempered glass	
Motherboard	ATX, Micro-ATX, Mini-ITX	
Drive bay	External	--
	Internal	3.5" x 1 2.5" x 4
Cooling system	Front	120mm x 3 / 140mm x 2 (120mm x 3 ARGB fan included)
	Rear	120mm x 1 (120mm x 1 ARGB fan included)
	Side	--
	Top	120mm x 2, 140mm x 2
	Bottom	--
Radiator support	Internal	--
	Front	120mm / 140mm / 240mm / 280mm
	Rear	120mm
	Top	120mm / 240mm
Expansion slot	Bottom	--
	Internal	--
Front I/O port	USB 3.0 x 2 USB 2.0 x 1 Audio x 1	
Power supply	Standard PS2(ATX)	
Limitation of expansion card	Length: 322mm with front fan Width: 170mm	
Limitation of CPU cooler	165mm	

Limitation of PSU	160mm with 3.5" drive cage installed
Net weight	5.75 kg
Dimension	207mm (W) x 446mm (H) x 401mm (D), 37 Liters 8.15" (W) x 17.56" (H) x 15.79" (D), 37 Liters

Additional Information

Brand	SilverStone Technology
SKU	SST-FAB1B-PRO
Weight	12.6700
Color	Black
Chassis Form Factor	Mid-Tower
Side Panel	Window
Motherboard Support	ATX

