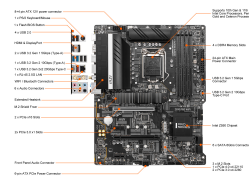
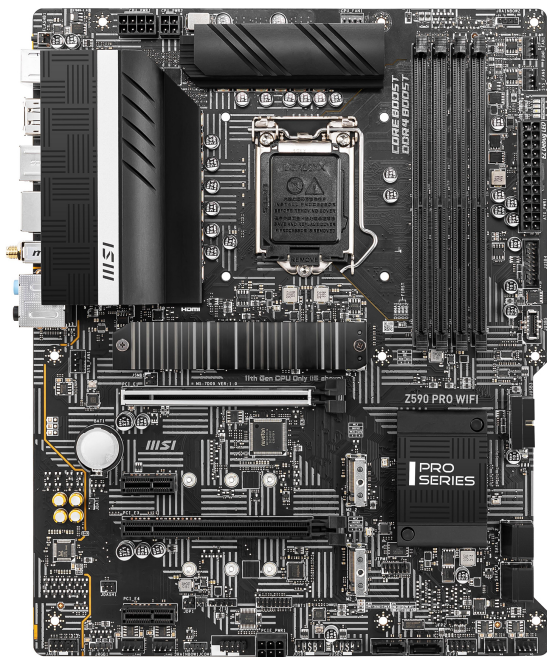


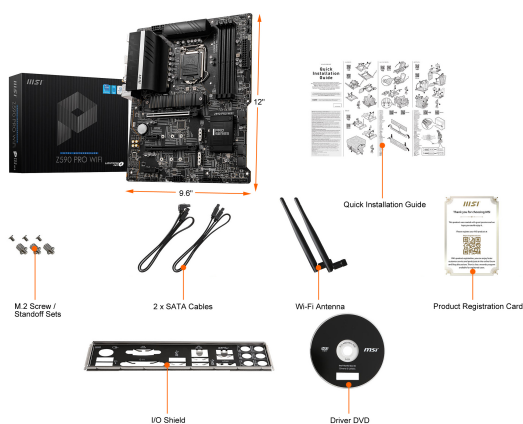
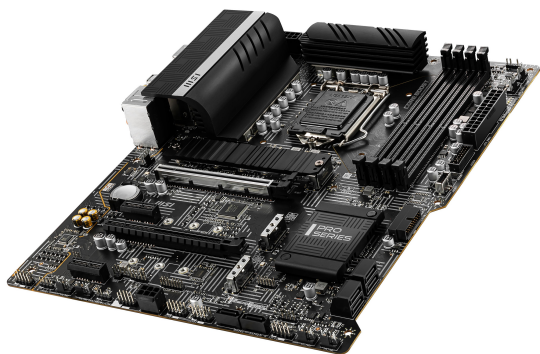


MSI Z590 PRO WIFI LGA 1200 Intel Z590 SATA 6Gb/s ATX Intel Motherboard

\$219.99

Product Images





Short Description

the MSI Z590 A Pro and the Z590 Pro WiFi blend basic with stylish. It uses a black ATX sized PCB, with white straight lines patterning, and black/silver accented heatsinks.

Description

3

Features

- Intel Z590
- Supports 11th / 10th Gen Intel Core processors
- Supports Intel Pentium Gold / Celeron processors
- DDR4 1R 3200 / 2933 / 2666 / 2133 for 11th Gen Intel CPU (by JEDEC & POR)
- DDR4 1R 2933 / 2666 / 2133 for 10th Gen Intel CPU (by JEDEC & POR)
- Max overclocking frequency:
- 1DPC 1R Max speed up to 5333
- 1DPC 2R Max speed up to 4700+
- 2DPC 1R Max speed up to 4400+
- 2DPC 2R Max speed up to 4000+

Specifications

Model

Brand MSI

Model Z590 PRO WIFI

Supported CPU

CPU Socket Type LGA 1200

CPU Type Supports 11th / 10th Gen Intel Core processors
Supports Intel Pentium Gold / Celeron processors

Chipsets

Chipset Intel Z590

Onboard Video

Onboard Video Chipset Supported only by CPU with integrated graphic

Memory

Number of Memory Slots 4×288pin

DDR4 1R 3200 / 2933 / 2666 / 2133 for 11th Gen Intel CPU (by JEDEC & POR)
DDR4 1R 2933 / 2666 / 2133 for 10th Gen Intel CPU (by JEDEC & POR)

Memory Standard Max overclocking frequency:
1DPC 1R Max speed up to 5333
1DPC 2R Max speed up to 4700+
2DPC 1R Max speed up to 4400+
2DPC 2R Max speed up to 4000+

Maximum Memory Supported 128GB

Channel Supported Dual Channel

Expansion Slots

PCI Express 4.0 x16 1 x PCI Express 4.0 x16*
* Actual support may vary by CPU.

PCI Express 3.0 x16 1 x PCI Express 3.0 x16

PCI Express x1 2 x PCI Express 3.0 x1

Storage Devices

SATA 6Gb/s 6 x SATA 6Gb/s

3 x M.2 slots (Key M)

M2_1 slot (from CPU) 1:
Available only on 11th Gen Intel CPU
Supports up to PCIe 4.0x4
Supports 2242/2260/2280/22110 storage devices

M.2 M2_2*, M2_3** slots (from Z590 chipset):
Support up to PCIe 3.0x4
Support up to SATA 6Gb/s
Support 2242/2260/2280 storage devices

* SATA2 will be unavailable when installing M.2 SATA SSD in the M2_2 slot.
** SATA5 & SATA 6 will be unavailable when installing M.2 SSD in the M2_3 slot.

Intel Optane Ready Intel Optane Memory Ready*
* Before using Intel Optane memory modules, please ensure that you have updated the drivers and BIOS to the latest version from MSI website.

SATA RAID 0/1/5/10

Onboard Audio

Audio Chipset Realtek ALC897

Audio Channels 7.1 Channels

Onboard LAN

LAN Chipset Intel I225-V

Max LAN Speed 10/100/1000/2500Mbps

Wireless LAN Intel Wi-Fi 6E AX210
Supports 802.11a/b/g/n/ac/ax

Bluetooth Bluetooth 5.2

Rear Panel Ports

	1 x Flash BIOS Button
	1 x PS/2 Keyboard/Mouse
	6 x Audio Connectors
	1 x HDMI
	1 x DisplayPort
Back I/O Ports	1 x USB 3.2 Gen 2x2 20Gbps Type-C
	2 x USB 3.2 Gen 1 5Gbps (Type-A)
	1 x USB 3.2 Gen 2 10Gbps (Type-A)
	4 x USB 2.0
	1 x LAN
	WIFI / Bluetooth Connectors

Internal I/O Connectors

Onboard USB	1 x USB 3.2 Gen 2 10Gbps Type-C port
	2 x USB 3.2 Gen 1 5Gbps connectors (supports additional 4 USB 3.2 Gen 1 5Gbps ports)
	2 x USB 2.0 connectors (supports additional 4 USB 2.0 ports)
Other Connectors	1 x 6-pin ATX PCIe power connector
	1 x 4-pin CPU fan connector
	1 x 4-pin water-pump fan connector
	6 x 4-pin system fan connectors
	1 x Front panel audio connector
	2 x System panel connectors
	1 x Chassis Intrusion connector
	1 x Clear CMOS jumper
	1 x TPM module connector
	1 x Serial port connector
	1 x Tuning controller connector
	1 x TBT connector (Supports RTD3)

Physical Spec

Form Factor	ATX
Dimensions (W x L)	12.0" x 9.6"
Power Pin	1 x 24-pin ATX main power connector
	1 x 8-pin ATX 12V power connector
	1 x 4-pin ATX 12V power connector

Additional Information

Brand	MSI
SKU	MSI-Z590-WIFI-PRO
Weight	10.0000
Color	Black
Vendor SKU/EAN	824142242148

