



# EK-Quantum Vector XC3 RTX 3080/3090 Active Backplate - Acetal

Special Price  
**\$96.81** was  
**\$152.99**

## Product Images



## Short Description

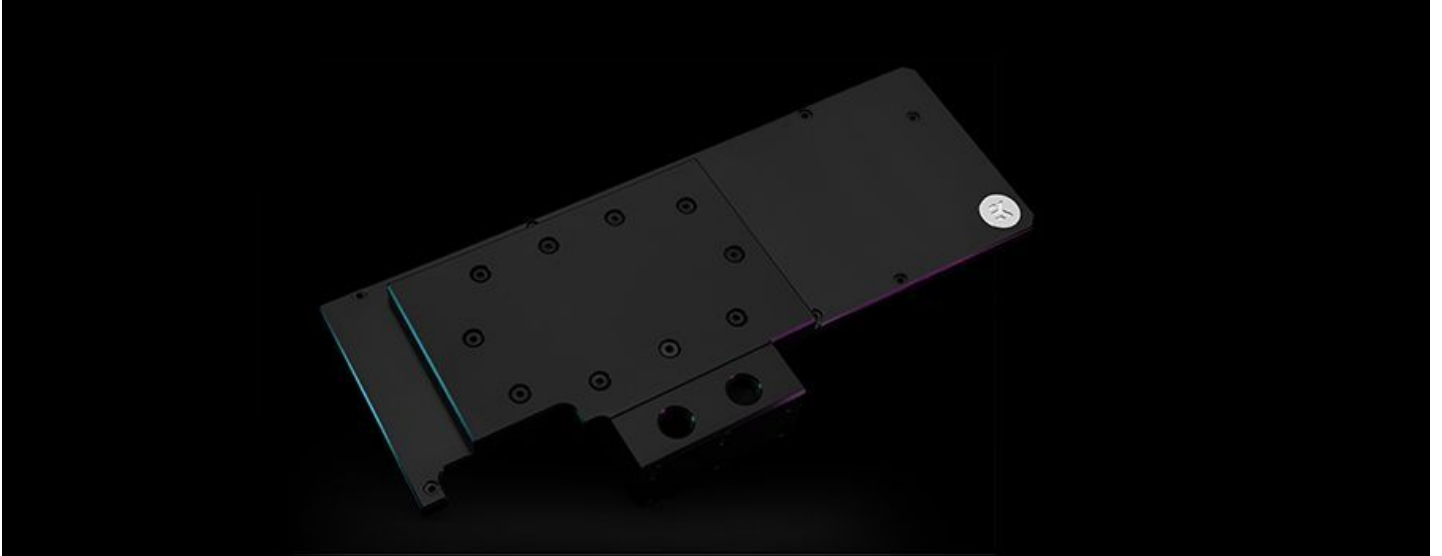
EK-Quantum Vector XC3 RTX 3080/3090 Active Backplate - Acetal is a cutting-edge addition to the EK® Quantum Line. It is made to complement the existing EK-Quantum Vector XC3 RTX 3080/3090 water blocks and actively cool the backside of all EVGA® GeForce RTX™ 3080 and 3090 XC3 GPU.

## Description

---

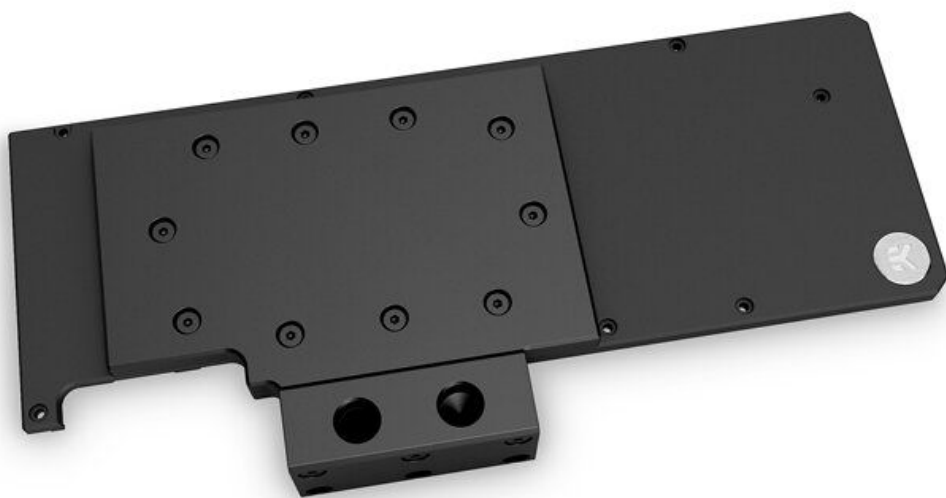
EK-Quantum Vector XC3 RTX 3080/3090 Active Backplate - Acetal is a cutting-edge addition to the EK® Quantum Line. It is made to complement the existing EK-Quantum Vector XC3 RTX 3080/3090 water blocks and actively cool the backside of all EVGA® GeForce RTX™ 3080 and 3090 XC3 GPU.

For a precise compatibility match of this water block, we recommend you refer to the EK Cooling Configurator.



## EK-Quantum Vector XC3 RTX 3080/3090 Active Backplate

EK-Quantum Vector XC3 RTX 3080/3090 active backplate links the water block and the active backplate part with a new terminal, which replaces the stock terminal coming with your water block. This way the whole enclosure requires only one inlet and one outlet, removing any unneeded additional tubing and reducing clutter. It is the ultimate aesthetic and performance solution that finds your GPU sandwiched between two water blocks allowing maximum cooling.



The Vector Active Backplate directly cools the PCB hotspots that are found on the backside of the GPU core and the VRM (voltage regulation module). On the RX 3090, the VRAM located on the backside is cooled, while the RTX 3080 gets cooling for the PCB located around the front-mounted VRAM. Cooling liquid is channeled over all these critical areas.

These newly developed active backplates feature a fin array with 6 wide channels allowing for very low flow restriction. This in turn allows overall lower temperatures, while the active backplate gets more than sufficient surface area for heat transfer.



The base of this stealthy active backplate is CNC-machined out of nickel-plated electrolytic copper, while its top is CNC-machined out of durable Black POM acetal. The rest of the backplate is made of anodized aluminum and it does not come in contact with the liquid. These Vector Active Backplates also feature acetal terminals that match the top cover. The watertight sealing is ensured by high-quality EPDM O-rings.

## Specifications

---

EK-Quantum Vector XC3 RTX 3080/3090 Active Backplate - Acetal

- Necessary mounting screws, nuts, and washers
- 1x Nickel plated brass plug G1/4"
- EK-Loop Multi Allen Key (6mm, 8mm, 9mm)
- Thermal pads

Technical Specification:

- Dimensions: (LxHxW) - 274x124x15mm

## Additional Information

---

Brand	EK Waterblocks
SKU	EK-QUANT-VEC-XC3-RTX-3000-BP-AC-D
Weight	3.5000
Color	Black
Vga	EVGA® XC3 RTX 3080 and 3090
Block GPU Type	Nvidia
Block Style	Copper-Acetal
Vendor SKU/EAN	3831109843567
Special Price	\$96.81

