

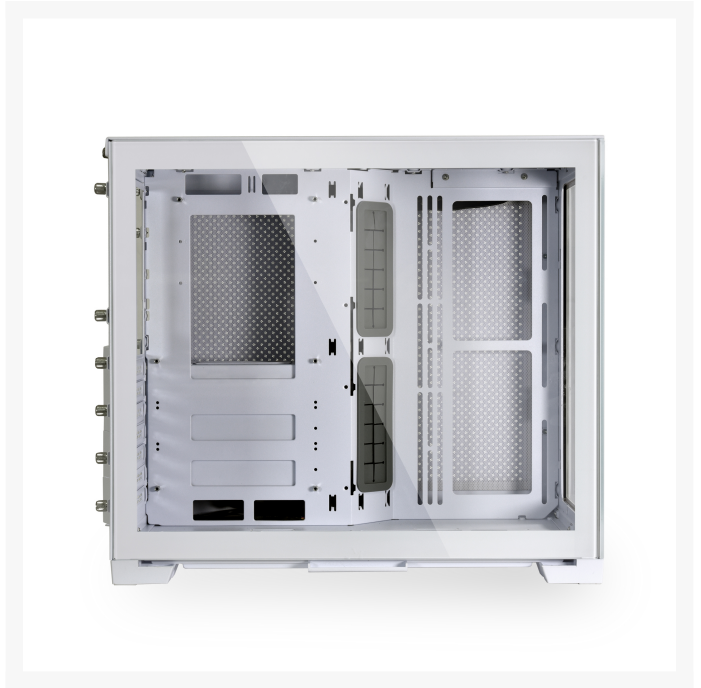


# Lian Li O11D Mini Tempered Glass ATX Mini Tower Computer Case - Snow Edition

\$134.95

## Product Images





## Short Description

---

With the capacity and flexibility of the O11D Mini, you can expand your creativity and water-cooling potential inside its compact frame.

## Description

---

With the capacity and flexibility of the O11D Mini, you can expand your creativity and water-cooling potential inside its compact frame. The 30mm space behind the side fan / radiator bracket allows users to mount fans,

thus efficiently intake fresh air to directly cool the radiator and leaves enough space to install long GPUs in this compact case.



## **O11 DYNAMIC MINI** SNOW EDITION

### **Redefine Modularity**

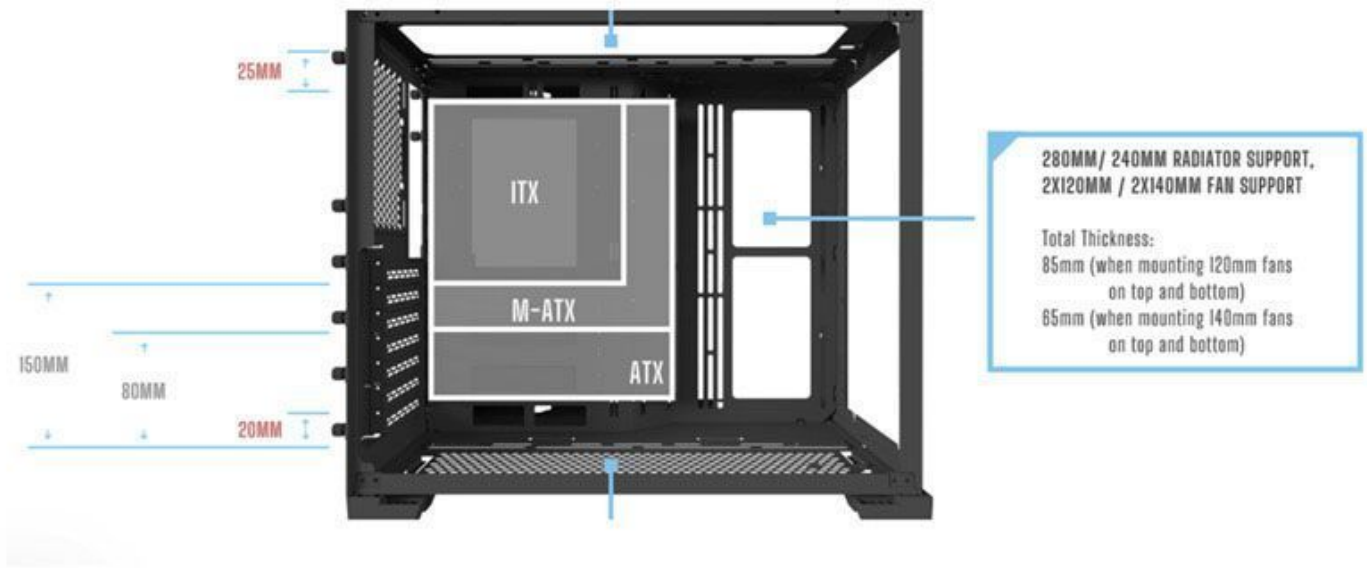
Think big, build small!

With the capacity and flexibility of the O11D Mini, you can expand your creativity and water-cooling potential inside its compact frame.

## Features

---

## COOLING COMPATIBILITY FOR DIFFERENT CONFIGURATIONS



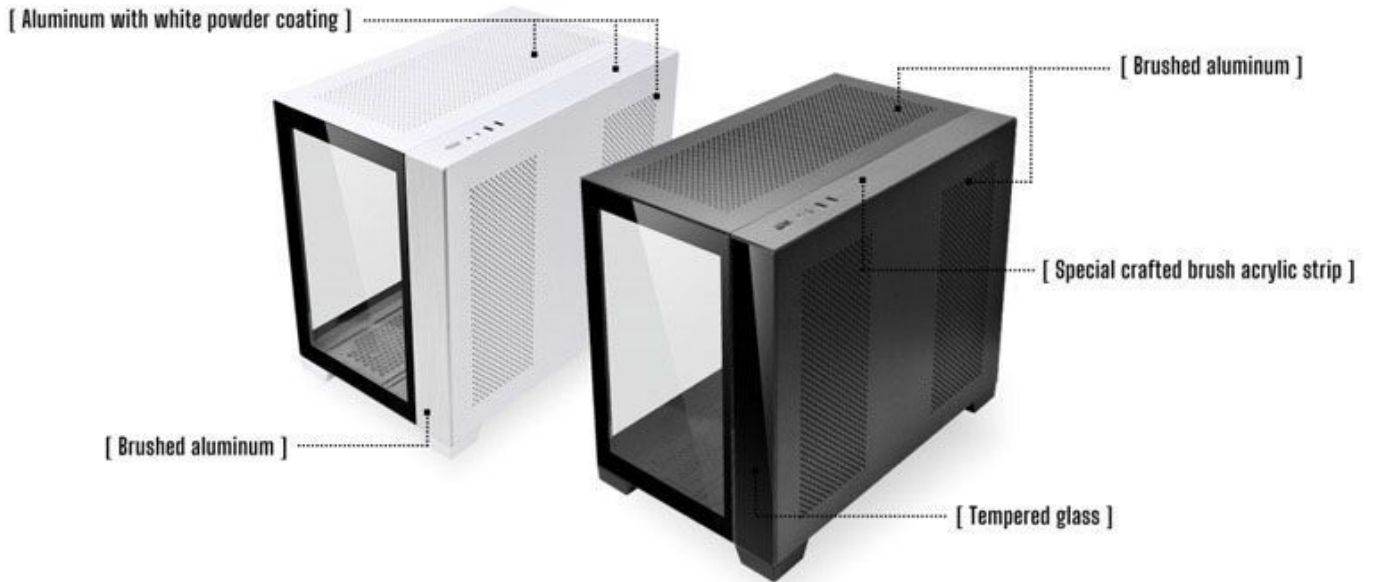
## SIDE RADIATOR CONFIGURATION WITH LONG GPU

The 30mm space behind the fan / radiator bracket allows users to mount fans, to efficiently intake fresh air to directly cool the radiator and leaving enough space to install long GPUs in this compact case



## EXQUISITE APPEARANCE

With a blend of brushed aluminum and tempered glass, the 011D Mini not only looks classic and modern but also has a high-quality exterior feel and touch



## Specifications

---

Mini Tower

Color

Snow

Material

Steel

Aluminum

Glass

Motherboard Support

ATX

microATX

Mini-ITX

Max Motherboard Size

ATX

Motherboard Tray

Fixed

Side Panel

Window

EXPANSION

Internal 3.5" Drive Bays

2  
Internal 2.5" Drive Bays  
2  
Expansion Slots  
7  
PORTS & CONNECTORS  
Front Ports  
1 x Headphone/Microphone  
USB 3.0  
3  
COOLING SPECIFICATIONS  
Radiator Mounting  
Top Internal  
Side Internal  
Bottom Internal  
Supported Radiator Sizes  
1 x 240 mm Top Internal  
1 x 280 mm Top Internal  
1 x 360 mm Top Internal  
1 x 360 mm Bottom Internal  
1 x 240 mm Bottom Internal  
1 x 240 mm (Side)  
1 x 280 mm (Bottom)  
1 x 280 mm (Side)  
Liquid Cooling Ready  
Yes

## Additional Information

---

Brand	Lian-Li
SKU	PC-O11D-MINI-SE
Weight	23.7000
Color	White
Chassis Form Factor	Mini-Tower
Motherboard Support	Micro ATX

