

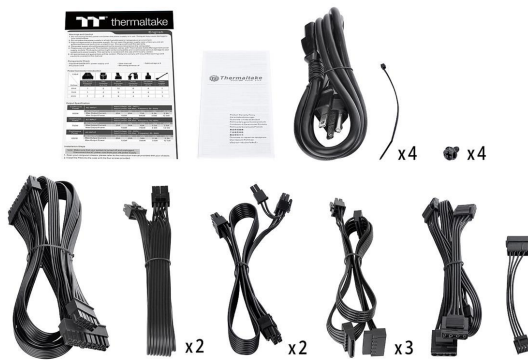
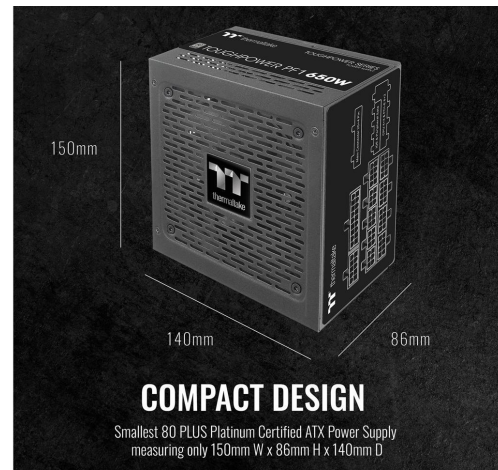


Thermaltake Toughpower PF1 750W 80+ Platinum Single Side SMD Compact Design

\$145.99

Product Images





Short Description

Toughpower PF1 750W — TT Premium Edition

80 PLUS Platinum certified fully modular PSU with Hydraulic Bearing fan.

The Toughpower PF1 Platinum Series comes in 850W/750W/650W and delivers 80 PLUS Platinum efficiency. Besides the fundamental features listed below, The PF1 Platinum Series has two other critical characteristics — compact size and our new board technology.

Description

Toughpower PF1 750W — TT Premium Edition

80 PLUS Platinum certified fully modular PSU with Hydraulic Bearing fan.

The Toughpower PF1 Platinum Series comes in 850W/750W/650W and delivers 80 PLUS Platinum efficiency. Besides the fundamental features listed below, The PF1 Platinum Series has two other critical characteristics — compact size and our new board technology. With the small footprint of 140mm (D) x 86mm (H) x 150mm (L), the PF1 prides its ample space for cable management. The new board technology offers single sided SMD which all IC chips are set to be only on one side, allowing the heat to only be accumulated on one side so the entire board can be covered and cooled down by the 20mm ultra quiet Hydraulic Bearing Fan.

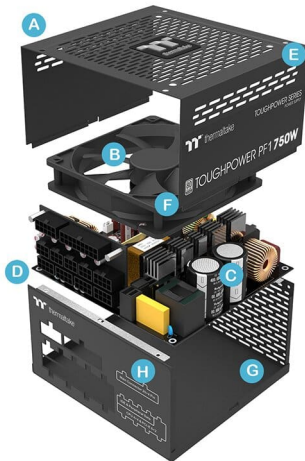


80 PLUS Platinum Certified and Intel C6/C7 States Ready

Toughpower PF1 Platinum series saves energy through its high energy efficiency up to 92% and is certified to 80 PLUS Platinum. The series has been optimized to work with all generations of Intel's processors to achieve maximum energy saving.

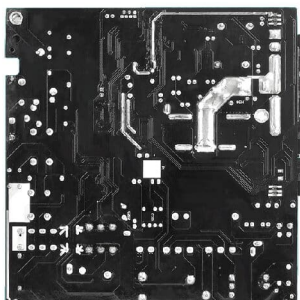


- Durable Chassis
- Concentrated Compression Fan Blade
- DC to DC Design
- Modular Cable Management
- Side Ventilation Design
- Anti-Vibration Mounting System
- 100% High Quality Japanese 105°C / 221°F Capacitors
- Single Side SMD and Zero Cable Platform



New Board Technology Offering Single Side SMD

The new design of the PCB allows all SMDs to sit on the top side of the PSU's PCB. This design not only prevents heat accumulation at the bottom of the PSU but also allows cold air to pass through with the 120mm Hydraulic Bearing Fan covering the entire set of components, keeping the PSU's temperature low.



Specifications

Specification

P/N	PS-TPD-0750FNFAPU-1
MODEL	TTP-750AH2FKP
WATTS	750W
MAX. OUTPUT CAPACITY	750W
PEAK OUTPUT CAPACITY	900W
COLOR	Black
DIMENSION (W / H / D)	150mm(W) x 86mm(H) x 140mm(D)
PFC (POWER FACTOR CORRECTION)	Active PFC
POWER GOOD SIGNAL	100-500 msec
HOLD UP TIME	> 16msec at 100% of full load
INPUT CURRENT	10A
INPUT FREQUENCY RANGE	50Hz - 60Hz
INPUT VOLTAGE	100V – 240V~
OPERATING TEMPERATURE	5°C to + 50°C
OPERATING HUMIDITY	20% to 85%, non-condensing
STORAGE TEMPERATURE	-40°C to + 55°C
STORAGE HUMIDITY	10% to 95%, non-condensing
COOLING SYSTEM	12cm hydraulic bearing fan
EFFICIENCY	Meet 80 PLUS Platinum at 115Vac input.
MTBF	120,000 hrs minimum
SAFETY APPROVAL	OVP/OCP/CE/UL/TÜV/FCC/BSMI/CCC/ EAC
PCI-E 6+2PIN	4

Additional Information

Brand	Thermaltake
SKU	PS-TPD-0750FNFAPU
Weight	6.5000
Color	Black
PSU Type	ATX
PSU Style	Modular
PSU Wattage	750W
PSU Efficiency	80 PLUS Platinum
Vendor SKU/EAN	841163075418

