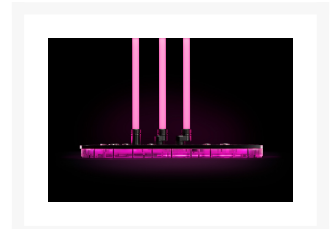




EK-Quantum Torque Rotary Offset 7 - Black

\$15.49

Product Images

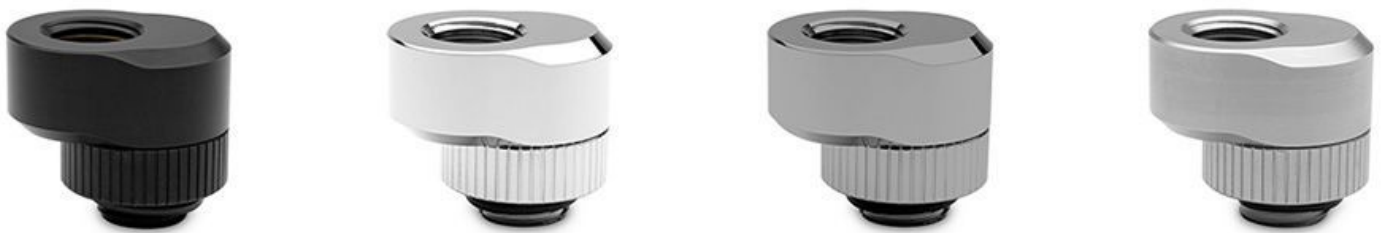


Short Description

EK-Quantum Torque Rotary Offset 7 - Black is a premium revolvable male+female threaded offset adapter fitting.

Description

EK-Quantum Torque Rotary Offset 7 - Black is a premium revolvable male+female threaded offset adapter fitting. It is commonly used to distance or offset G1/4" ports in tight spaces or to perfectly align hard tubing to another port in order to have aesthetically pleasant parallel tubing. Aesthetically, it is a perfect match with the EK-Quantum Torque series fittings and adapters.



Made from nickel-plated CNC machined brass. Sealed with quality EPDM O-rings. These offsets adapter fittings are rotary and they can be rotated around their axis in 360 degrees to fine-tune and find the exact positioning required.

PLEASE NOTE:

- This product should NOT be installed with any aluminum [Fluid Gaming](#) parts!

Specifications

Technical data:

Threading: 2 x G1/4" (Male - Female)

Thread length: 4.5mm

Material: Brass

Finish: Black

Offset: 7mm

Made in Europe

Additional Information

Brand	EK Waterblocks
SKU	EK-QUANT-TORQUE-ROTOFF7-BK
Weight	0.2000
Special Order	No
Fitting Type	Rotary
Vendor SKU/EAN	3831109832820

