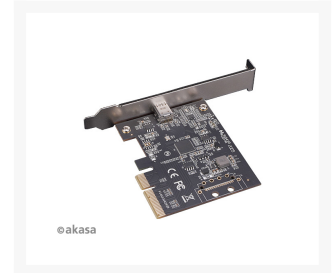
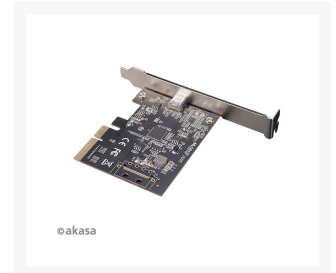




Akasa USB 3.2 Gen 2x2 Type-C to PCIe Host Card

\$45.99

Product Images



Short Description

Internal PCIe Expansion card with Type-C connector, able to handle SuperSpeed USB 20 Gbps data transfer. Can fit PCIe x4, x8 and x16 slots.

Description



20 Gbps
USB 3.2 Gen 2x2 Type-C to PCI Host Card

- Super speed 20Gbps data transfer rate
- Reversible Type-C Connector
- Supports slim systems with optional low-profile slot cover
- Fits in PCIe x4, x8 and x16 slot

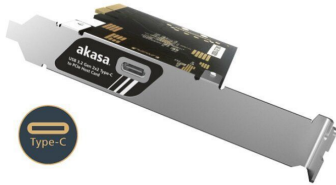
SuperSpeed USB 20Gbps Data Transfer Rate
 Provides fast data transfer speeds of up to 20 Gbps. SuperSpeed+ Interface can save you a lot of valuable time as you no longer need to wait so long to complete data transfer especially those large files like HD movies or system backups.



Interface	Speed
USB 3.2 Gen 2x2	20 Gbps (4X faster)
USB 3.2 Gen 2	10 Gbps
USB 3.2 Gen 1	5 Gbps

Add a 20 Gbps USB Type-C Port to your Desktop Computer

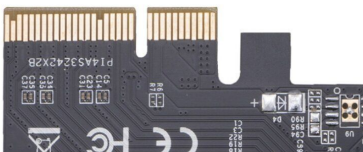
The PCIe card allows you to connect a USB3.2 Gen 2x2 (20 Gbps) USB Type-C port to your desktop computer.



Wide Compatibility

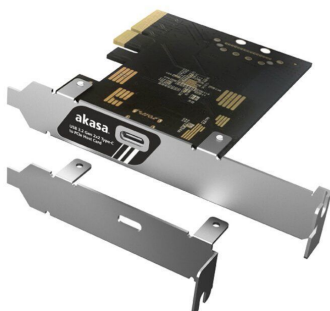
PCIe x4 expansion card fits in any PCIe 2.0 or PCIe 3.0 x4 or x8 or x16 slot. Backwards compatible with USB 2.0, 3.0 and 3.1 so users do not need to upgrade motherboard.

- ✓ x4
- ✓ x8
- ✓ x16



Functional Design

Includes optional low profile slot cover to support low profile cases.



Features



Specifications

Application	USB 3.2 Gen 2x2 PC system extension card
Designed for	PC systems with spare PCIe slot
Ports	USB Gen2x2 Type-C x1
Transfer Rate	20Gbps (USB 3.2 Gen 2x2) 10Gbps (USB 3.2 Gen 2) 5Gbps (USB 3.2 Gen 1 / USB 3.0) 480Mb/s (USB2.0)
Support	Windows 8.x/10 Linux 3.2, 3.10, 3.12, 4.2 and 4.4
Product Code	AK-PCCU3-07

Additional Information

Brand	Akasa
SKU	AK-PCCU3-07
Weight	0.4000
Color	Black
Card Function	USB
Card Form Factor	Low profile PCI-E
Ports	USB Type-C

