



Thermaltake The Tower 100 Snow Mini Chassis

\$119.99

Product Images





Short Description

The Tower 100 Snow is a vertically designed mini-ITX chassis with panoramic viewing. It comes with two preinstalled 120mm standard fans and three 4mm tempered glass windows at the front, on left and right side.

Description



The Tower 100 Snow Mini Chassis

Designed to expand the legacy of The Tower 900 E-ATX Super Tower Chassis, The Tower 100 Snow Mini Chassis is the newest member of The Tower Series. It features three 4mm tempered glass windows for a stunning view and two preinstalled 120mm standard fans on top and at the rear for exhaust. It is a much smaller version of The Tower 900 with dimensions of 462.8mm (Height), 266mm (Width), 266mm (Depth).

Though it may not be the smallest Mini-ITX chassis on the market, it is a highly capable one that can fit high-end components like the RTX 30 Series Graphics Cards. The Tower 100 Snow Mini Chassis is designed to target users who have a limited space at their workplace or at home, or those who simply do not want their PC to take too much space. No matter if you are a regular users, gamers, or content creators, etc., you will find it ideal and can place it almost anywhere in your room.



The image is for reference only.



TT Premium

To continue achieving the corporate mission of delivering the perfect user experience, Thermaltake developed "TT Premium" with the essence of combining supreme quality products with a new logo design. TT Premium is far more than just a guarantee of quality. Behind the name, it represents the passion in DIY, Modding and Thermaltake's desire to be the most innovative brand in the PC hardware market. To satisfy the demand of the high-end PC users, TT Premium follows its core values of Excellent Quality, Unique Design, Diverse Combinations and Boundless Creativity to provide a high performance PC product for every enthusiast.



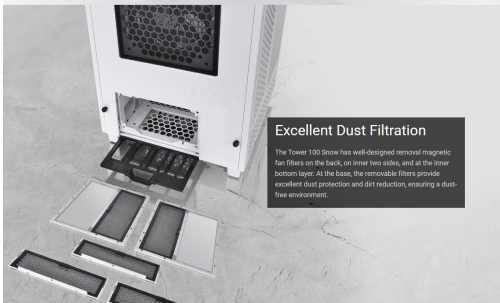
The image is for reference only.

Vertical Body Design

The Tower 100 Snow is a vertically designed case constructed with solid steel all around, the vertical design allows the chassis to have a smaller footprint, and helps to minimize obstruction to your gaming and workspace area. The vertical design also helps extract heat from the chassis by using a chimney effect, intaking cold air from the base and discharging the heat via the top.

Tempered Glass Panels With Panoramic View

The three 4mm tempered glass windows of The Tower 100 Snow are thicker and more scratch resistant when compared to standard acrylic. It not only creates a panoramic view for displaying internal components but also gives users an easy and quick access since the top panel and the three tempered glass windows are removed.



Excellent Dust Filtration

The Tower 100 Snow has well-designed removable magnetic fan filters on the back, on inner two sides, and at the inner bottom layer. At the base, the removable filters provide excellent dust protection and dirt reduction, ensuring a dust-free environment.

Sophisticated Space Design

Sophisticated space design maximizes the capacity of The Tower 100 Show for PC components support and helps tidy up cable management.



Air Intake and Exhaust

People may have concern about the cooling performance of a new PC chassis. However, the cold air intakes and hot air exhausts are well-developed, ensuring the interior temperature stays low at all times.



The image is for reference only.

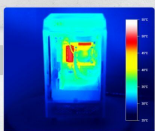
Idle and Full-load Temperature

To let our customers better understand the thermal performance of The Tower 100 Show Mini Chassis, we ran a test system at idle and full load. We used ADAM4 Extreme Portable and FurMark ASUS ROG Edition both running at the same time for 30 minutes, and the thermal images were taken with Testo 885-2 Thermal Imaging Camera.

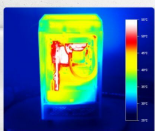
Specification

Motherboard	ASUS ROG STRIX Phantom Gaming ITX	Software	1. ADAM4 Extreme Portable 2. FurMark ASUS ROG Edition
CPU	Intel i9-9900K	Full load	30 min
GPU	ASUS ROG STRIX RTX 2070-O8G GAMING	Camera	Testo 885-2 Thermal Imaging Camera
RAM	TaupoRAM DDR4 4000 (two sticks)		
PSU	Toughpower GF1 ARGB 850W Gold		
CPU Cooler	THT 20 ARGB Sync ARGB Liquid Cooler		
Fans	THT 20 ARGB Sync ARGB Liquid Cooler (One Pure ARGB 120mm White and two Pure ARGB 140mm Silver Fans)		

Idle

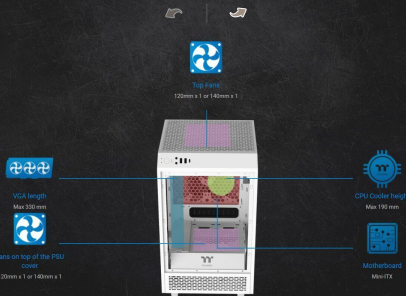


Full load



Hardware Support and Cooling Solution

The Tower 100 Show has good hardware support. It can support a CPU cooler with a maximum height of 190mm, VGA with maximum length of 330mm, a power supply with a length of up to 180mm, two 2.5" SSDs with the side bracket, and two 2.5" or two 3.5" HDD at the rear without need fan. Although The Tower 100 Show is a mini ITX case, it is still optimized for good cooling. The case comes with two pre-installed 120mm standard fans on top and at the rear for thermal extraction. Moreover, you can put one extra 120mm or 140mm fan on the top of the PSU cover and a 120mm All-in-One CPU cooler can be fixed on the top for basic watercooling.



Handy I/O Ports

Two 3.0 USB and one USB 3.1 (Gen 2) Type-C ports are placed on the top panel to grant direct access when needed.



DMD: Dismantlable Modular Design

Strip your case down to the bones and install elements when and as you need them with our modular design. The Tower 100 Show features modular panels, racks, brackets, and pre-designed mounting arrays. No more unreachable screw corners or glass installation can be a breeze with our Dismantlable Modular Design.



Specifications

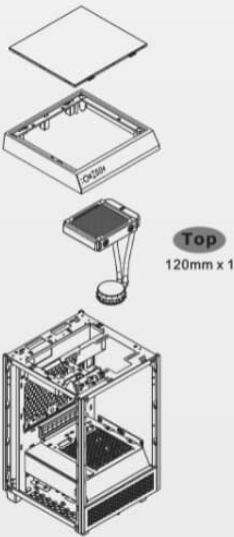
	The Tower
	The Tower 100 Snow
	Mini Tower
	462.8 x 266 x 266 mm (18.2 x 10.5 x 10.5 inch)
	6.1 kg / 13.45 lbs.
	Tempered Glass x 3 (4mm thickness)
	Black
	SPCC
	Top(exhaust): 120 x 120 x 25 mm Standard fan (1500rpm, 35.8 dBA) x 1 Rear(exhaust): 120 x 120 x 25 mm Standard fan (1500rpm, 35.8 dBA) x 1
	- 2 x 2.5"(with side bracket); 2 x 3.5" (without rear fan)
	2
	6.7" x 6.7" (Mini ITX)

	USB 3.2 (Gen 2) Type-C x 1, USB 3.0 x 2, HD Audio x 2
	Standard PS2 PSU (optional)
	Top: 1 x 120mm, 1 x 140mm Rear: 1 x 120mm, 1 x 140mm Top of the PSU Cover: 1 x 120mm, 1 x 140mm
	Top: 1 x 120mm
	CPU cooler height limitation: 190mm VGA length limitation: 330mm PSU length limitation: 180mm

All-in-One Support List

All-in-One Compatibility List

	120mm	240mm	140mm	280mm
Top	•	-	-	-



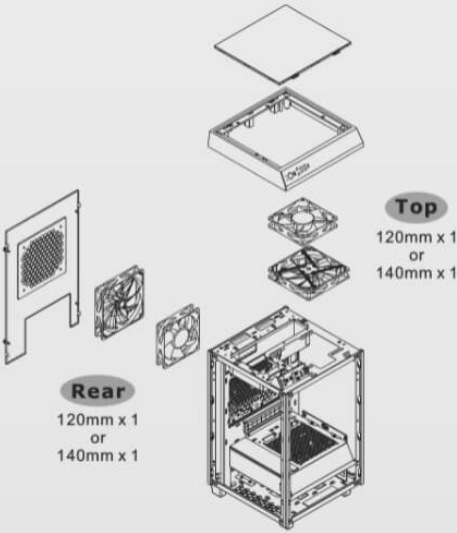
Fan Support List

Fan Compatibility List

	120mm	140mm	200mm
Rear	1	1	-
Top	1	1	-
Top of the PSU cover	1	1	-

Thermaltake Compatible Fans

	120mm	140mm	200mm
PURE FAN Series	•	•	-
Riing FAN Series	•	•	-



Additional Information

Brand	Thermaltake
SKU	CA-1R3-00S6WN-00
Weight	14.0000
Color	White
Chassis Form Factor	MiniITX
Side Panel	Window
Motherboard Support	Mini ITX

