

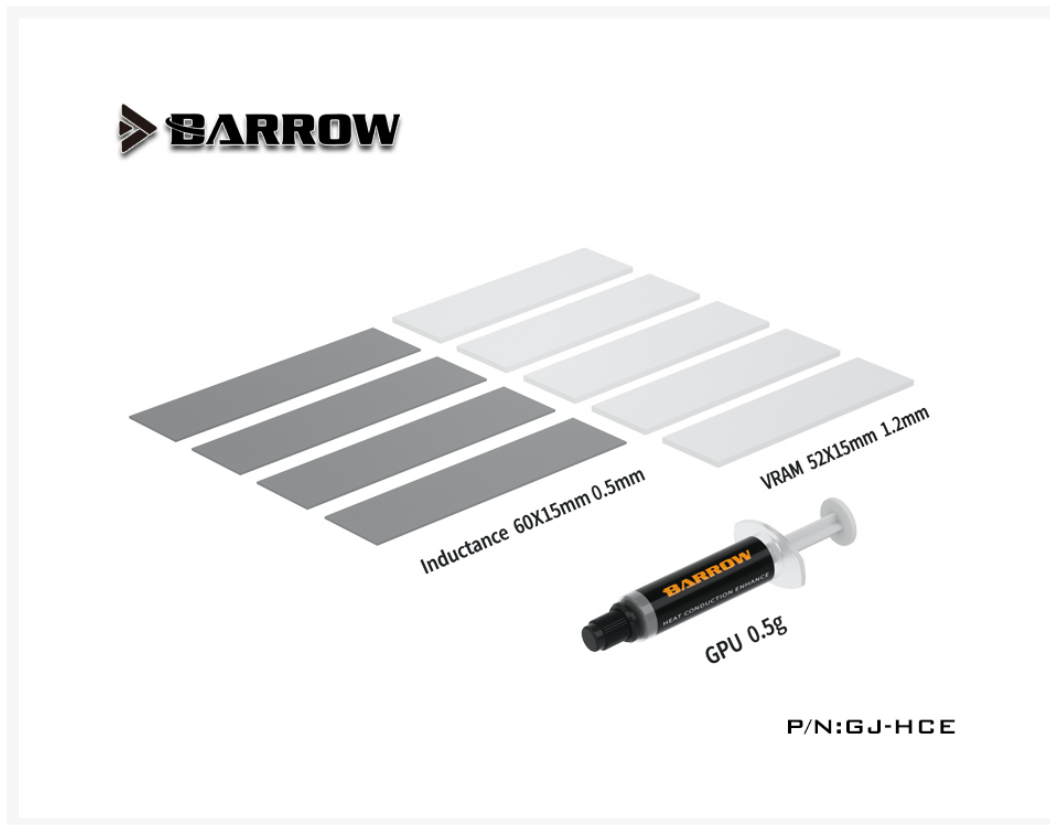


BARROW

Barrow Enhance Thermal Conductivity suite for graphics card water cooling

\$6.99

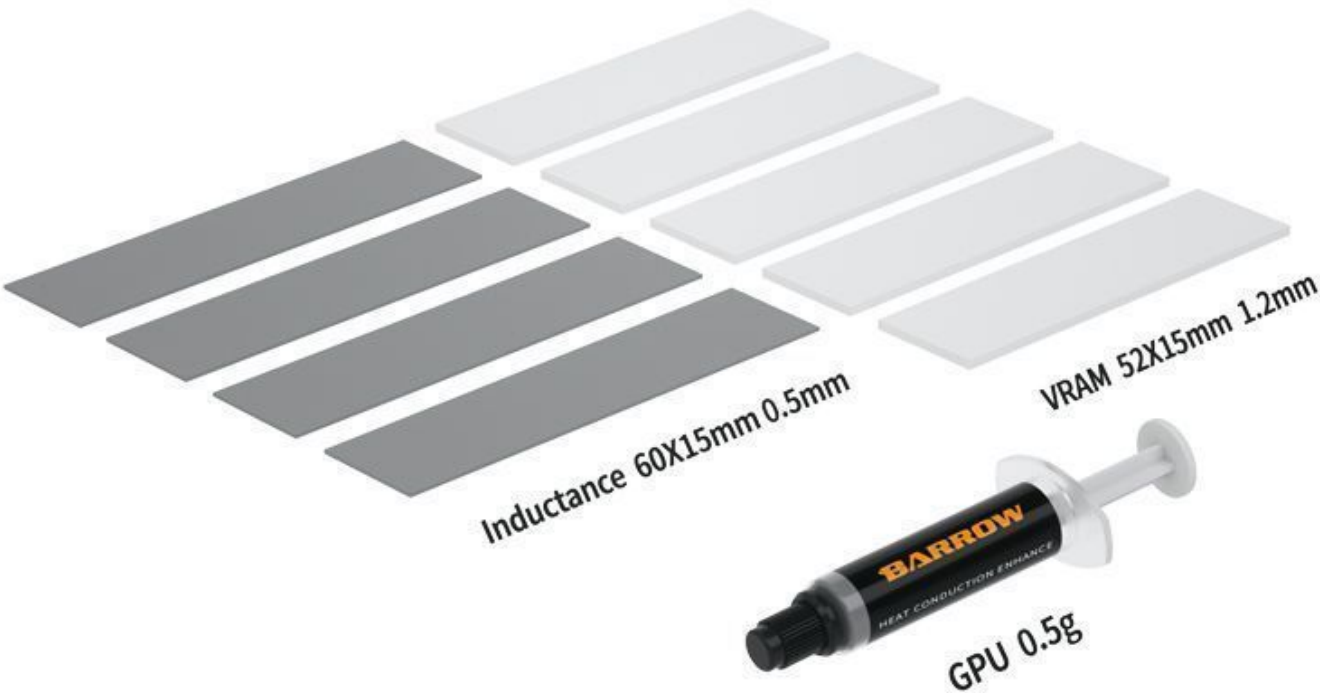
Product Images



Description

GJ-HCE

Barrow Enhance Thermal Conductivity suite for graphics card water cooling



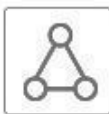
GJ-HCE



Cool down quickly



Tool



High stability



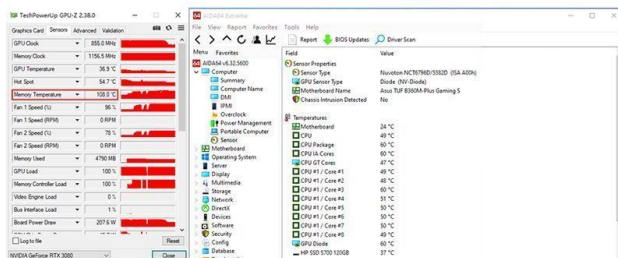
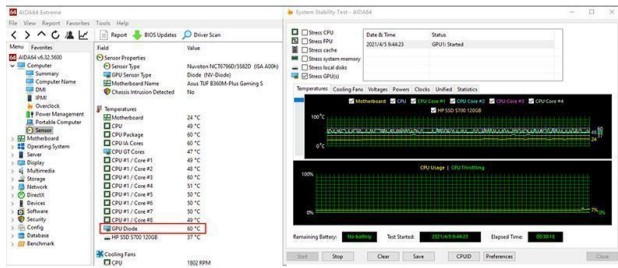
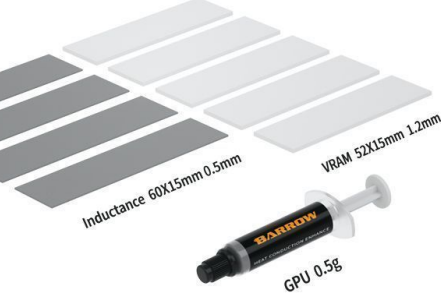
Convenient and fast

◇ Products information

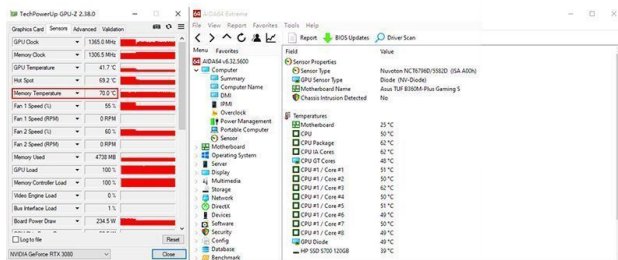
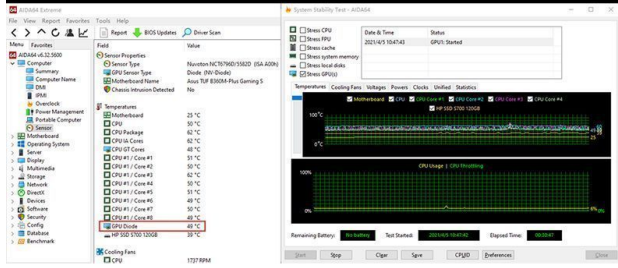
Mode: GJ-HCE	Color: White
Quantity: 1Set	Products Specifications: Thermal grease+Thermal pad
Thermal conductivity: Thermal pad: 8w/m-k Thermal grease: 13.4w/m-k	
Application: Suitable for filling fine gaps on the core surface and improving the efficiency of heat dissipation.	
Note: In case of product appearance structure upgrade,without further notice,in kind prevail	

VRAM straight decrease 30°C+

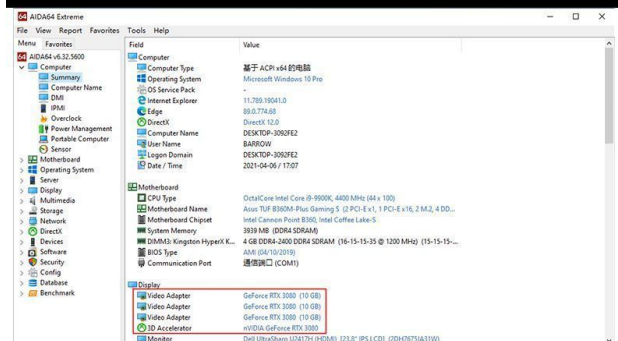
Under full load, when comparing the temperature of the set of heat conduction enhancement before and after use, the temperature will decrease by 30 °C and the strength is powerful.



·If don't use the enhance Thermal Conductivity suite, after 30mins continuous full load, the core temperature is 60°C and VRAM is 108°C



·After using the enhance Thermal Conductivity suite, after 30mins continuous full load, the core temperature is 49°C and VRAM is 70°C



·The current ambient temperature of the test platform is 19.5°C

The above data are from BARROW water cooling laboratory, the actual temperature will vary according to the hardware configuration and operating environment.

Additional Information

Brand	Barrow
SKU	GJ-HCE
Weight	0.1000
TIM Type	Paste
Vendor SKU/EAN	6937826615283

