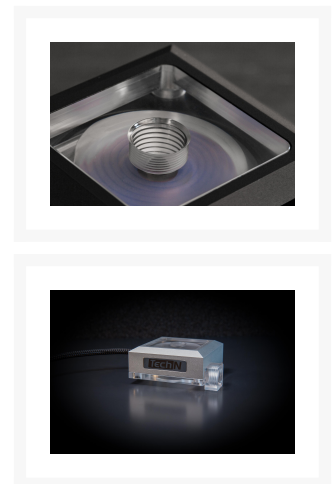
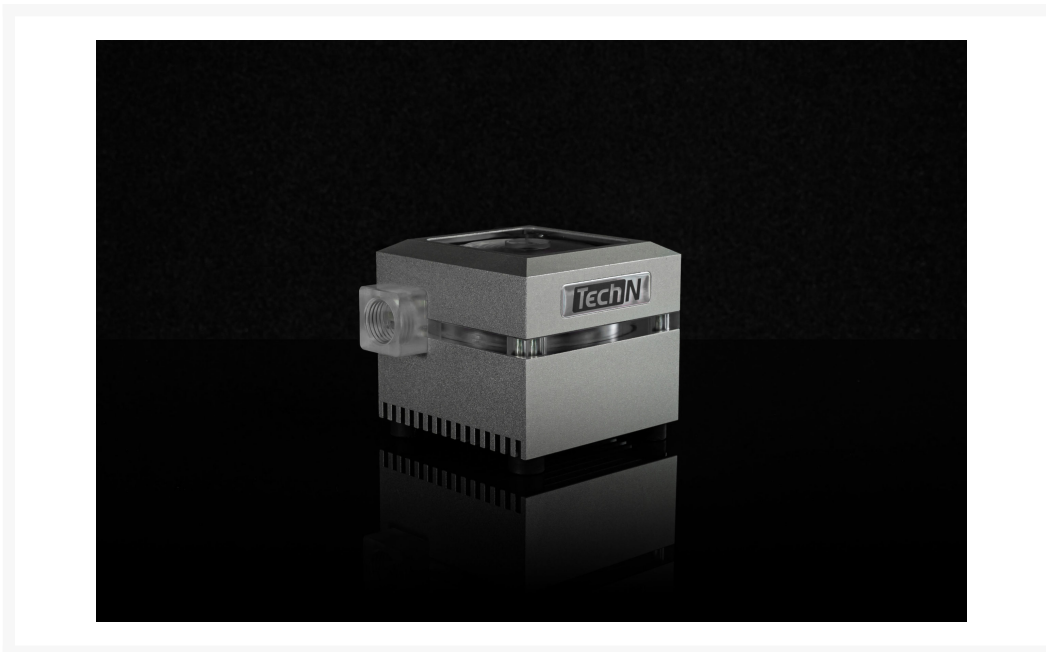




TechN TechN Pump DDC 3.2 Housing elox Silver

\$104.99

Product Images



Short Description

The TechN pump housing for the Laing DDC pumps enables maximum performance for the beating heart of any loop.

Description

The TechN pump housing for the Laing DDC pumps enables maximum performance for the beating heart of any loop.

Highest precision manufacturing ensures unparalleled product quality. A minimalist industrial design as well as a luxurious feel define this premium housing.

The TechN DDC pump housing brings the proven design and craftsmanship of the TechN product family to your pump



Features

- Premium Design:
Anodized aluminum cover, heat sink and inneracrylic glass form a single unit
- Seamless:
Minimal gap dimensions
Smooth transitions
- Performance:
Cooling fins
Flow-optimized acrylic insert
Top notch performance in its class
- Engineering:
Cover is optimized for minimum vibration and noise
Decoupling for quiet operation

360° RGB lighting

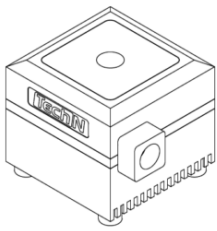
The Pump Housing and Top comes with a 4-pin 12V RGB LED strip.

Specifications

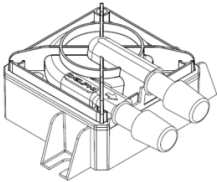
Included:

- Pump housing with G1/4" BSPP connector
- User manual
- 4 mounting screws for PC Case M4X4 (Housing only)

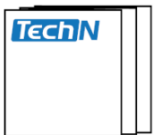
Laing DDC 3.2 18W + PWM water pump NOT included (optional)



Pump housing (or Top) with G1/4" BSPP connector



Laing DDC 3.2 18W + PWM water pump NOT included (optional)



User manual



4 mounting screws for PC Case M4X4 (Housing only)

Specification:

Material: Anodized Aluminum and Acryl

Dimensions Housing (HxWxL): 55,25mm-2.17" x 62mm-2.44" x 72mm-2.83" with rubber damper

Dimensions Top (HxWxL): 30mm-1.18" x 62mm-2.44" x 72mm-2.83"

Weight Housing: approx. 223g-7.86oz (without packaging)

Weight Top: approx. 140g-4.93oz (without packaging)

Compatible to: DDC pumps 3.2/ 4.2 and comparable

Additional Information

Brand	TechN
SKU	TN-00000311
Weight	0.2000
Color	Silver
Pump Type	DDC
Material	Aluminum
Vendor SKU/EAN	4260491551535

