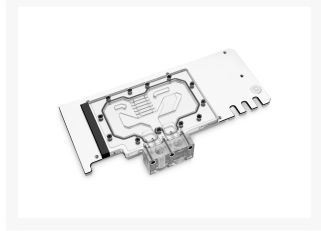
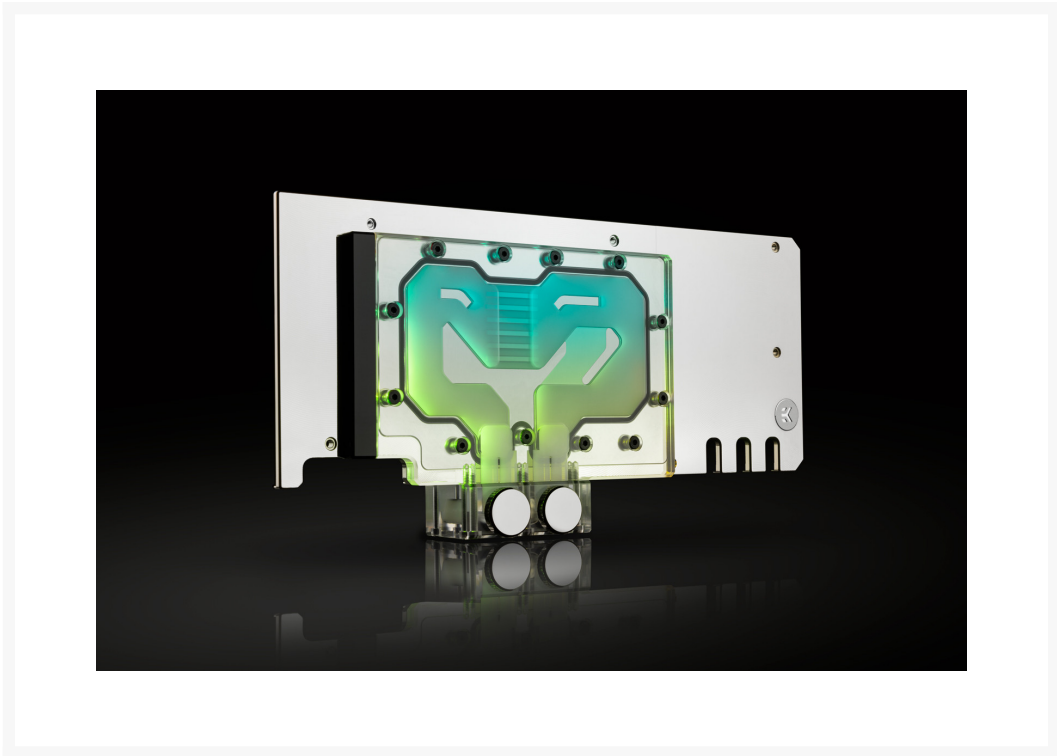


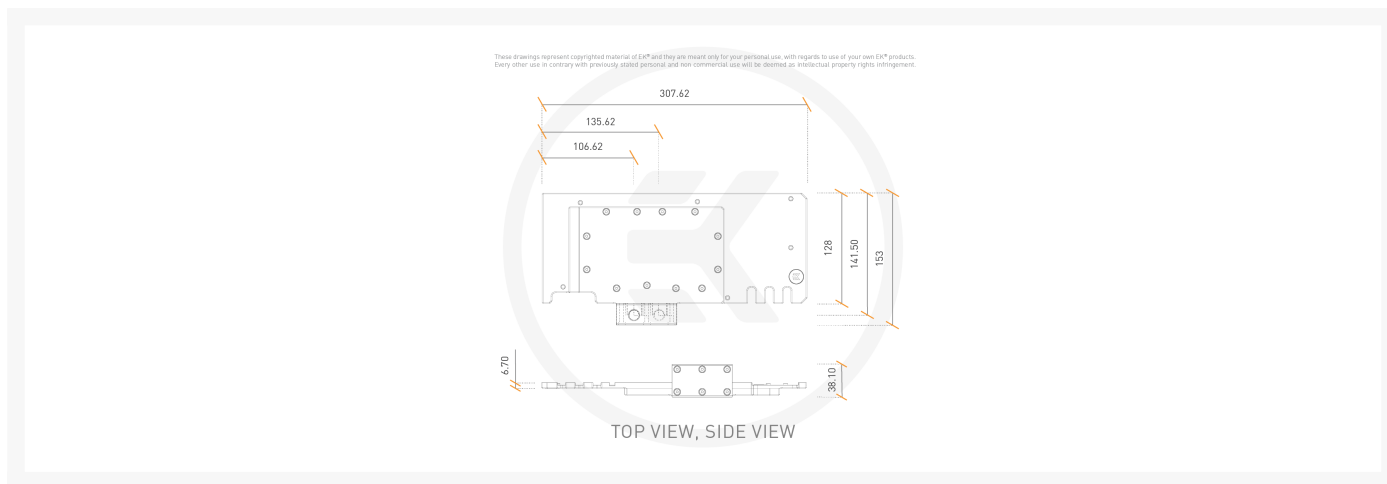


EK-Quantum Vector TRIO RTX 3080/3090 Active Backplate D-RGB - Plexi

\$167.99

Product Images





Short Description

EK-Quantum Vector TRIO RTX 3080/3090 Active Backplate D-RGB - Plexi is a cutting-edge addition to the EK® Quantum Line. It is made to complement the existing EK-Quantum Vector TRIO RTX 3080/3090 water blocks and actively cool the backside of all MSI® TRIO and SUPRIM GeForce RTX™ 3080 and 3090 GPU.

Description

This is the 2nd generation Vector GPU water block from the EK® Quantum Line, designed for MSI® Trio and Suprim RTX 3080 and 3090 graphics cards based on the latest NVIDIA® Ampere™ architecture. For a precise compatibility match of this water block, we recommend you refer to the [EK Cooling Configurator](#).

An EK water block for Trio RTX 3080 and 3090

EK-Quantum Vector Trio 3080/3090 D-RGB water block is compatible with Trio and Suprim RTX 3080 and 3090 graphics cards. The Vector water block actively cools the GPU, VRAM (on the front), MOSFETs, and chokes in the VRM (voltage regulation module). The water block contacts every single inductor in the VRM area to suppress any potential coil whine.

These newly developed water blocks feature optimized flow paths that reduce hydrodynamic instabilities and vortexing (dead spots) inside of them. Additionally, this new design allows the copper cold plate to extend almost the entire length of the PCB.



The EK-Quantum Vector Series water blocks use an Open Split-Flow cooling engine design, which proved to be a superior solution for GPU water blocks. It is characterized by low hydraulic flow restriction, meaning it can be used with weaker water pumps or pumps running on low-speed settings, and still achieve top performance. The jet plate and fin structure geometry have been optimized to provide even flow distribution with minimal losses and optimal performance when used in any given coolant flow orientation.

The fin array is populated by 30 microfins with 0.6mm wide microchannels that provide optimal cooling performance, without unnecessary flow restrictions or clogging hazards.

The base of the block is CNC-machined out of nickel-plated electrolytic copper, while its top is CNC-machined out of glass-like cast Acrylic. These 2nd generation Vector GPU water blocks also feature acetal terminals. The watertight sealing is ensured by high-quality EPDM O-rings, while brass standoffs are already pre-installed and allow for a safe and easy installation procedure.

D-RGB lighting on EK-Quantum Vector Trio RTX 3080/3090 D-RGB water block

The aesthetic corner end-piece is housing the addressable D-RGB LEDs. This water block boasts a total of 9 individually addressable RGB LEDs, and it is compatible with popular RGB sync technologies from all major motherboard manufacturers. The arrow marking on the 3-pin D-RGB LED connector is to be aligned with the +5V marking on the D-RGB (addressable) header.

Backplate for the EK-Quantum Vector Trio 3080/3090 water block

EK recommends the purchase of a [retention backplate](#), especially for the 3090 models of graphics cards. The backplate improves the overall aesthetics of your graphics cards and also provides additional passive cooling for the GPU core, VRAM on the 3090 cards, and backside of the printed circuit board VRM section.

Features

D-RGB lighting on EK-Quantum Vector TRIO RTX 3080/3090 Active Backplate D-RGB water block



MYSTIC
LIGHT



The aesthetic end-piece is housing the addressable D-RGB LED strip. This water block boasts a total of 5 individually addressable RGB LEDs, and it is compatible with popular RGB sync technologies from all major motherboard manufacturers. The arrow marking on the 3-pin D-RGB LED connector is to be aligned with the +5V marking on the D-RGB (addressable) header.

Warning:



- EK only guarantees compatibility with included EK-brand thermal pads. The installation process, cooling performance, and block contacts are tested exclusively with EK-brand thermal pads.
- Listed thermal pad thicknesses apply only to EK thermal pads which are included in the package.
- EK does not guarantee compatibility with aftermarket alternatives for thermal interface material.

Specifications

Enclosed:

- EK-Quantum Vector TRIO RTX 3080/3090 Active Backplate D-RGB - Plexi
- Necessary mounting screws, nuts, and washers
- 1x Nickel plated brass plug G1/4"
- EK-Loop Multi Allen Key (6mm, 8mm, 9mm)
- Thermal pads

Technical Specification:

- Dimensions: (LxHxW) - 307x153x38mm
- D-RGB cable length: 500mm
- D-RGB LED count: 5
- D-RGB connector standard 3-pin (+5V, Data, Blocked, Ground)

Made in Slovenia - Europe!

PLEASE NOTE:

- This block is made for MSI Trio, Suprim 3080 and 3090 cards. It is not a stand-alone unit and requires an EK-Quantum Vector Trio RTX 3080/3090 water block to pair with.
- Due to the immense variety of fittings/barbs available on the market, we guarantee compatibility only with EK fittings.
- This product should NOT be installed with any aluminum [Fluid Gaming](#) parts!
- The use of specifically engineered coolants that contain corrosion, scale, and biological inhibitors is mandatory to prevent damage to your nickel-plated water block! EK is offering a selection of such products in the [coolants](#) section.

Additional Info

| | |
|--|----------------|
| | Nickel Plexi |
| | G1/4 |
| | Nvidia GeForce |

Additional Information

| | |
|----------------|---------------------------------|
| Brand | EK Waterblocks |
| SKU | EK-QTM-VEC-TRIO-3080-90-ABP-NP |
| Weight | 3.5000 |
| Color | Silver |
| Vga | MSI RTX 3090/3080 Gaming X Trio |
| Block GPU Type | Nvidia |
| Block Style | Nickel-Plexi |
| Vendor SKU/EAN | 3831109859476 |

