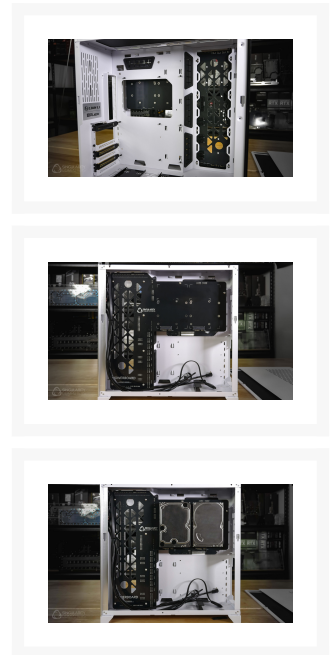


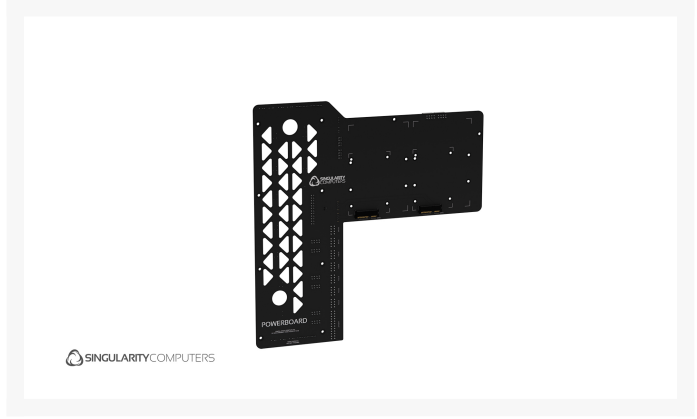
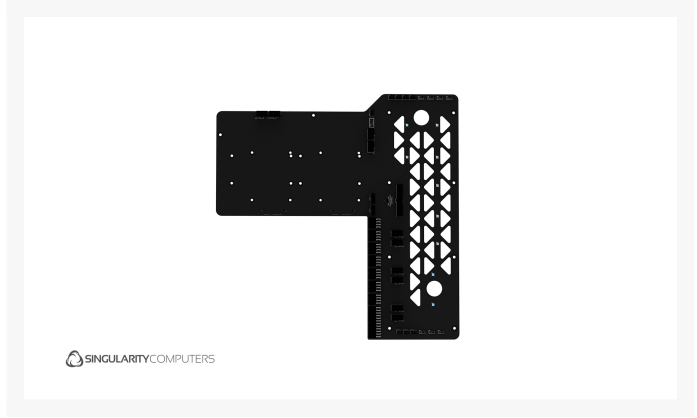


Singularity Computers PowerBoard for Lian Li PC- O11D

\$299.00

Product Images





Short Description

The SC PowerBoard PC-O11D fits onto the rear side of the motherboard tray in the Lian Li PC-O11D. It integrates 2x 2.5" or 3.5" drive mounting positions, ARGB and PWM hubs. It also has a position for an optional D5 Reservoir Distribution Plate available [here](#). It has integrated LEDs to light up the Distribution Plate. Integrating all these components into one component creates a far cleaner build!

Description

Introducing the Singularity Computers PowerBoard (US Patent Pending #547249821) a completely new take on computer cables and cable management. The idea first came about during the development of our first

case Spectre 1.0. We were looking for a far more advanced method of integrating cables and cable management.

The PowerBoard is essentially a distribution plate for cables. It integrates and routes the 24pin, EPS and PCIE cables very close to the components so that standardized short cables can be used. This means that cable management is no longer necessary. It integrates ARGB and PWM hubs and on some PowerBoards SATA. The PowerBoard also has integrated ARGB LEDs placed to light up the PowerBoard and/or surrounding components.

The purpose of the PowerBoard is to eliminate the need for cable management, to integrate components into a single clean unit reducing clutter, to create something different which will contribute to a unique build!

Features

Connections

24pin Input & Output.

8pin EPS Inputs x2 Outputs x4. (A total of 7 EPS and PCIE outputs can be used at the same time).

8pin PCIE Inputs x5 Outputs x6. (A total of 7 EPS and PCIE outputs can be used at the same time).

PWM Inputs x1 Outputs x7.

ARGB Inputs x1 Outputs x7.

SATA Data Inputs x2 Outputs x2.

Please refer to documentation for full details on the connectors and wiring/pinouts.

Latest Cable Information can be found [HERE](#)

Specifications

Specifications & Included Items

Singularity Computers PowerBoard PC-O11D.

Product Weight: 0.5kg.

Product Dimensions: H: 395mm x W: 391.5mm x Thickness: 16mm.

Packaged Dimensions: W: 395mm x L: 430mm x H: 40mm.

Packaged Weight: 1kg.

Fasteners:

6-32 x 0.25" Button Head Hex Black Steel: x8.

M3 x 4mm Button Head Hex Stainless Steel: x8.

M4 x 12mm Button Head Hex Stainless Steel: x4.

M4 x 6mm Button Head Hex Stainless Steel: x20.

M4 Female Stand Off Brass 10mm x 8.

M4 Female Stand Off Brass 50mm x 2.

M4 Male Threaded Standoff Brass 6.5mm (F) 10mm: x4.

Cables: RGB Extension Cable Black 50cm. PWM Fan Extension Cable Black Sleeved 50cm.

Installation

Installs onto the rear side of the motherboard tray, please refer to user manual and documentation.

Cables Information

The PowerBoard requires a PSU Linking Cable set and a PowerBoard Linking Cable set. Premade cable kits manufactured by CableMod, including the necessary 16 short connecting cables, to be offered in 7 gorgeous colors, and only for the most popular power supplies from EVGA, Corsair, Seasonic, and Asus. These will be available very soon! If you would like to make your own custom cables, please refer to the user manual and documentation for specifications. If you would like cables at the exact lengths required for your build, we suggest measuring them out exactly so that they match your components and configuration.

If you would like cables at the exact lengths required for your build, we suggest measuring them out exactly from your build so that they match your components and configuration.

If you would like to make your own custom cables, here is the information including the standard cable lengths:

PowerBoard Linking Cables: Motherboard and GPU Side: 1:1 Cables with female connectors on both sides. There are two lengths on some cables because the inner wires need to be shorter for the tight bend, the inner cable needs to be 93.5% of the length of the outer cable.

24pin: 18.7/20cm.

8pin EPS: 18.7/20cm.

4pin EPS: 18.7cm/20cm.

8pin PCIE: 30cm.

3-pin to 6pin PCIE: 30cm.

PSU Side Cables: PSU specific pinouts with female connectors on both sides. They are compatible across all PowerBoards.

24pin PowerBoard PSU Cable Set: 30cm.

8pin EPS: 30cm.

8pin PCIE: 30cm.

Latest Cable Information can be found [HERE](#)

Additional Information

Brand	Singularity Computers
SKU	SC-PB-PCO11D
Weight	7.0000
Color	Black
Case Accessory Type	Power Extension

