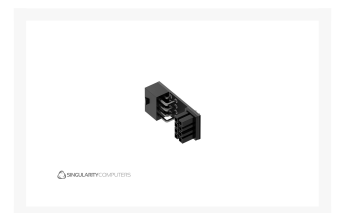
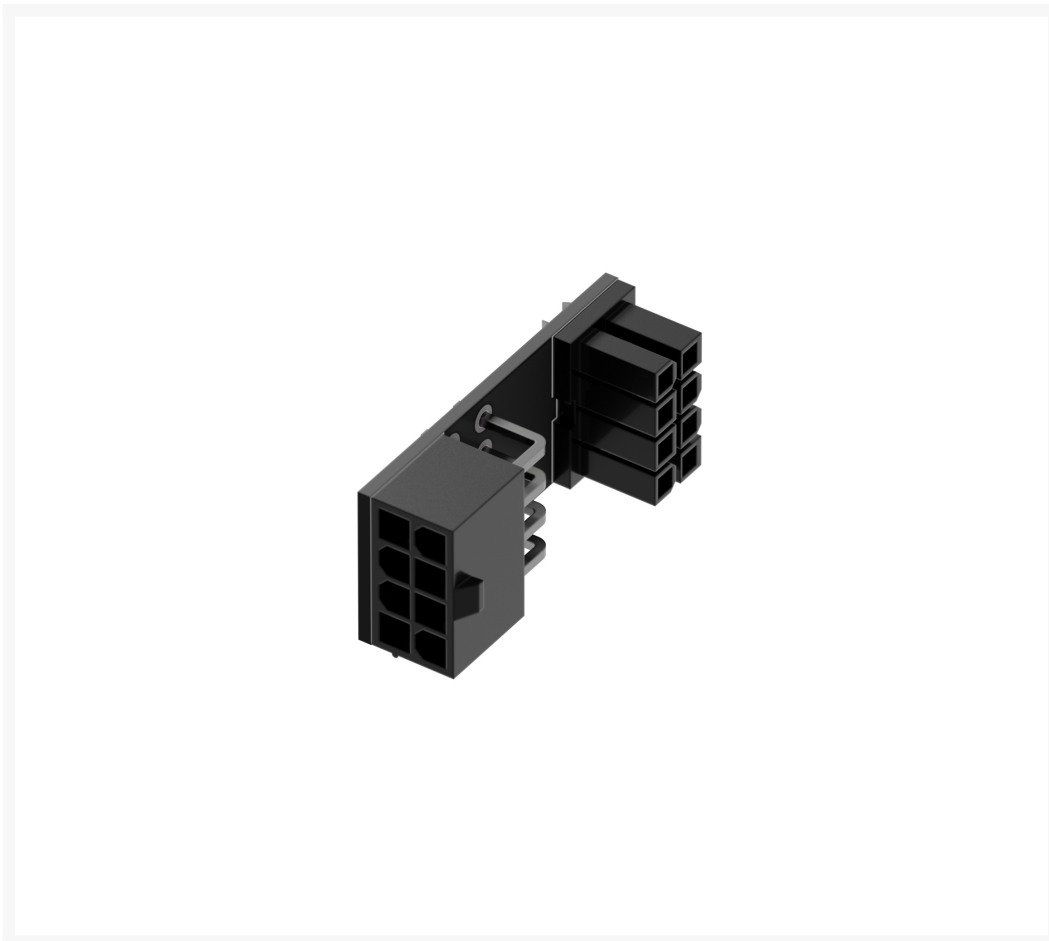




Singularity Computers Shift Motherboard 8pin PCIE 90 Degree Adapter

\$14.95

Product Images





Short Description

Singularity Computers Shift 24pin, EPS and PCIE adaptors are designed for use with the SC PowerBoard but can be used with any components or cables. The PCBs are custom designed with high quality components and a dual layer PCB. The PCB and connectors are black, and the PCBs have white logos and labeling. SC Shift Adapters provide a range of options for cleanly routing your cables.

Description

Singularity Computers Shift 24pin, EPS and PCIE adaptors are designed for use with the SC PowerBoard but can be used with any components or cables. The PCBs are custom designed with high quality components and a dual layer PCB. The PCB and connectors are black, and the PCBs have white logos and labeling. SC Shift Adapters provide a range of options for cleanly routing your cables.

The SC Motherboard 6pin PCIE and 8pin EPS 90 Degree Adapters are designed to be used with the SC PowerBoard and motherboards with 90-degree 8pin EPS and supplementary 6pin PCIE connectors. It solves the problem of the connectors being too close together to make a clean connection with sleeved cables and the problem of the 180-degree flipped pinout. With this adaptor you can connect sleeved cables from your SC PowerBoard to your motherboard without the cable being twisted.

Features

Experience Singularity:

We create the products we want in our builds based on our 15 years of experience building high end computers. All our designs begin with function, versatility is vital to increase the possibilities so that you can create the build you want to, something unique. Our products are premium, we do not hold back on quality to save cost. All our products use the most high-end available materials and manufacturing processes. Our vision is to continue to introduce unique and exciting ideas, to inspire and lead the industry.

Specifications

Specifications & Included Items:

- SC Motherboard 8pin EPS or 6pin PCIE 90 Degree Adaptor: Black PCB and Connectors with white logos and printing.
- Dimensions: H: 15mm x W: 19mm x L: 34mm.
- Weight: 0.01kg.
- Packaged Dimensions: H: 15mm x W: 45mm x L: 90mm.
- Packaged Weight: 0.01kg.

Installation:

Install onto your motherboard 90-degree 24pin connector so that you can use a sleeved 24pin cable between your motherboard and SC PowerBoard.

Additional Information

Brand	Singularity Computers
SKU	SC-A-90-PCIE8
Weight	0.1000
Color	Black
Case Accessory Type	Power Extension
Vendor SKU/EAN	9351182003282

