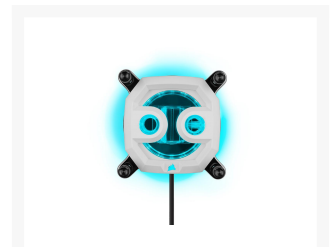
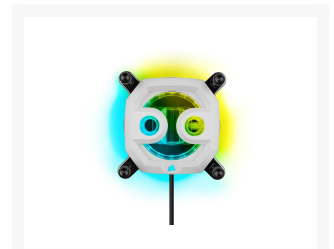
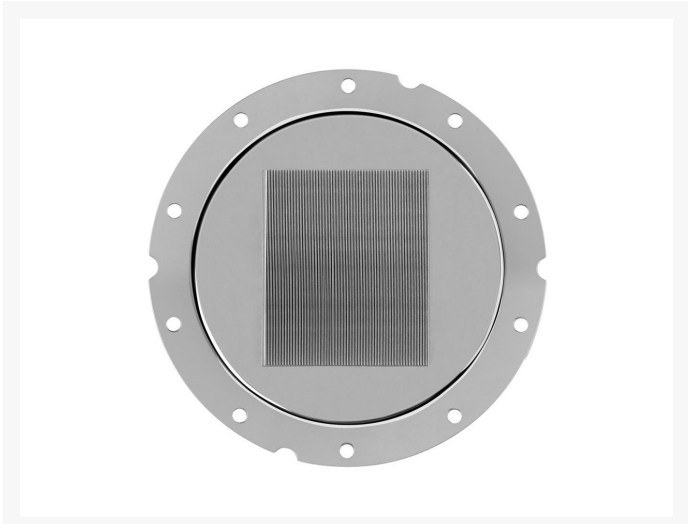
 **CORSAIR Hydro X Series
XC7 RGB PRO CPU Water
Block (1700/1200/AM4) -
White**

\$89.99

Product Images







Item Demonstration

Short Description

The CORSAIR Hydro X Series XC7 RGB PRO CPU Water Block combines premium construction, vivid RGB lighting, a titanium matte white trim, and extraordinary cooling performance with an advanced nickel-plated copper cold plate and more than 110 micro-cooling fins.

Description

The CORSAIR Hydro X Series XC7 RGB PRO CPU Water Block combines premium construction, vivid RGB lighting, a titanium matte white trim, and extraordinary cooling performance with an advanced nickel-plated copper cold plate and more than 110 micro-cooling fins.

A precision-machined copper cold plate with more than 110 high-efficiency micro-cooling fins, combined with an innovative quad-split flow design, efficiently draws heat away from your CPU, reducing temperatures by up to 4°C lower than the previous generation XC7 RGB.

Built from durable nylon with reinforced standard G1/4" threads, the XC7 RGB PRO will keep your CPU running at its best, and coolest, for years to come.

16 Individually addressable RGB LEDs deliver 360° of stunning customizable RGB lighting effects. Add a CORSAIR iCUE Controller (sold separately) and powerful CORSAIR iCUE software to customize and sync RGB lighting across all your iCUE-compatible products including other water blocks, pumps, fans, keyboard, and more.

A transparent flow chamber shows off your coolant and enhances RGB lighting.

Includes a 5V ARGB motherboard adapter cable to alternatively control lighting via compatible motherboards.

Easy and fast installation on Intel LGA 1700, LGA 1200, LGA 115X, or AMD Socket AM4 with pre-installed mounting screws and pre-applied thermal material.

Features

- Extraordinary Cooling Performance
- Durable Nylon Construction with Reinforced Standard G1/4" Threads
- Vivid Integrated RGB Lighting
- See Your Cooling
- 5V ARGB Motherboard Adapter Cable Included
- Easy to Install

Specifications

Model

| | |
|---------------|---------------|
| Brand | CORSAIR |
| Series | XC7 RGB PRO |
| Model | CX-9010016-WW |
| Type | CPU Block |

Block

| | |
|----------------------------|---|
| Block Compatibility | Intel LGA 1700 / 1200 / 115x AMD AM4 |
| Block Material | Nickel-Plated Copper |

Fan

| | |
|------------------|-------|
| Color | White |
| LED Color | RGB |

Other Specification

| | |
|----------------------|---|
| Specification | Cold Plate Fins: 110+ Fluid Chamber Material: Nylon Compatible Materials: Only mix with other copper / brass products Compatible Coolants: CORSAIR XL or equivalent Port Thread: G1/4" BSPP Thermal Material: Pre-applied thermal paste Required Controller For iCUE Support: CORSAIR Commander pro / Commander Core XT / Lighting Node PRO |
|----------------------|---|

Package Contents

| | |
|-------------------------|--|
| Package Contents | XC7 RGB PRO CPU Water Block Backplate RGB adapter cable Quick Start Guide Intel LGA 1200/1700 bracket with pre-installed mounting screws AMD AM4 bracket with pre-installed mounting screws |
|-------------------------|--|

Additional Information

| | |
|----------------|---------------------------------|
| Brand | Corsair |
| SKU | CX-9010016-WW |
| Weight | 2.5000 |
| Color | White |
| CPU Series | Intel 1700, 1200, 115x, AMD AM4 |
| Block CPU Type | Intel/AMD |
| Block Style | Copper-Nickel |
| Vendor SKU/EAN | 840006644712 |

