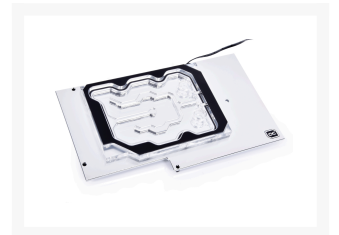
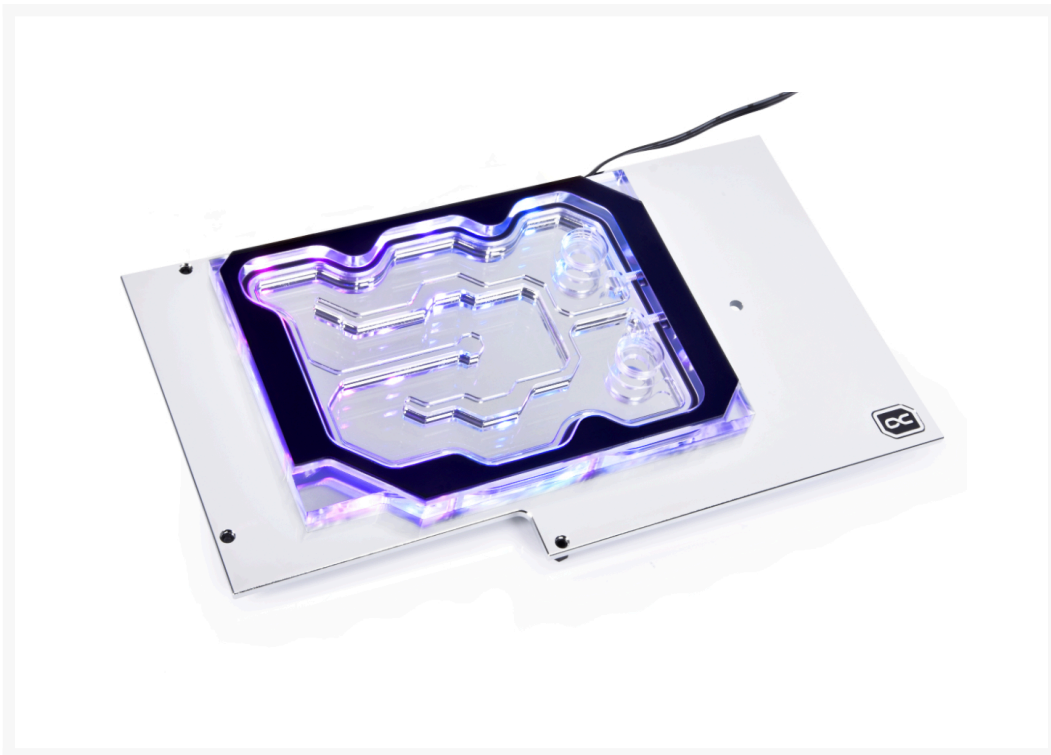


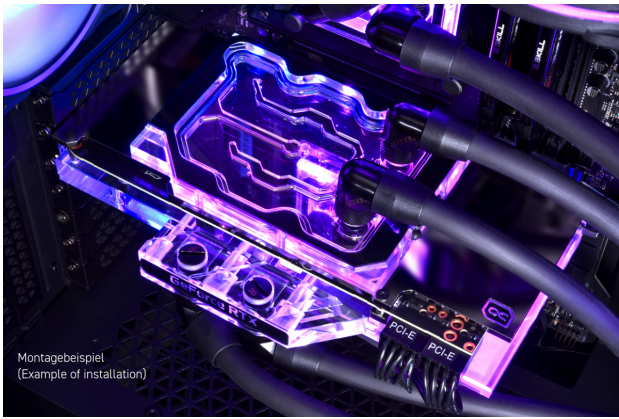


# Alphacool Eisblock Aurora Acryl Active Backplate 3090 Founders Edition

Special Price  
**\$70.36** was  
**\$87.95**

## Product Images





## Short Description

The Alphacool Eisblock Aurora GPX-N Acrylic Active Backplate for Geforce RTX 3080/3090 graphics cards is the perfect upgrade for Alphacool's Eisblock Aurora Acrylic GPX-N GPU custom water coolers as well as Alphacool's Eiswolf 2 GPU AIOs (see compatibility details). With the help of the backplate, consisting of nickel-plated copper, the back of Geforce RTX 3080/3090 graphics cards can now also be actively water-cooled, thus achieving a significant increase in cooling performance.

## Description

The Alphacool Eisblock Aurora GPX-N Acrylic Active Backplate for Geforce RTX 3080/3090 graphics cards is the perfect upgrade for Alphacool's Eisblock Aurora Acrylic GPX-N GPU custom water coolers as well as Alphacool's Eiswolf 2 GPU AIOs (see compatibility details). With the help of the backplate, consisting of nickel-plated copper, the back of Geforce RTX 3080/3090 graphics cards can now also be actively water-cooled, thus achieving a significant increase in cooling performance.

## Features

---

### Connection options

There are 2 different ways to incorporate the backplate into your existing watercooling loop:

#### Variant 1

The cooler has an inlet and outlet with G1/4" internal thread on the top side respectively. With suitable connections and hoses/hard tubes, the backplate can be easily integrated into the water circuit.

#### Variant 2

The cooler has an inlet and outlet on the side suitable for 5/3mm hoses. With the help of Alphacool's MCX 2x manifold with 5/3mm tubing (item 1022250), the active backplate can be easily integrated into the water circuit in a space-saving way. This variant is a sensible choice if there is little space in the PC case and tubing runs will be difficult to do. (Note: Only works with Eisblock Aurora Acryl/ES Acetal GPX-N GPU custom water coolers. Cannot be used in combination with Alphacool Eiswolf 2 AIOs!)

The connection options are very flexible for both variants, as the inlet and outlet can be freely selected depending on the design.

### Brilliant illumination

Six addressable digital RGB LEDs are directly recessed and run along the sides of the entire cooling block. This illuminates the entire cooling block and creates unique lighting effects. The Digital aRGB LED lighting is connected via a JST 3-pin connector and can be controlled with a Digital RGB controller (e.g. Alphacool Aurora Eiscontrol, Art.15360) or a Digital RGB capable motherboard.

## Specifications

---

### Compatibility:

- Alphacool Eisblock Aurora Acryl GPX-N RTX 3090 Founders Edition with backplate (article number: 11941)

### Technical data

L x W x H	206,54 x 120,71 x 13,3 mm
Material backplate	copper, nickel-plated
Material cooler	acrylic
Threads Water cooling	2x G1/4"   2x 5/3mm tube connection
Illumination	6x digital addressable RGB LEDs
Power connector digital aRGB LEDs	3-pin JST (male & female switch)
Power digital aRGB LEDs	5V
Maximum working temperature	60 °C

Pressure tested 0,8 Bar

Weight 704 g

#### Note on application

Please use only in conjunction with clear transparent water cooling fluids. The particles and additives in Pastel liquids can clog and permanently damage water cooling products such as radiators, pumps, coolers and hoses. This can result in voiding the manufacturer's warranty as well.

Manufacturer: Alphacool

Hint: Compatible till 16/13mm straight, Compatible till 9/13mm angled

Hardware manufacturer: NVIDIA

Cooling plate material: Copper plated

Top cover material: Acryl

Hardware model: RTX 3090

Cooler model: aktive Backplate

Dimensions: 206,54 x 120,71 x 13,3mm

Connector: 2x G1/4" | 2x 5/3 MCX

## Additional Information

---

Brand	Alphacool
SKU	AC-13039-D
Weight	3.5000
Color	Silver
Vga	NVIDIA GeForce RTX 3090 Founders Edition
Block GPU Type	Nvidia
Block Style	Nickel-Plexi
Vendor SKU/EAN	4250197130394
Special Price	\$70.36

