

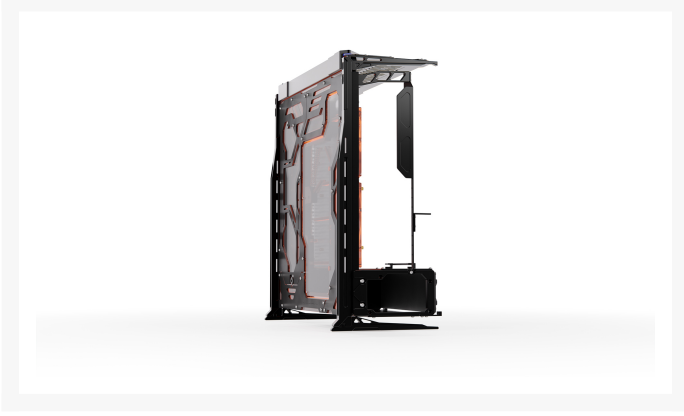
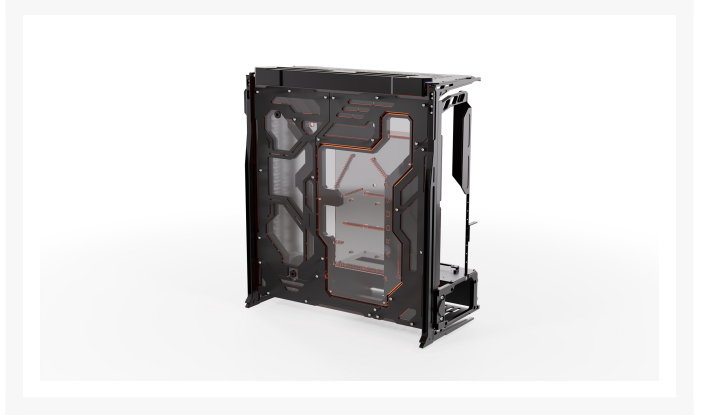


Singularity Computers Spectre 3.0 Arduus Case - Black

\$1,999.00

Product Images





Short Description

Spectre 3.0 Ards has a unique distribution plate with 4 layers, a front clear layer, then a black layer, then a grey tinted layer and then a black frosted layer on the back. The original theme idea for Ards was inspired

by the spacecraft from the 2021 Dune film. It is also inspired by fighter aircraft such as the F22, F35 and others.

Description

Spectre 3.0 ArduS has a unique distribution plate with 4 layers, a front clear layer, then a black layer, then a grey tinted layer and then a black frosted layer on the back. The original theme idea for ArduS was inspired by the spacecraft from the 2021 Dune film. It is also inspired by fighter aircraft such as the F22, F35 and others. The frosted black layer on the back of the distribution plate is divided into four separate pieces which can be removed to be modified. These sections can be laser etched, painted, and we will be releasing different colored sets. The case can be used without the black frosted rear layer, and then it becomes a unique dark version of Spectre 3.0. The distribution plate has twice the reservoir volume of the stock Spectre 3.0. There is a glowing logo on the back of the distribution plate. The PSU Side and Front Shrouds both have a different design with far more detail and the PSU Front Shroud has an integrated ARGB LED strip Note: Spectre 3.0 ArduS is fully compatible with the Spectre 3.0 PowerBoard and Spectre 3.0 Elite.

Features

FEATURES

Integrated Liquid Cooling Features:

Reservoir, D5 Pump Top, D5 Pump Cover, Fill Port, Drain Port, roughly half of the cooling loop.

Integrated Cable Management Features:

Cable management channels with cable combs. 3x 8pin EPS on the left side of motherboard and up to two above the 24pin. 24pin Cable. SATA Data x2.

6x PCIE go through the PSU Top Shroud.

Reduced build time due to integration:

With the pump and reservoir combo and roughly half of the loop integrated there is less assembly to be done. Also, less fittings and tube are needed.

Cable management is also quicker, just clip your cables into the integrated cable combs and they are all perfectly aligned.

Integration Cost Component:

A large portion of the case cost is due to the integration. These are components you do not have to purchase for your build. The pump and reservoir combo, less fittings, less tube, no cable combs, or cable management components.

Compatibility:

Theoretically the more integration the less compatibility. For Spectres integration the position of each integrated port and cable routing hole was carefully chosen based on statistics and our experience.

Integration & Optimization:

With the integration we did not just develop a case, we also had to develop all the integrated components.

This meant that we could focus more on optimization than would normally be possible. The integrated loop routes in Spectre allow for more flow than 16mm tubes.

The pump top was designed for the D5 pump, maximizing flow to and from the distribution plate.

The reservoir was designed to remove air as quickly as possible making the loop easier to fill.

The fill port is at the highest point on the back for the case and the drain point at the lowest point.

The cable channels and combs are designed for 4mm sleeved cables. They can be clipped in very quickly and there is far less work to do for clean cable management.

High End Components:

Spectre 3.0 fits XL-ATX motherboards and has 8 expansion slots. It is designed for fit up to two RTX 3090s. It can fit the largest PSUs up to 220mm. For the cooling system it can fit 2x 360mm radiators 60mm thick with a single set of fans or 2x 360mm radiators 40mm thick with two sets of fans, and the powerful D5 pump.

Radiator Adjustment:

The radiator mounts have a large range of adjustment to help with port alignment to the distribution plate.

Storage:

Spectre 3.0 has 6x 2.5" Drive positions. Two are on the top of the PSU shroud and there are four inside of the PSU shroud. The two on top of the PSU shroud cannot be used with vertically mounted GPUs.

Specifications

SPECIFICATIONS

Water-cooling Integration: Reservoir, Pump Top, Pump Cover, Fill Port, Drain Port, Part of cooling loop.

Ports: x6 G1/4" BSPP. 1x Fill Port. 1x Drain Port.

Pump: (Not included): Compatible with all D5 pumps.

LED Strips: 5 integrated ARGB LED Strips, 1 in the distribution plate, 1 in the PSU shroud and 3 in the case panels.

Motherboard Form Factor: XL-ATX (Up to: 285mm Wide & 343.5mm High).

E-ATX, ATX, Mini-DTX, Mini-ITX.

Expansion Slots: x8.

Case Form Factor: Mid Tower.

Package Dimensions: L: 640mm W: 620mm H: 110mm (Case comes flat packed).

Package Weight: 19kg.

Case Dimensions: L: 545mm H: 595mm W: 254mm.

Case Weight: 16kg.

Storage: 6x 2.5". 4 can be used at the same time. 2 are on top of the PSU shroud and cannot be used with vertically mounted GPUs. 4 are inside of the PSU Shroud.

Radiators: 360mm x 60mm with 1 set of standard 25mm fans or 360mm x 40mm with 2 sets of standard 25mm fans.

Maximum GPU Length: 500mm.

Maximum GPU Height: 170mm in standard orientation. Unlimited in vertical orientation.

Maximum CPU Cooler Height: 170mm.

Maximum PSU Length: 230mm (Space allowed for cables).

Front Panel I/O: No Front I/O. Vandal Switch 16mm. White LED.

Vertical GPU Mount: x1 included. (2nd Vertical GPU Available Separately). Vertical GPU Ribbon Cable 280mm: PCIE 3.0.

Vertical GPU Slot Spacing: x3 Slots (60mm).

Materials: 6061 Aluminum Anodized. Cast Acrylic. Stainless Steel.

Manufacturing Process: CNC Mill, CNC Router.

Assembly: Distribution Plate Assembled by Hand. Metal Components need to be assembled by the customer.

Testing: All Distribution Plates are factory pressure tested.

INCLUDED ITEMS

Spectre 3.0 Ardu Case: x1.

- Integrated Components:
 - Reservoir: x1.
 - Pump Top: x1.
 - Pump Cover: x1.
 - Fill Port: x1.
 - Drain Port: x1.
 - Cable Combs: x1.
- Hex Keys:
 - M3: x1
 - M4: x1.
 - M6: x1.
- Microfiber Cloth: x1.
- Stop Fittings: x2.
- 5v ARGB LED Strip: x5.
- 6mm Clear Cast Acrylic Side Panel Window: x1.
- Vertical GPU Mount: x1.

Additional Information

Brand	Singularity Computers
SKU	SC-SPECTRE-3-ARDUS-BK
Weight	55.0000
Color	Black
Chassis Form Factor	Mid-Tower
Side Panel	Window
Motherboard Support	ATX, E-ATX, Mini DTX, Mini ITX, XL-ATX
Material	Acrylic, Aluminum, Stainless Steel
PSU Wattage	No PSU
Vendor SKU/EAN	9351182003374
Special Price	\$1,599.20

