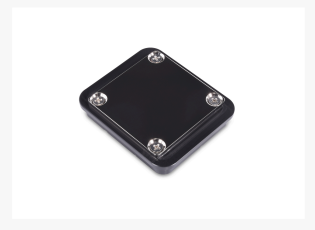




Alphacool Core XP³ Acetal

\$40.95

Product Images





Short Description

With the Alphacool Core XP³ Acetal light you get a very compact CPU water block for all current mainstream sockets from AMD and Intel. It offers the typical high Alphacool quality paired with excellent performance at a fantastic price.

Description

With the Alphacool Core XP³ Acetal light you get a very compact CPU water block for all current mainstream sockets from AMD and Intel. It offers the typical high Alphacool quality paired with excellent performance at a fantastic price.

Compatibility:

Intel: 1056 / 1155 / 1150 / 1151 / 1200 / 1700 / 2011 / 2011-3 / 2066

AMD: AM4 / TR4 / sTRX4 / sWRX / SP3

Features

High cooling capacity!

The cooling plate has been optimised to give the best performance for the price point. The nickel-plated copper radiator bottom has a surface area of 56 x 56 mm with a cross-slot structure and only 0.4 x 1 mm thick pins through which the water can flow. Due to the extremely large cooling surface, the water can effectively absorb the heat from the radiator bottom and remove it from the CPU area. The pin area is about 27.6 x 37.6 mm ensuring that most mainstream CPUs are covered completely which guarantees high cooling performance. The new multiple slotted nozzle plate was developed especially for this cooler to achieve a perfect interplay of water flow and inflow of the base plate. Only the combination of all these little things ensures the high performance.

Quick assembly!

The mounting bracket is simply put over the CPU cooler. All mounting screws can be pre-assembled onto this. Then you can simply screw it down. A well-illustrated manual with large render graphics is included so that the installation is easy to understand.

Specifications

Technical data

L x W x H 73 x 63 x 21mm

Weight 113g

Max working temperature 60°C

Material cooling plate nickel plated copper

Material cooler top Acetal

Connections 2 x G1/4"

Manufacturer: Alphacool

Cooling plate material: Copper

Socket: Intel 2011(-3), Intel 2011(-3) narrow ILM, AMD AM4, Intel 2066, AMD TR4, AMD SP3, Intel LGA 1200, Intel 115x, AMD sWRX8, AMD sTRX4, Intel LGA 1700

Connector: 2xG1/4

Top cover material: Acetal

Dimensions (L x B x H): 73 x 63 x 21mm

Note on application

Please use only in conjunction with clear transparent water cooling fluids. The particles and additives in Pastel liquids can clog and permanently damage water cooling products such as radiators, pumps, coolers and hoses. This can result in voiding the manufacturer's warranty as well.

Additional Information

Brand	Alphacool
SKU	AC-13058
Weight	1.2000
Color	Clear
CPU Series	Intel: 1056 / 1155 / 1150 / 1151 / 1200 / 1700 / 2011 / 2011-3 / 2066 AMD: AM4 / TR4 / sTRX4 / sWRX / SP3
Block CPU Type	Intel/AMD
Block Style	Acetal/POM
Vendor SKU/EAN	4250197130585
Internet Reviews	

