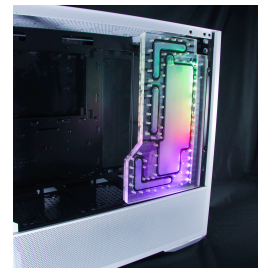
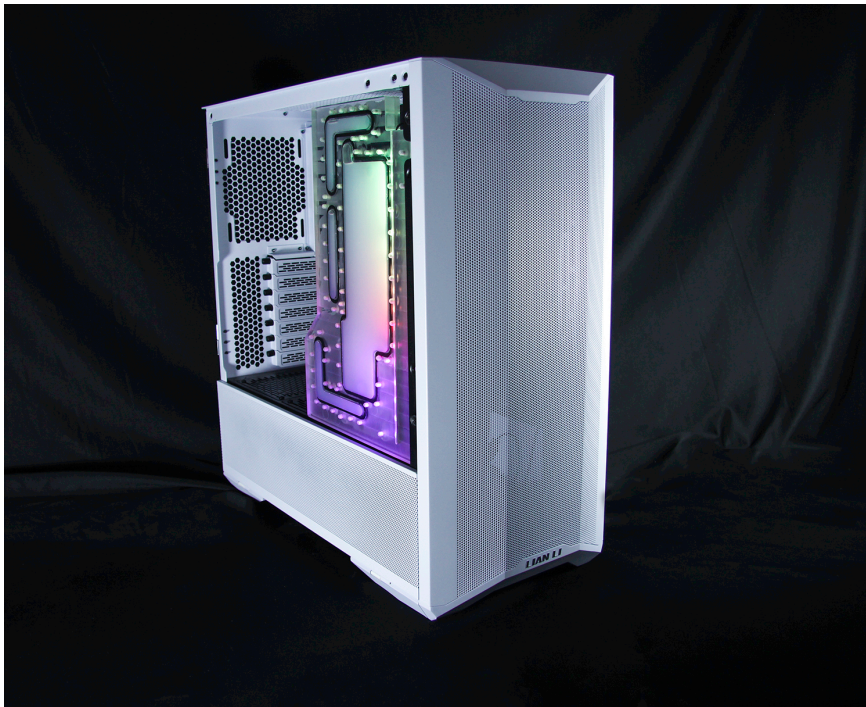


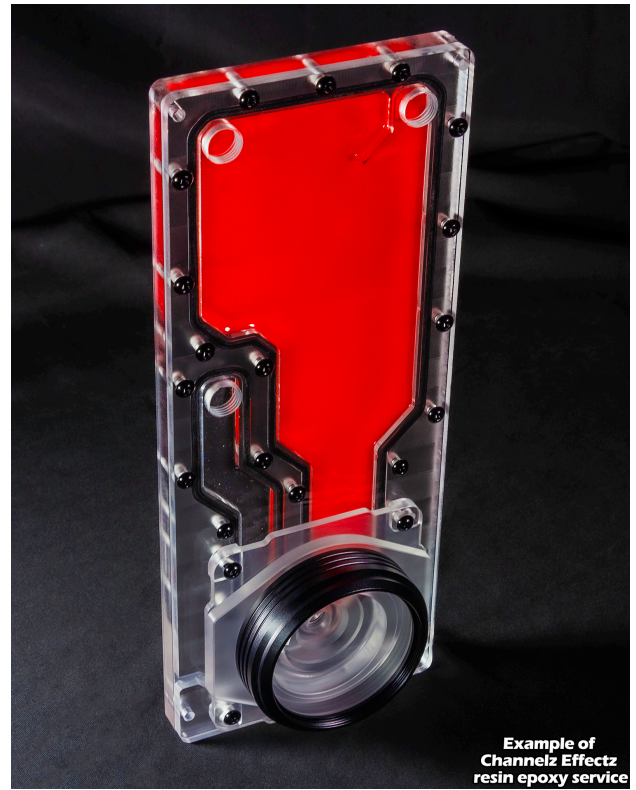


Channelz™ LANCOOL II & III MESH Side Distribution Plate

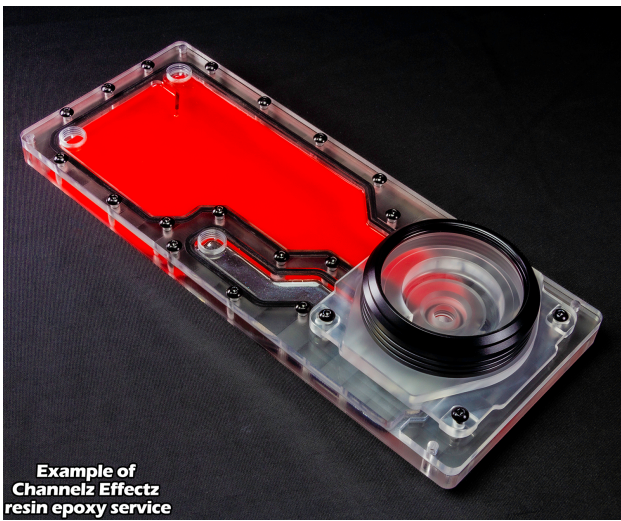
\$279.95

Product Images

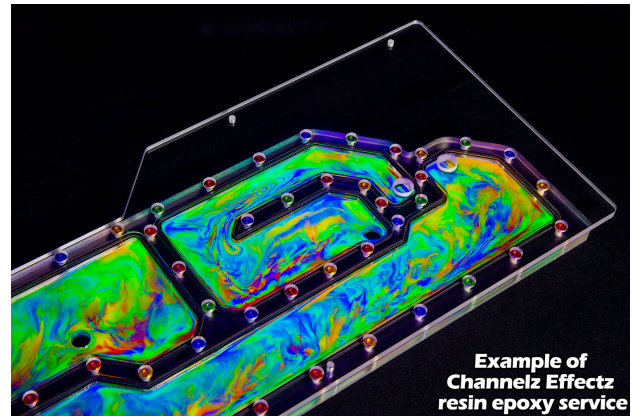




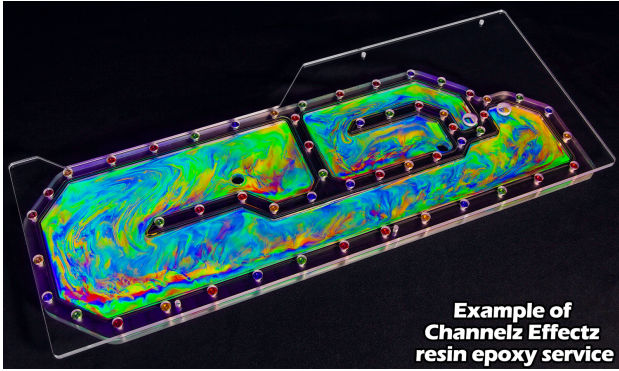
Example of Channelz Effectz resin epoxy service



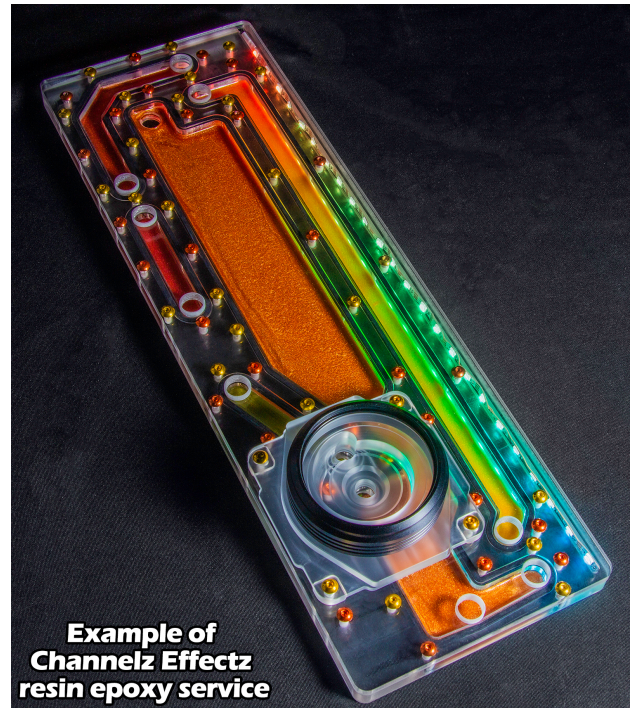
Example of Channelz Effectz resin epoxy service



Example of Channelz Effectz resin epoxy service



**Example of
Channelz Effectz
resin epoxy service**



**Example of
Channelz Effectz
resin epoxy service**



**Example of
Channelz Effectz
resin epoxy service**

Short Description

Channelz™ Designed and manufactured in the USA by Performance PCs.



This distroplate pump res combo is specifically designed to fit into the LANCOOL II MESH case to the glass side panel side of the case. Featuring 7 Ports total, designed to be used with 1 or 2 radiators and integrated D-RGB for stunning lighting effects. This distro plate is also compatible with standard D5 or DDC pumps.

Description

Designed and manufactured in the USA by Performance PCs.



This distroplate pump res combo is specifically designed to fit into the LANCOOL II MESH case to the glass side panel side of the case. Featuring 7 Ports total, designed to be used with 1 or 2 radiators and integrated D-RGB for stunning lighting effects. This distro plate is also compatible with standard D5 or DDC pumps.

Channelz Effectz Service

Tired of all that colored Coolant clogging up your loop but don't want to stick with some boring old clear coolant? Well Performance-PCs has you taken care of with their new Channelz Effectz Service! This service is a great way to add some color to your Channelz distribution plate without clogging your loop with pastel or mica filled coolants. We use an epoxy resin mixture that is safe for your loop and will certainly help that build POP. There is 30 different super vivid color options to choose from and we even added the ability for you to mix colors to give your loop its own style.

Features

Installation:

Remove the front Radiator Bracket and flip it around so that the concave side faces inward and secure it to the

first set of mounting points. Next take the 25mm screws and included washers and spacers, first place the washers onto the screws and place them through the inner side of the radiator bracket next take the black spacer and place them on the screws(Check pictures for example). With the screws in place take the distro plate and line it up with the mounting screws. Last tighten the screws into the distro so that it sits sturdy up next to the glass.

Specifications

Specifications:

Material: Clear Cast Acrylic.

Fasteners: Stainless Steel Silver.

Stand Offs: Brass.

Gaskets: Silicone Black.

O-rings: Silicone Black and Clear.

Stop Fittings: Brass Black Powder coat.

Ports: x7. Inlets: x3 Outlets: x. Fill: x1

LED Strip: DRGB 5V Addressable.

Dimensions: Width: 196mm. Height 320mm.

Included Items:

Channelz Fractal Design torrent Distribution Plate: x1.

DRGB LED Strip: x1.

Stop Plug: x1

Mounting Fasteners: M4 x 25mm buttonhead screw: x2.,M4 Washers: x2, Black Spacers: x2

Additional Information

Brand	PPCS
SKU	PPCS-DISTRO102
Weight	7.0000
Color	Clear
Reservoir Type	Distribution plate

