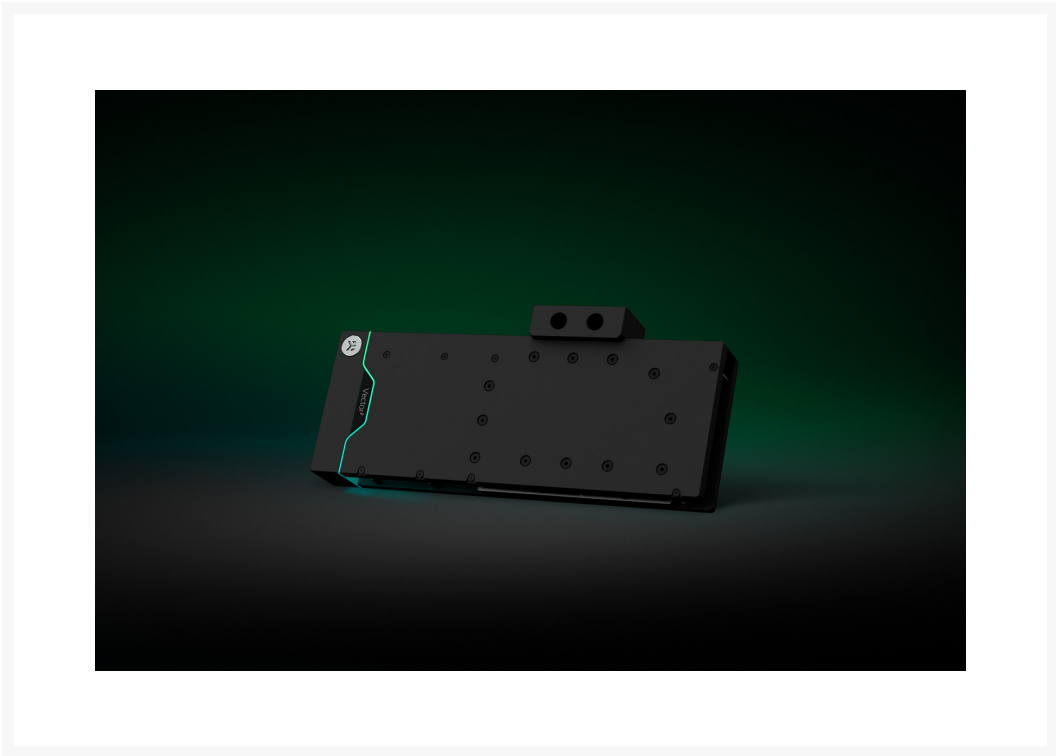


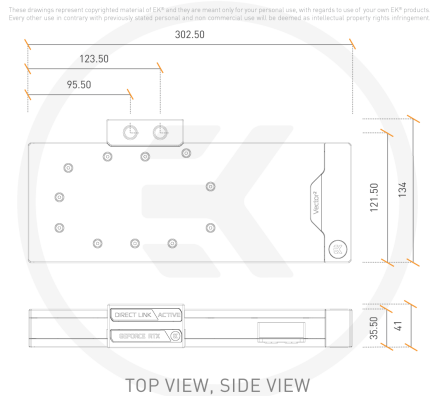
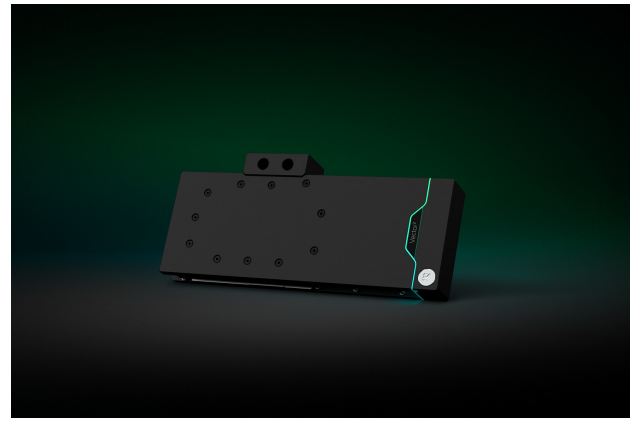
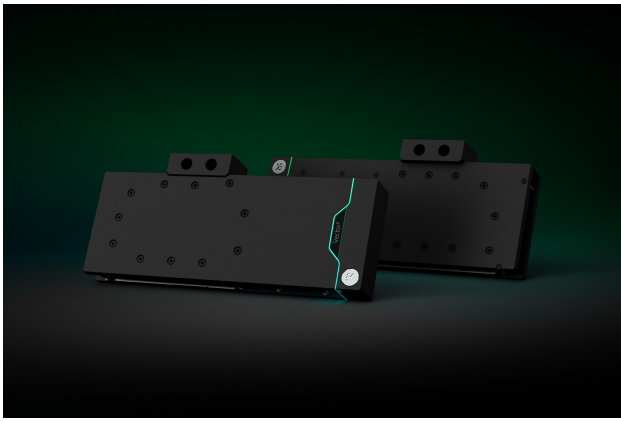


 **EK-Quantum Vector² XC3
RTX 3080/90 ABP D-RGB -
Nickel + Acetal**

Special Price
\$130.82 was
~~\$189.99~~

Product Images





Short Description

This product can only be installed with EK-Quantum Vector² XC3 RTX 3080/90 D-RGB - Nickel + Acetal

EK-Quantum Vector² XC3 RTX 3080/90 ABP D-RGB - Nickel + Acetal is an Active Backplate add-on for the EK-Quantum Vector² XC3 RTX 3080/90 D-RGB - Nickel + Acetal GPU water block. It is made to actively cool the backside of ASUS EVGA XC3 GeForce RTX™ 3080, 3080 Ti, and 3090 GPUs. As with the water block, when upgraded with an active backplate, the entire enclosure stays fully EK-Matrix7 compliant on every axis. This ensures ease of integration and alignment with all other EK-Matrix7 products.

Description

This product can only be installed with EK-Quantum Vector² XC3 RTX 3080/90 D-RGB - Nickel + Acetal

EK-Quantum Vector² XC3 RTX 3080/90 ABP D-RGB - Nickel + Acetal is an Active Backplate add-on for the EK-Quantum Vector² XC3 RTX 3080/90 D-RGB - Nickel + Acetal GPU water block. It is made to actively cool the backside of ASUS EVGA XC3 GeForce RTX™ 3080, 3080 Ti, and 3090 GPUs. As with the water block, when upgraded with an active backplate, the entire enclosure stays fully EK-Matrix7 compliant on every axis. This

ensures ease of integration and alignment with all other EK-Matrix7 products.

For a precise compatibility match of this water block, we recommend you refer to the EK Cooling Configurator.

Features

EK-Quantum Vector² XC3 RTX 3080/90 Active Backplate

The EK-Quantum Vector² XC3 RTX 3080/90 ABP comes with a new terminal that replaces the stock terminal arriving with the Vector² water block and links the water block and Vector Active Backplate into a single unit. This way, the whole enclosure requires only one inlet and one outlet, removing unnecessary additional tubing and reducing clutter. It is the ultimate aesthetic and performance solution that finds your GPU sandwiched between two water blocks, allowing maximum cooling.

What Does it Cool?

The Vector² Active Backplate directly cools the PCB hotspots that are found on the backside of the GPU core and the VRM (voltage regulation module). On the RTX 3090, the VRAM located on the backside is cooled, while the RTX 3080 gets cooling for the PCB located around the front-mounted VRAM. Cooling liquid is channeled over all these critical areas.

Innovative and Advanced Direct Link Flow Solution Allows Both Serial and Parallel Connections

These new Vector² Active Backplates feature a Direct Link flow solution - the first multiple block solution to implement a conventional 4-port terminal layout. That allows serial and parallel connections from adjacent or opposing sides of the block. It was made possible by the addition of a machined brass insert that diagonally links the water block directly to the active backplate inside the acetal terminal. Direct Link proves invaluable when incorporating an ABP with a standard distribution plate or vertical GPU mount.

Hidden Terminal Screws for the Ultimate Aesthetic

Tactile magnetic covers are used to conceal the terminal screws, which allows rotating the branding when the GPU is inverted in the case.

CNC-Machining and Premium Materials

The base of the active backplate is CNC-machined out of nickel-plated electrolytic copper, while its top is CNC-machined out of durable black Acetal. A black-anodized aluminum side cover is included with every active backplate to conceal the entire PCB and create a seamless enclosure.

D-RGB lighting on EK-Quantum Vector² XC3 RTX 3080/90 ABP D-RGB

A dense D-RGB LED strip illuminates the parting line of the stand-out element on both sides of the block. This subtle effect allows vivid displays of color while the block remains entirely black. The individually addressable RGB LED is compatible with popular RGB sync technologies from all major motherboard manufacturers. The arrow marking on the 3-pin D-RGB LED connector is to be aligned with the +5V marking on the D-RGB (addressable) header.

Specifications

Warning:

- EK only guarantees compatibility with included EK-brand thermal pads. Installation process, cooling performance, and block contacts are tested exclusively with EK-brand thermal pads.
- Listed thermal pad thicknesses apply only to EK thermal pads which are included in the package.
- EK does not guarantee compatibility with aftermarket alternatives for thermal interface material.
- Requires EK-Quantum Vector² XC3 RTX 3080/90 D-RGB - Nickel + Acetal to operate properly. Nickel + Plexi variant of this block is not compatible due to LED implementation.

Enclosed:

- EK-Quantum Vector² XC3 RTX 3080/90 ABP D-RGB - Nickel + Acetal
- Necessary mounting screws, nuts, and washers
- EK-Loop Multi Allen Key (6mm, 8mm, 9mm)
- Thermal pads

Technical Specification:

- Dimensions: (LxHxW): 302,5 x 134 x 41mm
- D-RGB LED count: 28
- D-RGB cable length: 50cm
- D-RGB connector 3-pin 5V digital LED header (Pinout: +5V | Digital | Blocked | Ground)

Made in Slovenia - Europe!

PLEASE NOTE:

- This block is made for EVGA XC3 3080, 3080 Ti, and 3090 cards. It is not a stand-alone unit and requires an EK-Quantum Vector² XC3 RTX 3080/90 D-RGB Nickel + Acetal water block to pair with. Nickel + Plexi variant of the same water block is not compatible due to LED implementation.
- Due to the immense variety of fittings/barbs available on the market, we guarantee compatibility only with EK fittings.
- This product should NOT be installed with any aluminum Fluid Gaming parts!
- The use of specifically engineered coolants that contain corrosion, scale, and biological inhibitors is mandatory to prevent damage to your nickel plated water block! EK is offering a selection of such products in the coolants section.
- Make sure that there is enough clearance for the Active Backplate to fit above the PCIe slot. This Active Backplate requires 15mm clearance above the center of the PCIe slot.

Additional Info

Nickel Acetal

G1/4

Nvidia GeForce

Additional Information

Brand	EK Waterblocks
SKU	EK-QTM-VEC2-XC3-3080-90-ABP-NA-D
Weight	3.5000
Color	Black
Vga	EVGA® XC3 RTX 3080 and 3090
Block GPU Type	Nvidia
Block Style	Nickel-Acetal
Vendor SKU/EAN	3831109892275
Special Price	\$130.82

